

### Funny River Community Wildfire Protection Plan Area Hazard Rating

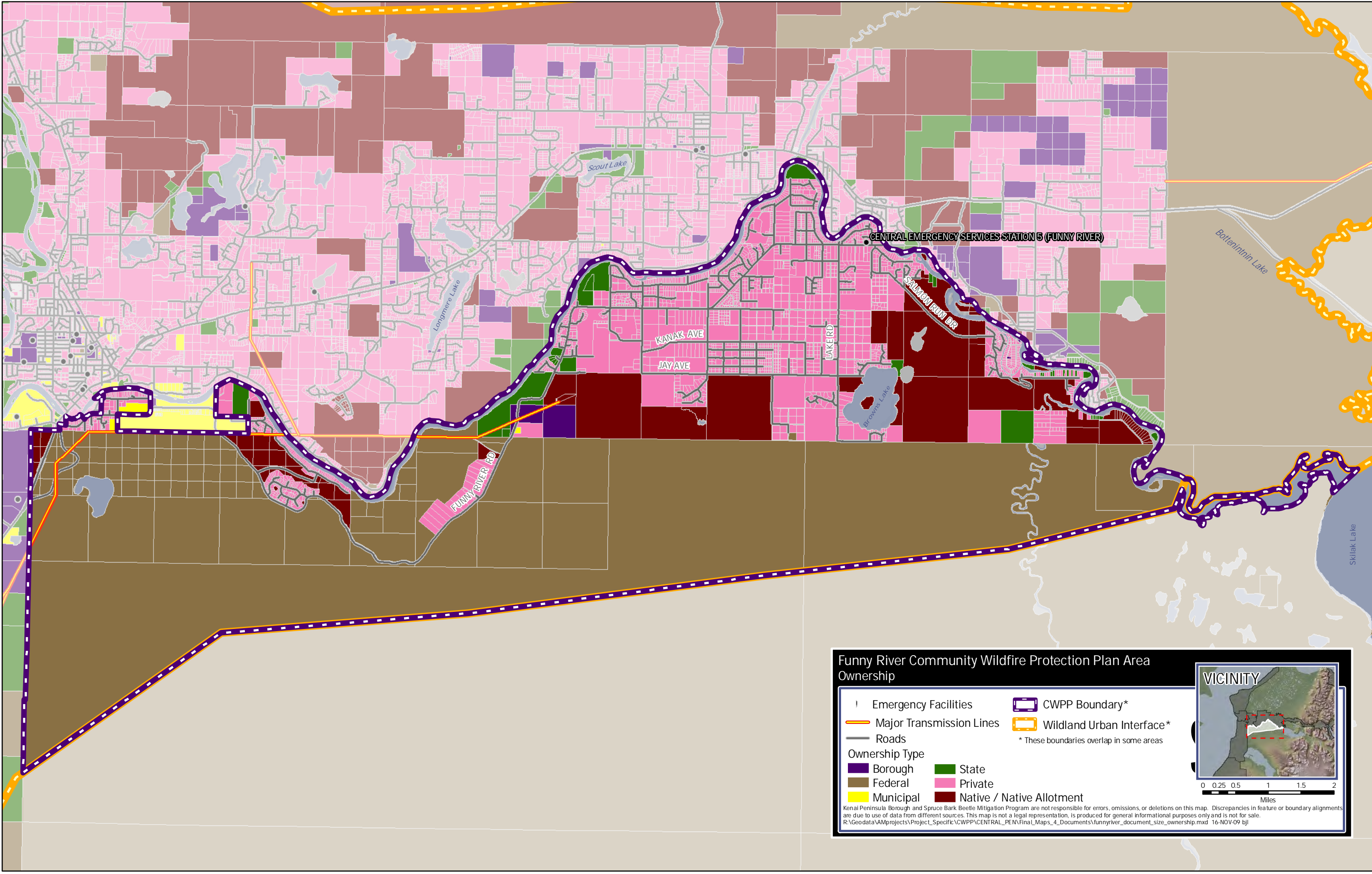
Community Wildfire Protection Plan Boundary	Moderate	Roads
Water	High	Firestarts*
No Hazard / No Data	Extreme	Human-caused
Very Low		Lightning-caused
Low		

\*Accurate to the nearest quarter section

0 0.25 0.5 1 1.5 2  
Miles

Kenai Peninsula Borough and Spruce Bark Beetle Mitigation Program are not responsible for errors, omissions, or deletions on this map. Discrepancies in feature or boundary alignments are due to use of data from different sources. This map is not a legal representation, is produced for general informational purposes only and is not for sale.  
R:\Geodata\AM\projects\Project\_Specific\CWPP\CENTRAL\_PEN\Final\_Maps\_4\_Documents\funnyriver\_document\_size\_hazard.mxd 09-JUL-08 bjl





**Funny River Community Wildfire Protection Plan Area**  
**Ownership**

! Emergency Facilities	CWPP Boundary*
Major Transmission Lines	Wildland Urban Interface*
Roads	

\* These boundaries overlap in some areas

**Ownership Type**

Borough	State
Federal	Private
Municipal	Native / Native Allotment

Kenai Peninsula Borough and Spruce Bark Beetle Mitigation Program are not responsible for errors, omissions, or deletions on this map. Discrepancies in feature or boundary alignments are due to use of data from different sources. This map is not a legal representation, is produced for general informational purposes only and is not for sale.  
R:\Geodata\AM\projects\Project\_Specific\CWPP\CENTRAL\_PEN\Final\_Maps\_4\_Documents\funnyriver\_document\_size\_ownership.mxd 16-NOV-09 bjl

**VICINITY**

0 0.25 0.5 1 1.5 2  
Miles