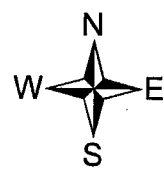
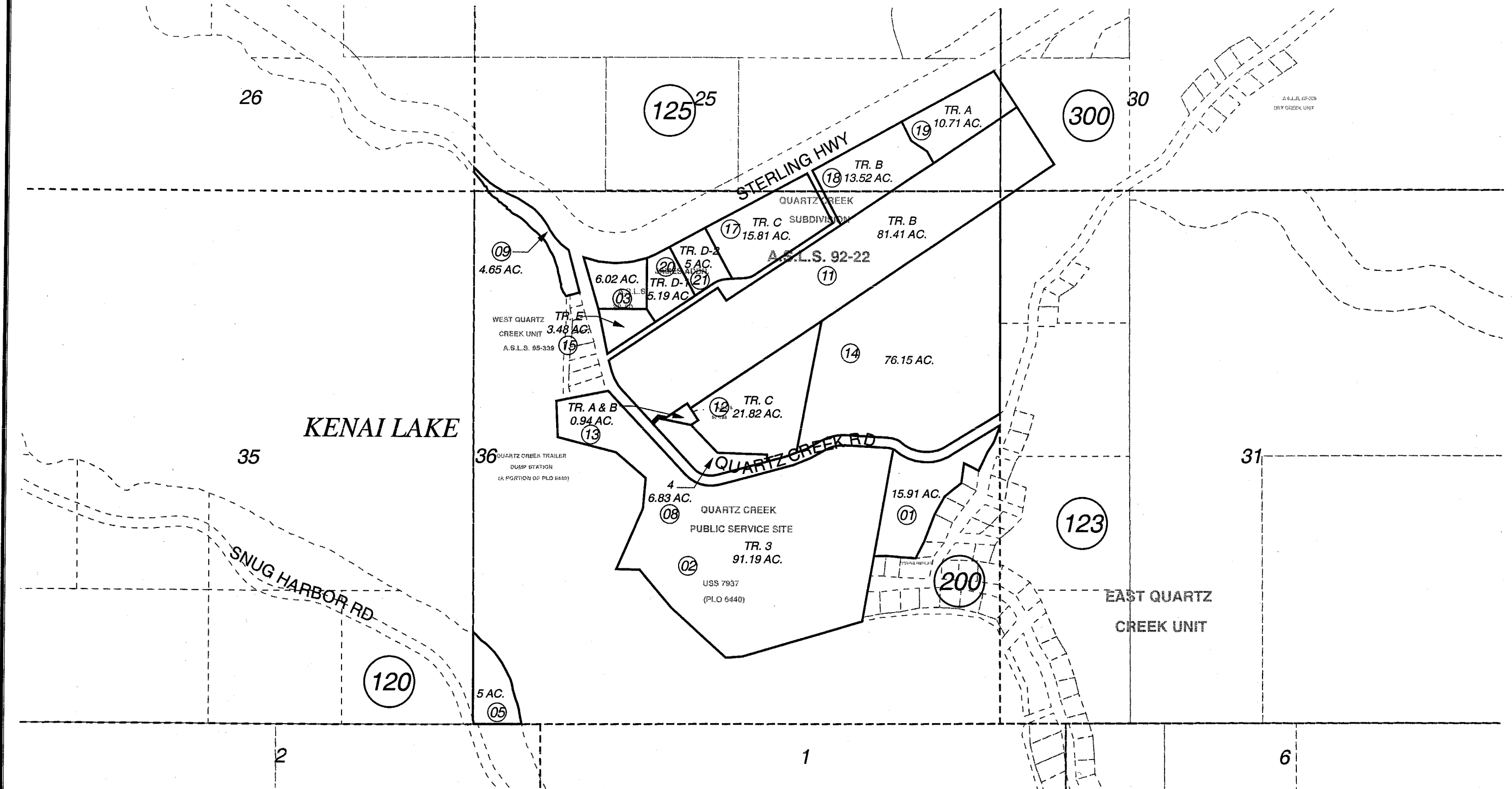


POR. SEC. 36, T05N, R03W, S.M.

119-124



FEBRUARY 16, 2006

For 2006 assessment roll		
Delete	Add	Revise
To		
9		
(ACREAGE CHANGE)		

Assessor's Map
Kenai Peninsula Borough

US SURVEY 7937 SW0007937
 ALASKA STATE LAND SURVEY 88-30 AMENDED SW0890025
 ALASKA STATE LAND SURVEY 92-22 SW0930008
 ALASKA STATE LAND SURVEY 92-138 SW0930010
 QUARTZ CREEK SUB SW0940011
 QUARTZ CREEK SUB JAMES ADDN SW2005014

This map is prepared for Kenai Peninsula Borough Assessing Dept. use only and is not intended for conveyance nor is it a survey.
 Note- Assessor's block Numbers Shown in Ellipses
 Assessor's Parcel Numbers Shown in Circles