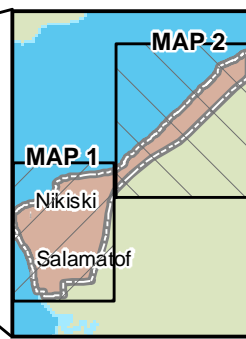
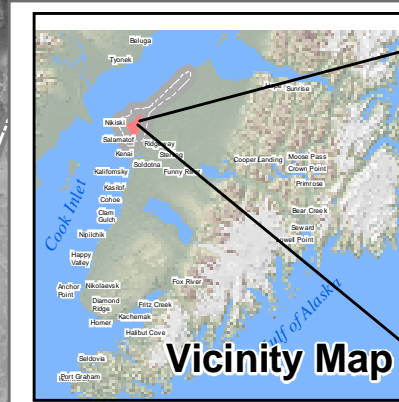
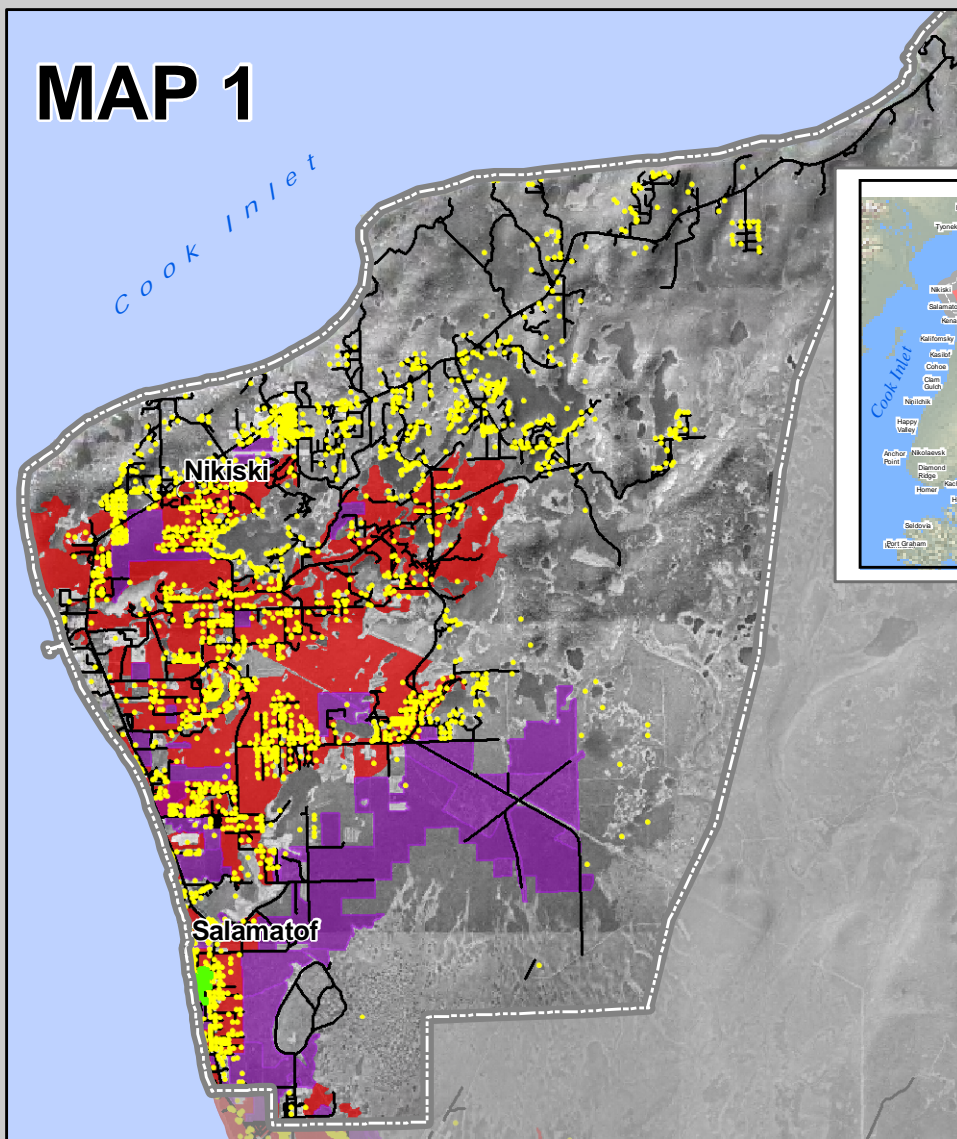
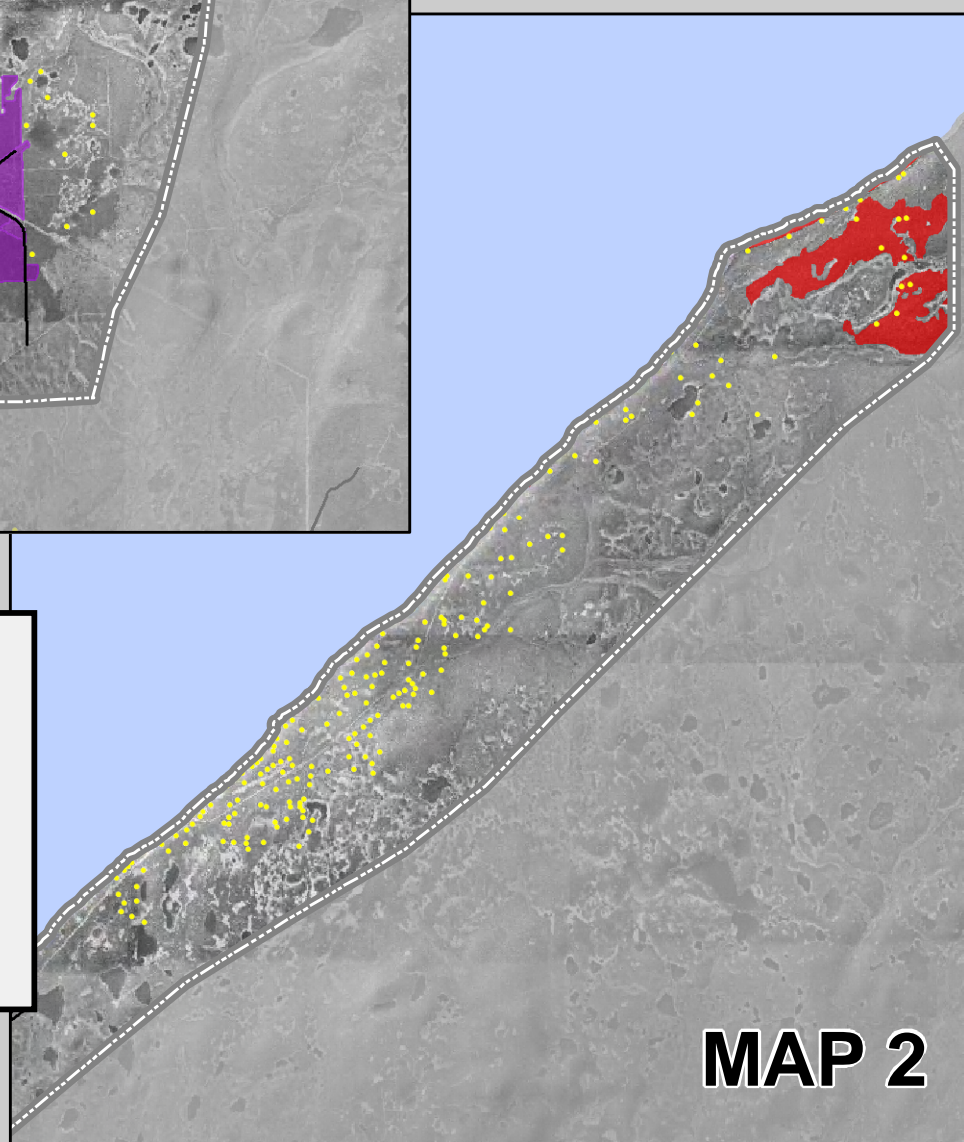


# MAP 1



## Legend

- Parcels with Structures
- CWPP Boundary
- Beetle-killed Spruce
- Fuel Harvest (7000 Acres)
- Evacuation Route Treatment (1 Mile of Road Frontage)



# MAP 2

## Mitigation Efforts NIKISKI AREA



Kenai Peninsula Borough (KPB), Spruce Bark Beetle Mitigation Program (SBBMP) are not responsible for errors, omissions, or deletions on this map. Discrepancies in feature or boundary alignments are due to use of data from different sources. This map is not a legal representation, is produced for general informational purposes only and is not for sale. Mitigation acreages are presented to the nearest 100 acres, evacuation routes to the nearest 1 mile.  
 M:\Projects\COMMUNITY\_RISK\Mitigation\_Maps\NIKISKI\_CWPP\_MITIGATION.mxd Completed by Bobbi Jo Lay & Marv Rude with support from Alaska Map Company  
 27 FEB 2006

