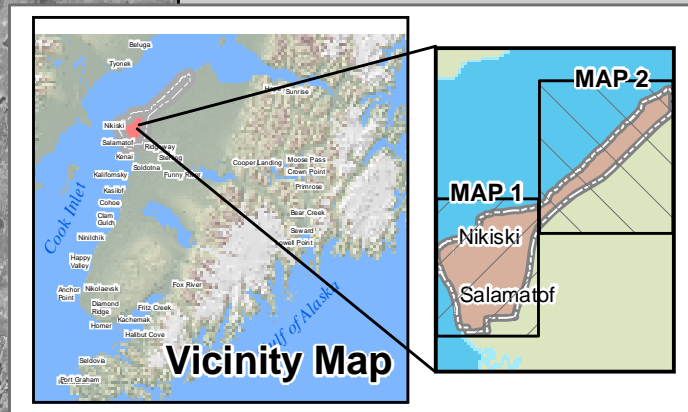
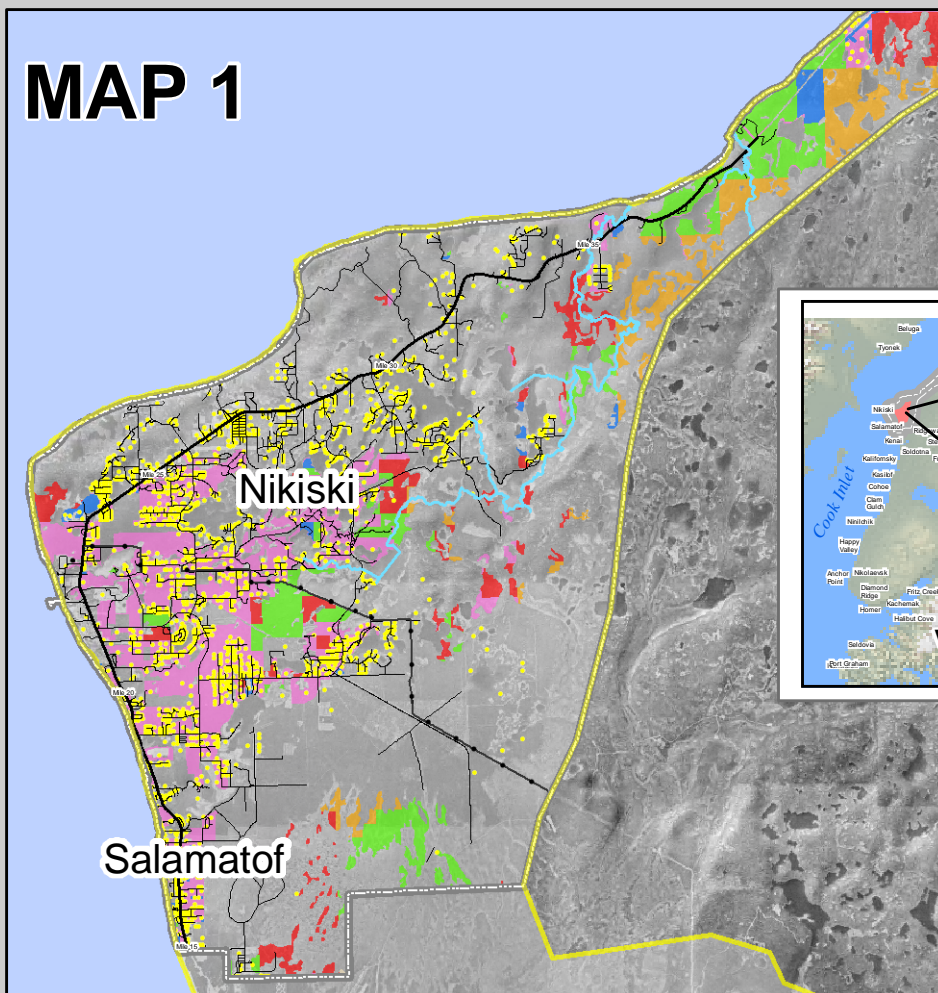
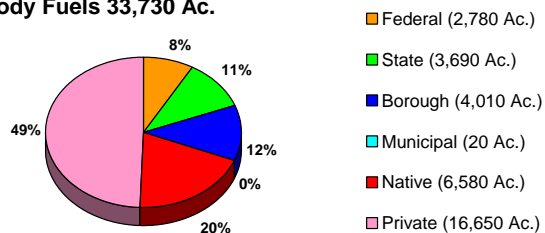


MAP 1



NIKISKI

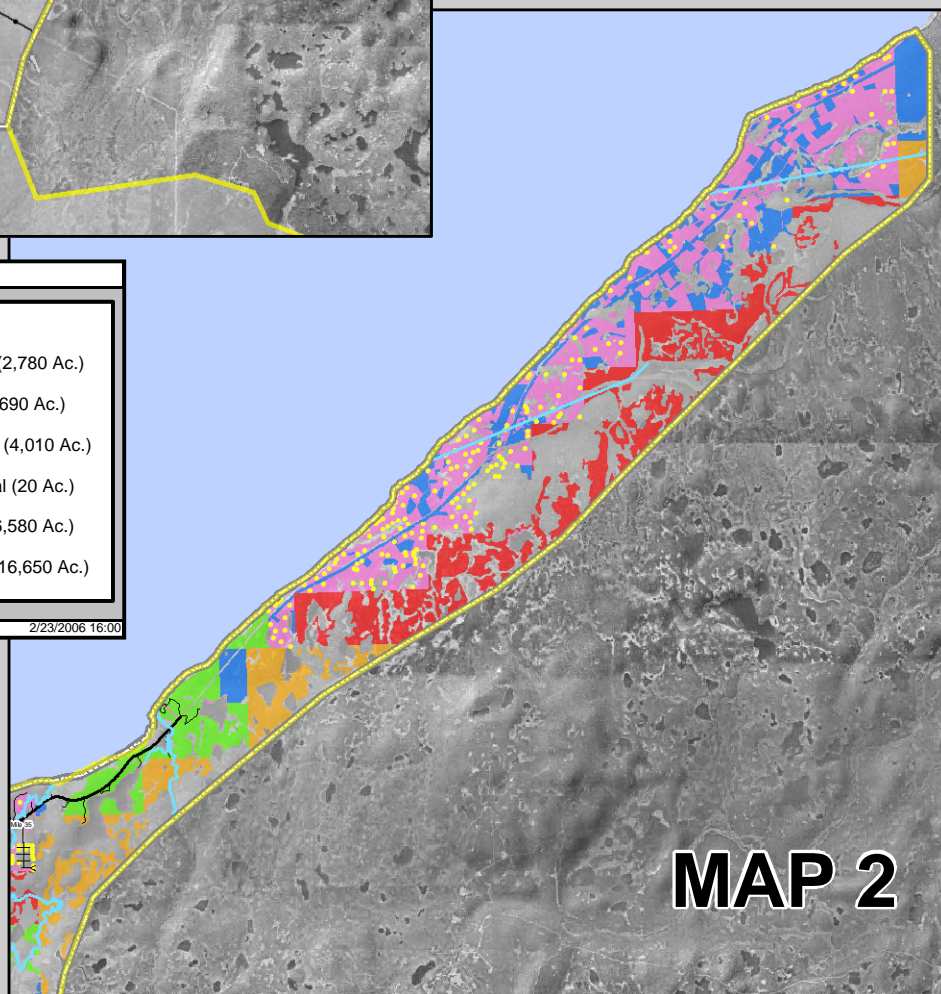
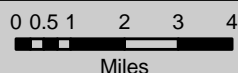
Ownership of Extreme and High Hazard Woody Fuels 33,730 Ac.



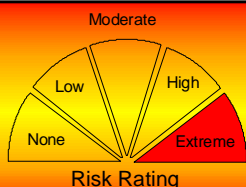
2/23/2006 16:00

Fuel Map Legend

- Community Wildfire Protection Plan Boundary
- Main Highway (24 Miles)
- Secondary Road (258 Miles)
- Powerlines (11 Miles)
- Anadromous Streams (35 Miles)
- Parcels with Structures
- Wildland Urban Interface



MAP 2



Community Fuel Ownership and Wildland/Urban Interface Map

NIKISKI / SALAMATOF

Kenai Peninsula Borough (KPB) - Spruce Bark Beetle Mitigation Program (SBBMP) KPB or SBBMP are not responsible for errors, omissions, or deletions on this map. Discrepancies in feature or boundary alignments are due to use of data from different sources. This map is not a legal representation, is produced for general informational purposes only and is not for sale.

Path: M:\projects\COMMUNITY_RISK\FuelMap\COMMUNITY_FO_nikiski.mxd By: David Haynes & Marvin Rude

