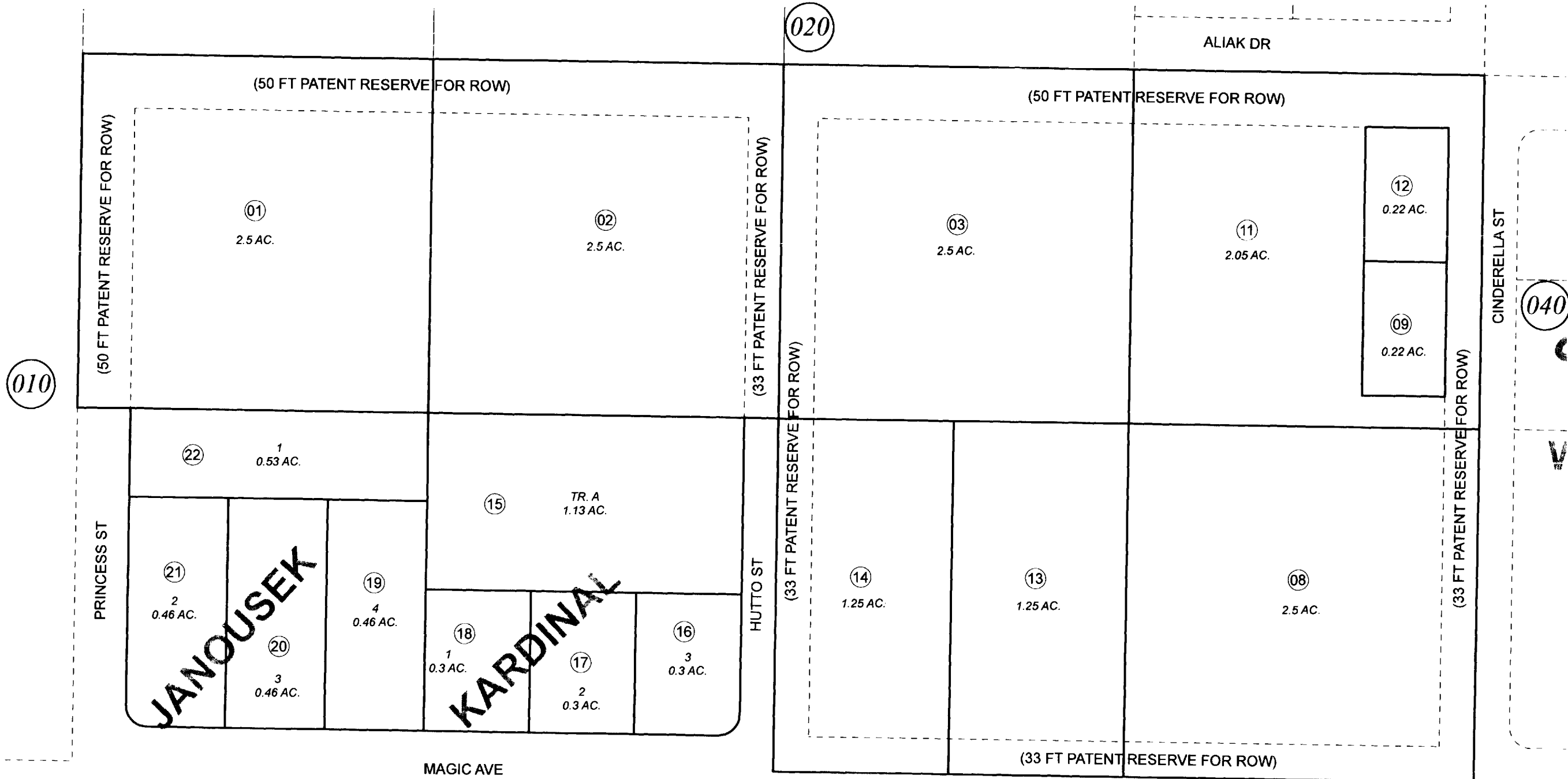


POR. SEC. 33, T06N, R11W, S.M.

045-030



MARCH 30, 2011

For 2010 assessment roll		
Delete	Add	Revise
To		
REVERTING 09 & 11 TO ORIGINAL		

Assessor's Map
Kenai Peninsula Borough

KARDINAL SUB KN0760060
JANOUSEK SUB KN0850163

This map is prepared for Kenai Peninsula Borough Assessing Dept. use only and is not intended for conveyance nor is it a survey.
Note- Assessor's block Numbers Shown in Elipses
Assessor's Parcel Numbers Shown in Circles