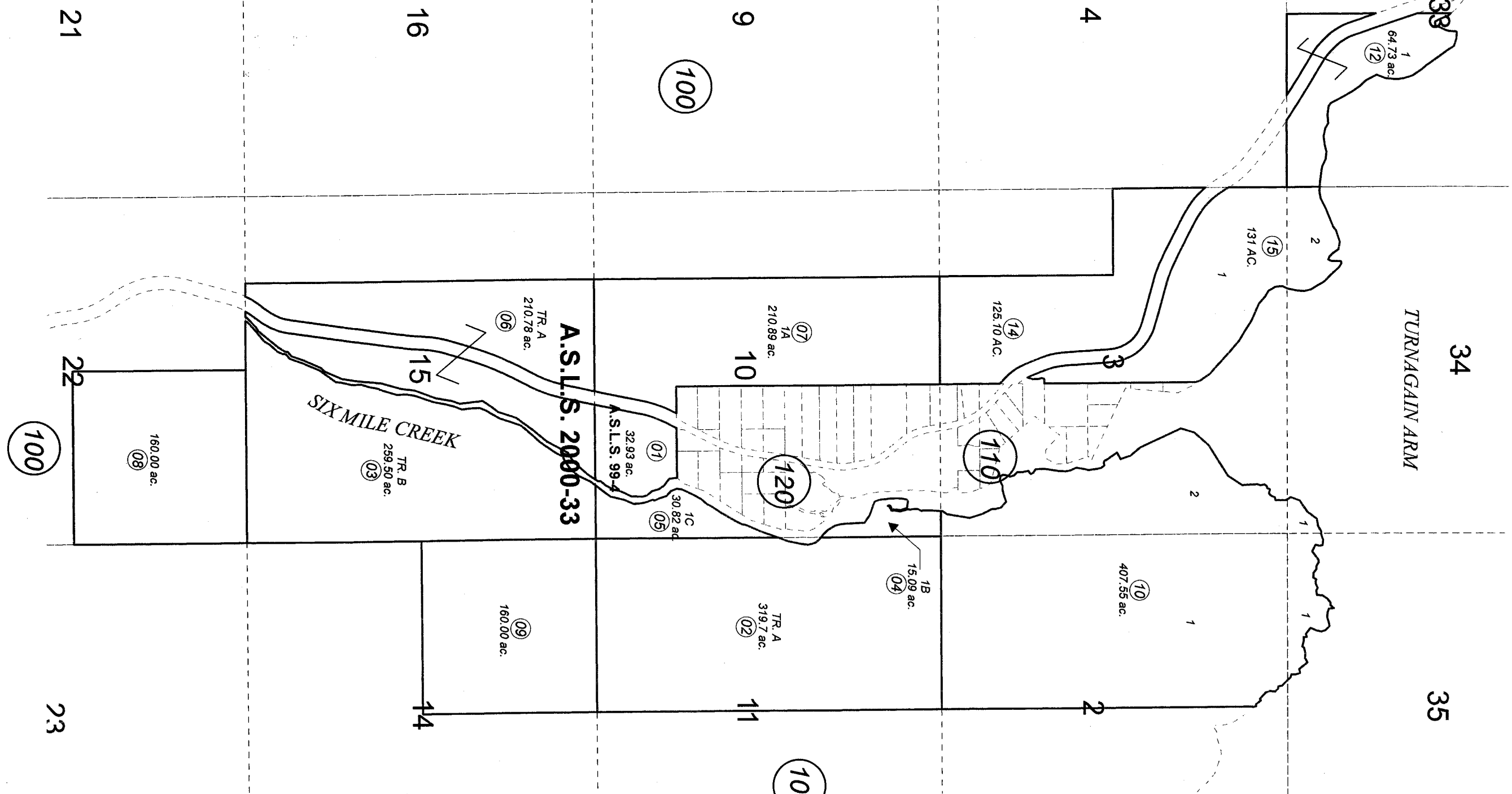


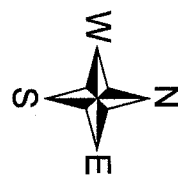
POR. SEC. 33-35, T10N, R01W &
 SEC. 2,3,10,11,14,15,22, T09N, R01W, S.M.

035-121



JULY 22, 2008

For 2009 assessment roll		
Delete	Add	Revise
To		
13	15	



Assessor's Map
 Kenai Peninsula Borough

ALASKA STATE LAND SURVEY NO 99-4 SW2000009
 ALASKA STATE LAND SURVEY NO 2000-33 SW2001006
 SIXMILE CREEK SUB HOLLOWAY ADDN SW2008008

Note- Assessor's block Numbers Shown in Ellipses
 Assessor's Parcel Numbers Shown in Circles

This map is prepared for Kenai Peninsula Borough Assessing Dept. use only and is not intended for conveyance nor is it a survey.