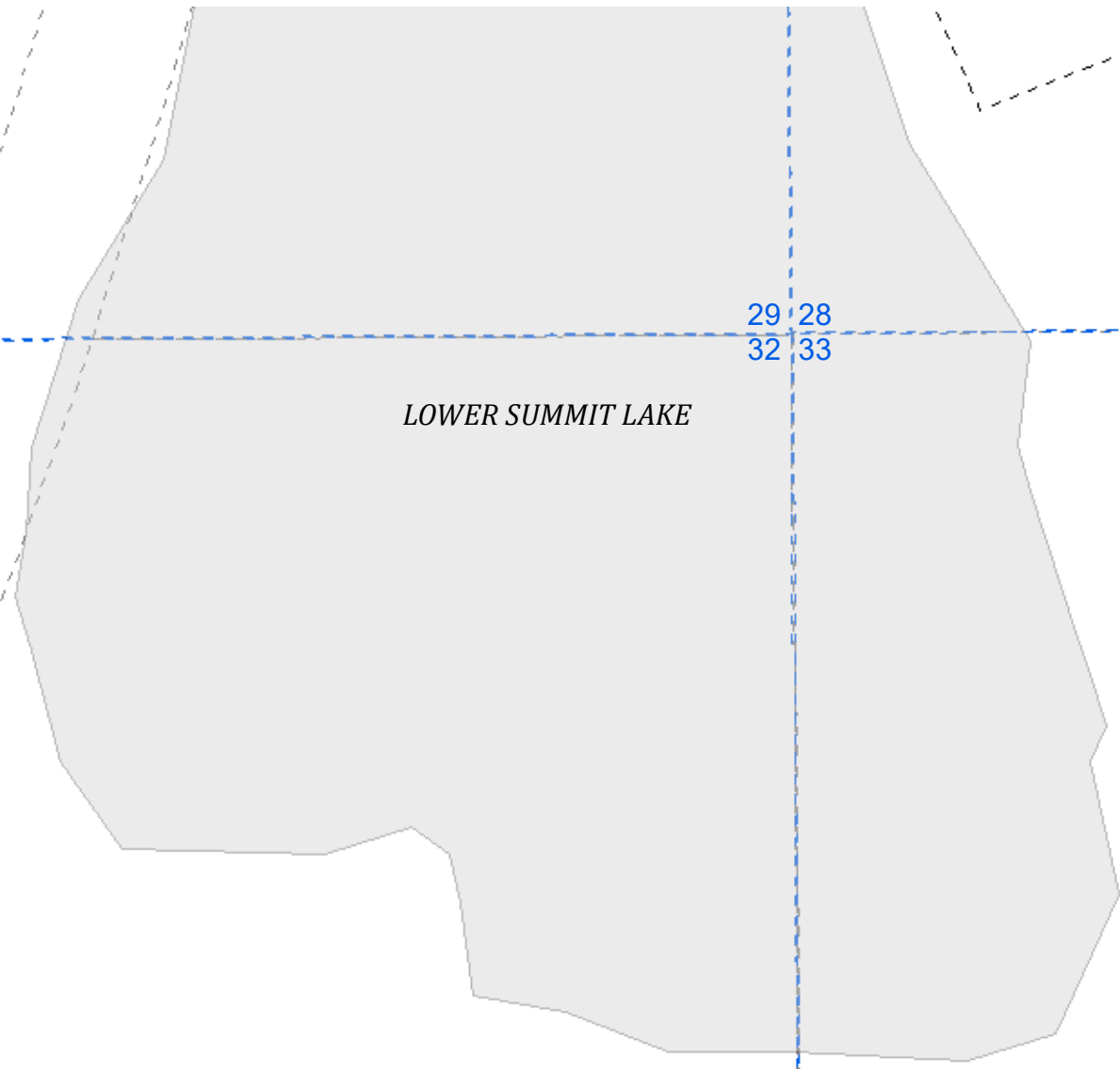
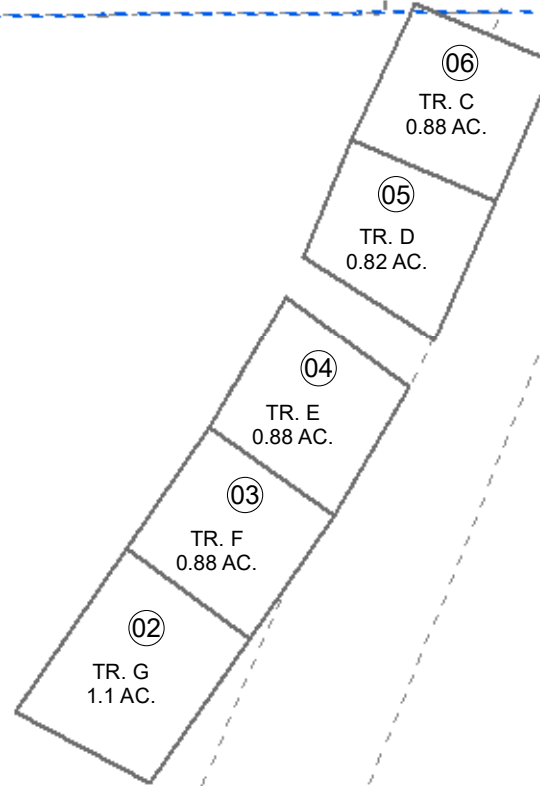


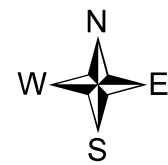
POR. SEC. 32, T07N, R01W, S.M.

035-210

BK
180



BK
180



0 50 100 200 Feet

MAY 25, 2021

For 2022 assessment roll		
Delete	Add	Revise
To		
01		

Assessor's Map
Kenai Peninsula Borough

ALASKA STATE LAND SURVEY 99-24 SW2000005

This map is prepared for Kenai Peninsula Borough Assessing Dept. use only and is not intended for conveyance nor is it a survey.

Note- Assessor's block Numbers Shown in Elipses
Assessor's Parcel Numbers Shown in Circles