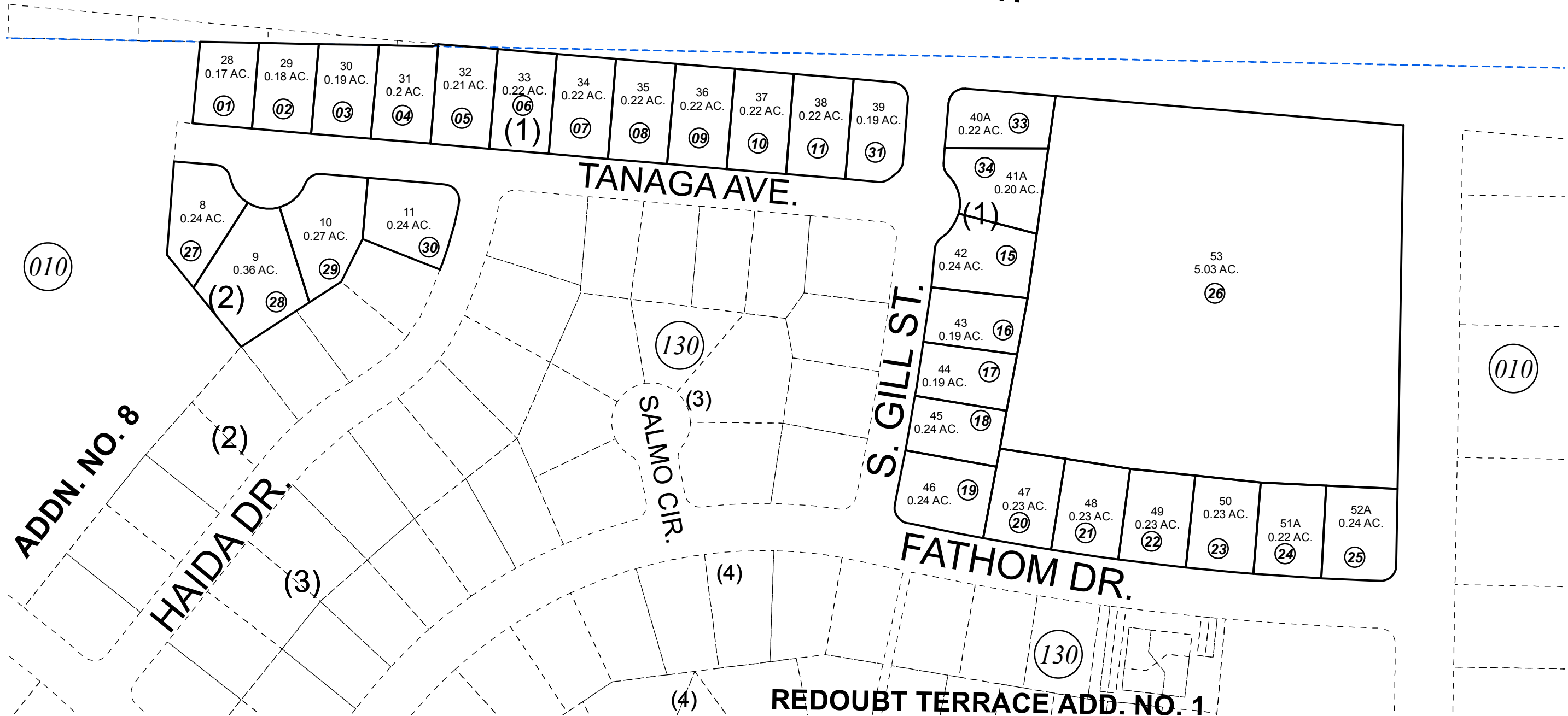


KENAI SPUR HWY.



JUNE 12, 2017

For 2018 assessment roll		
Delete	Add	Revise
	To	
14,32	33,34	



0 25 50 100 Feet

Assessor's Map
Kenai Peninsula Borough

KN0001474 REDOUBT TERRACE SUB
 KN0770170 REDOUBT TERRACE SUB REPLAT OF LOTS 39 & 40 BLOCK 1
 KN0890054 REDOUBT TERRACE SUB REPLAT OF LOTS 51 & 52 BLOCK 1
 KN2017026 REDOUBT TERRACE SUB 2016 REPLAT

Note- Assessor's block Numbers Shown in Ellipses
 Assessor's Parcel Numbers Shown in Circles

This map is prepared for Kenai Peninsula Borough Assessing Dept. use only and is not intended for conveyance nor is it a survey.