

POR. SE1/4 SE1/4 SEC. 15, T07N, R12W, S.M.

014-182

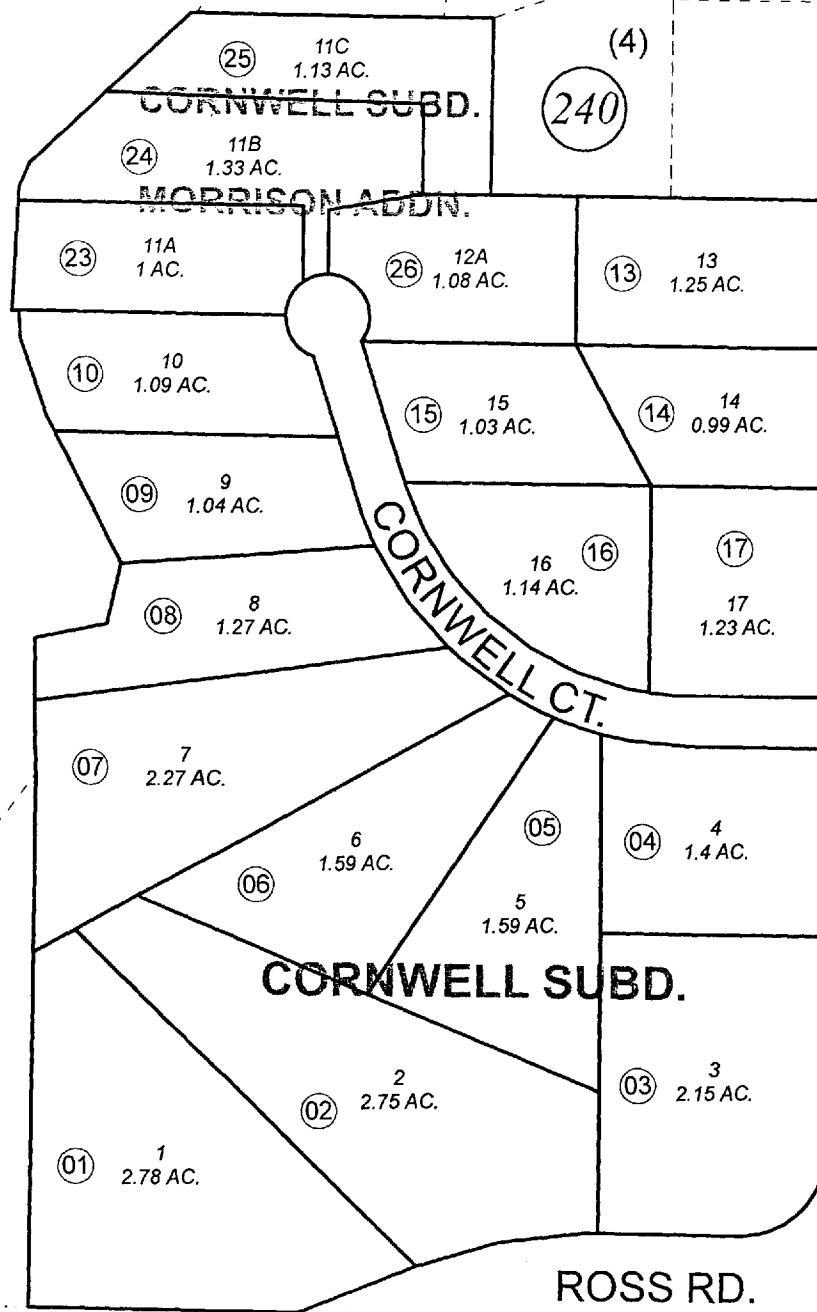
*Bernice
Lake*

ROSS POINT
SUBDIVISION

ROSS POINT CT.

JOLENE LOOP

WINDAMERE AVE.
SUBD.

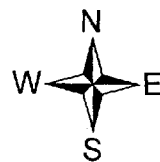


WINDY RD.

GIBSON ADD'N.

ROSS RD.

15 14
22 23



JANUARY 14, 2010

| For 2010 assessment roll | | |
|---------------------------|----------|--------|
| Delete | Add | Revise |
| To | | |
| 18026, 18211, 18212 | 18223-26 | |

Assessor's Map
Kenai Peninsula Borough

CORNWELL SUB KN0970032
CORNWELL SUB MORRISON ADDN KN2009100

This map is prepared
for Kenai Peninsula
Borough Assessing Dept.
use only and is not
intended for conveyance
nor is it a survey.

Note- Assessor's block Numbers Shown in Ellipses
Assessor's Parcel Numbers Shown in Circles