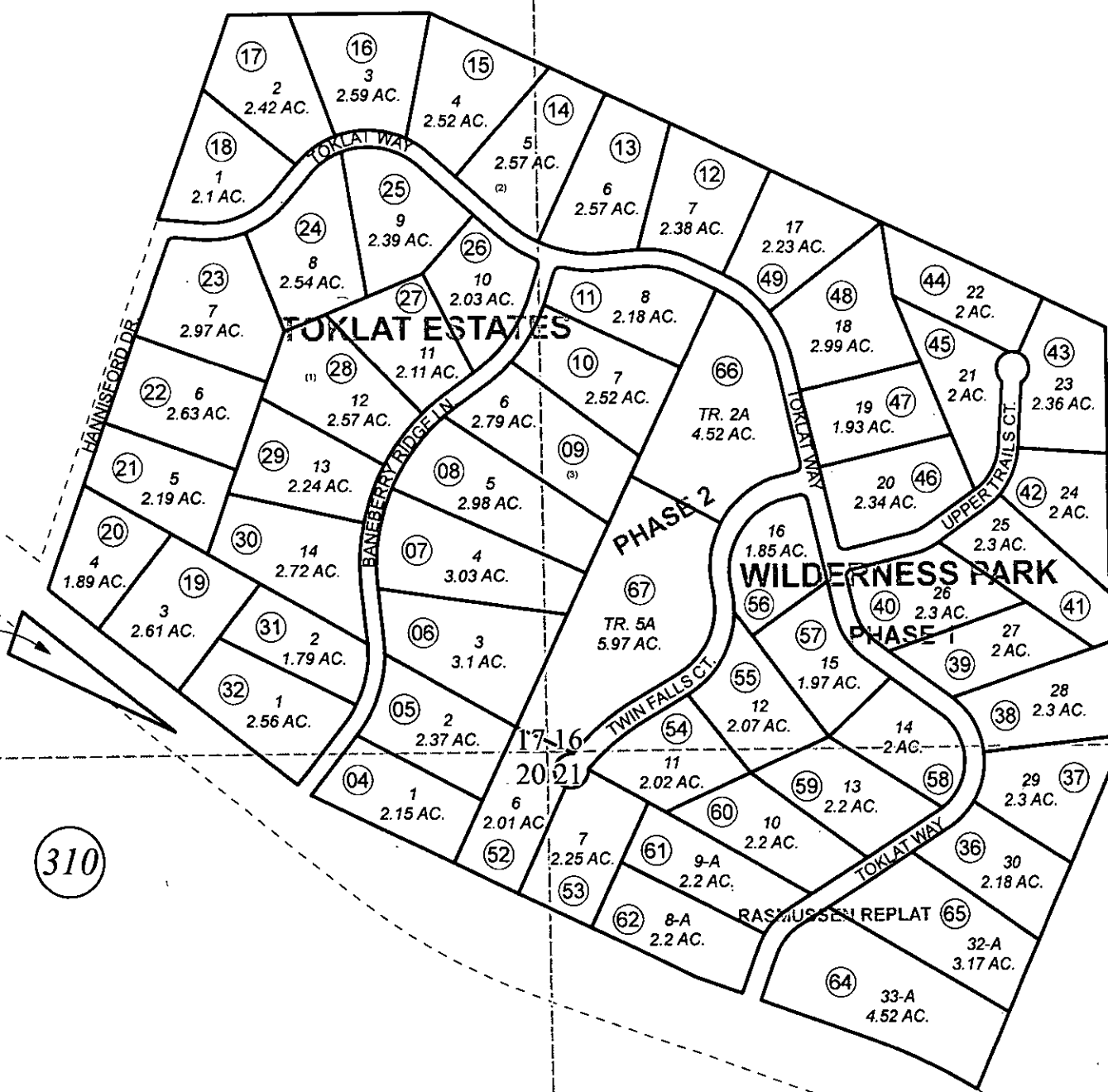


310



33
TR. A
0.82 AC.

SEWARD HWY



0 125 250 500 Feet

MARCH 20, 2011

For 2012 assessment roll		
Delete	Add	Revise
To		
50,51	66,67	

Assessor's Map
Kenai Peninsula Borough

US SURVEY 1090 SW0760007
 TOKLAT ESTATES SUB SW0770002
 WILDERNESS PARK SUB PHASE ONE SW0870015
 WILDERNESS PARK SUB RASMUSSEN REPLAT SW0880008
 WILDERNESS PARK PHASE TWO SW2011002

This map is prepared for Kenai Peninsula Borough Assessing Dept. use only and is not intended for conveyance nor is it a survey.
 Note- Assessor's block Numbers Shown in Ellipses
 Assessor's Parcel Numbers Shown in Circles