

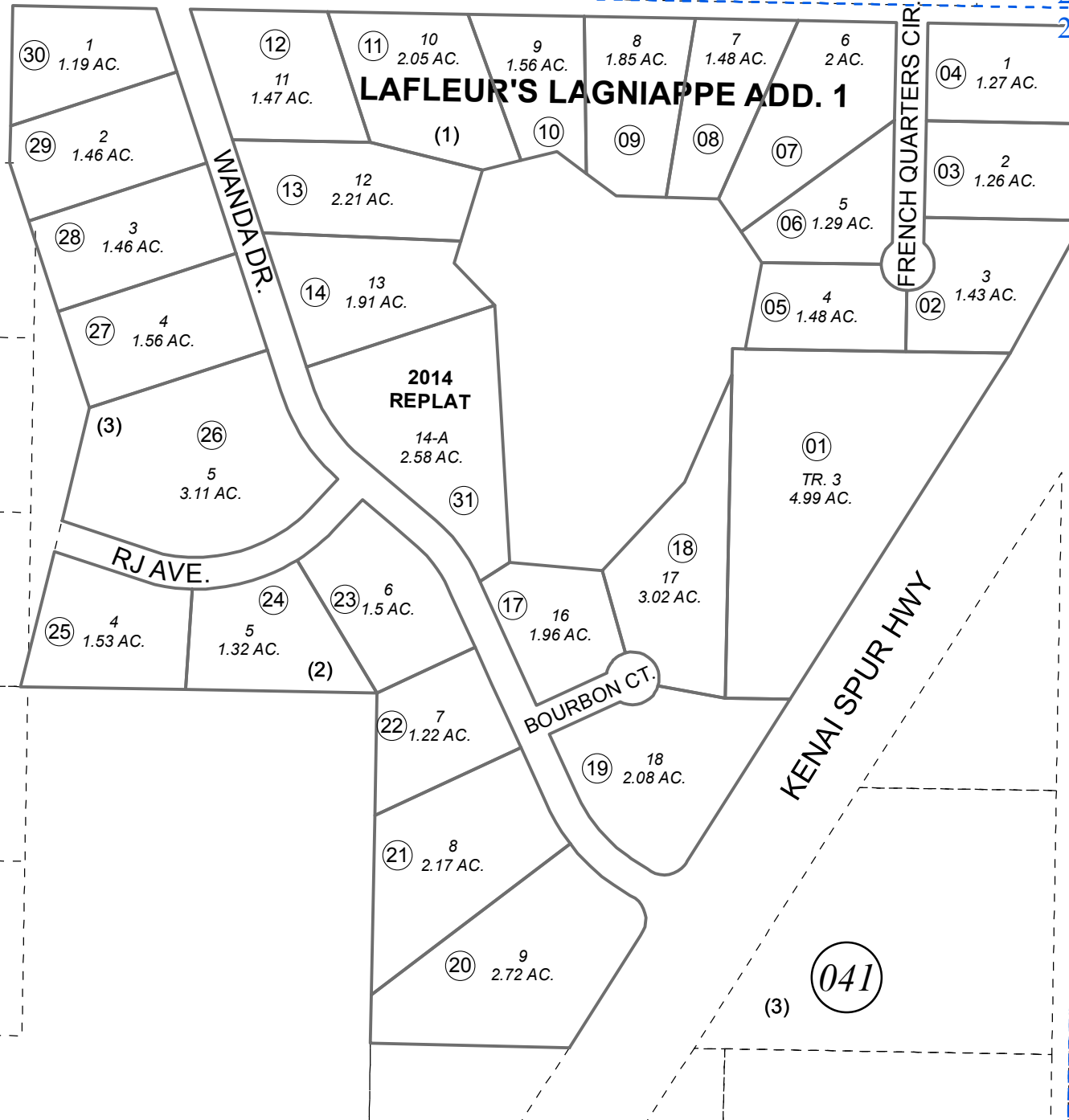
POR. NE1/4, SEC. 27, T08N, R11W, S.M.

013-470

021

NEW ORLEANS AVE.

22, 23
27, 26



041

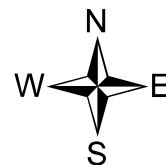
043

041

NOVEMBER 21, 2014

For 2015 assessment roll

Delete	Add	Revise
	To	
15,16	31	



0 100 200 400 Feet

Assessor's Map
Kenai Peninsula Borough

LAFLEUR'S LAGNIAPPE SUB KN0760056
 LAFLEUR'S LAGNIAPPE SUB ADDN NO 1 & REPLAT
 TRACTS 1, 2 & 4 BLOCK 1 & TR 1 BLOCK 2 KN0790086
 LAFLEUR'S LAGNIAPPE 2014 REPLAT KN2014081

Note- Assessor's block Numbers Shown in Elipses
 Assessor's Parcel Numbers Shown in Circles

This map is prepared
 for Kenai Peninsula
 Borough Assessing Dept.
 use only and is not
 intended for conveyance
 nor is it a survey.