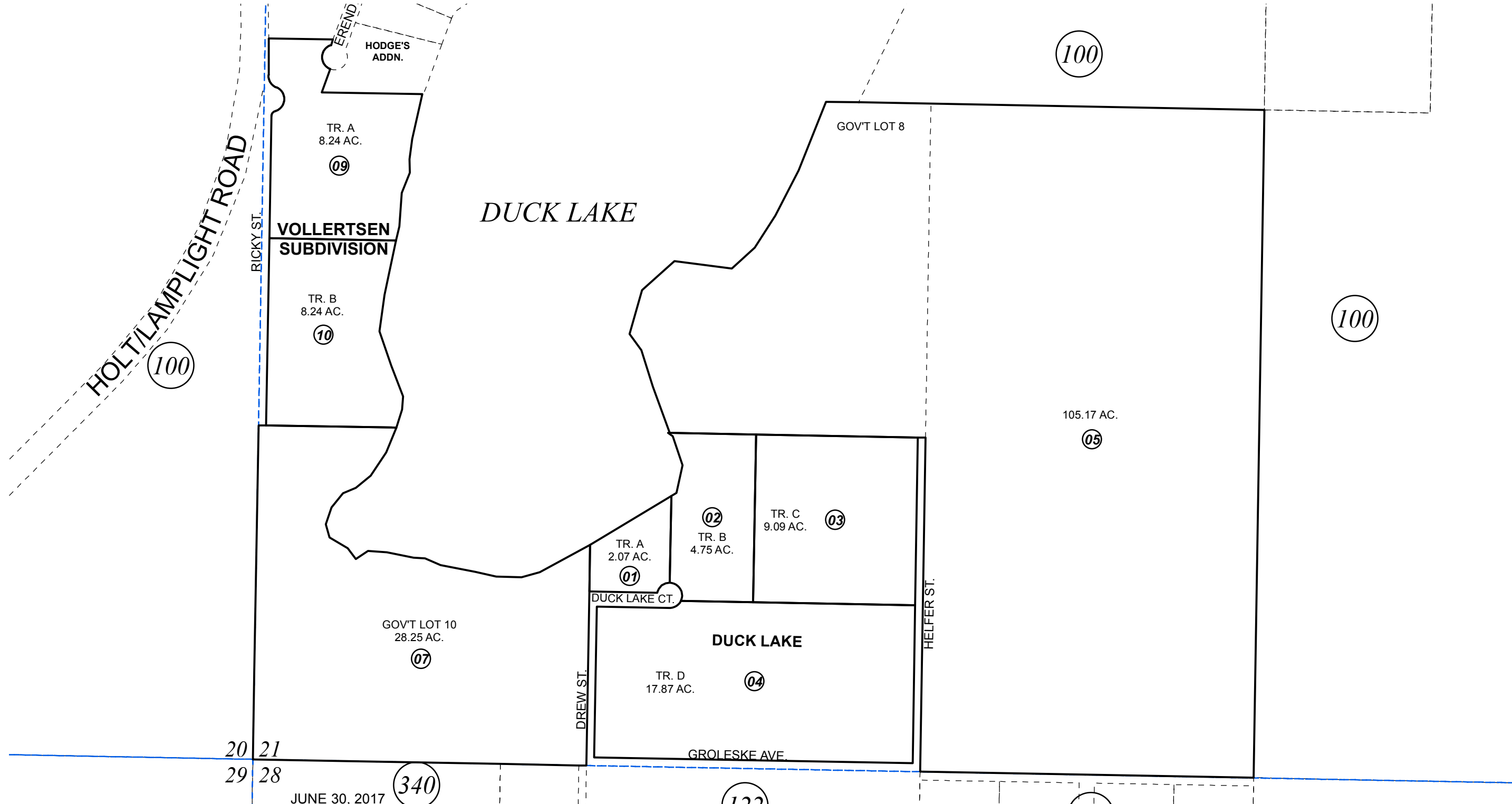


GOV. LOTS 8,9,10,11 & W1/2 SE1/4 SEC. 21, T07N, R11W, S.M.

013-103



20 21
29 28

JUNE 30, 2017 (340)

For 2018 assessment roll		
Delete	Add	Revise
To		
08	09,10	
58001		



0 95 190 380 Feet

Assessor's Map
Kenai Peninsula Borough

DUCK LAKE SUB KN0840326
VOLLERTSEN SUB KN2017028

This map is prepared for Kenai Peninsula Borough Assessing Dept. use only and is not intended for conveyance nor is it a survey.
Note- Assessor's block Numbers Shown in Elipses
Assessor's Parcel Numbers Shown in Circles