

LOT 30 BINKLEY SUBD. AND LOT C-1 RALPH SOBERG POPERTY  
STENGA BROS. ADDN. (AKA BIRCH LANE TRAILER PARK)

060-101

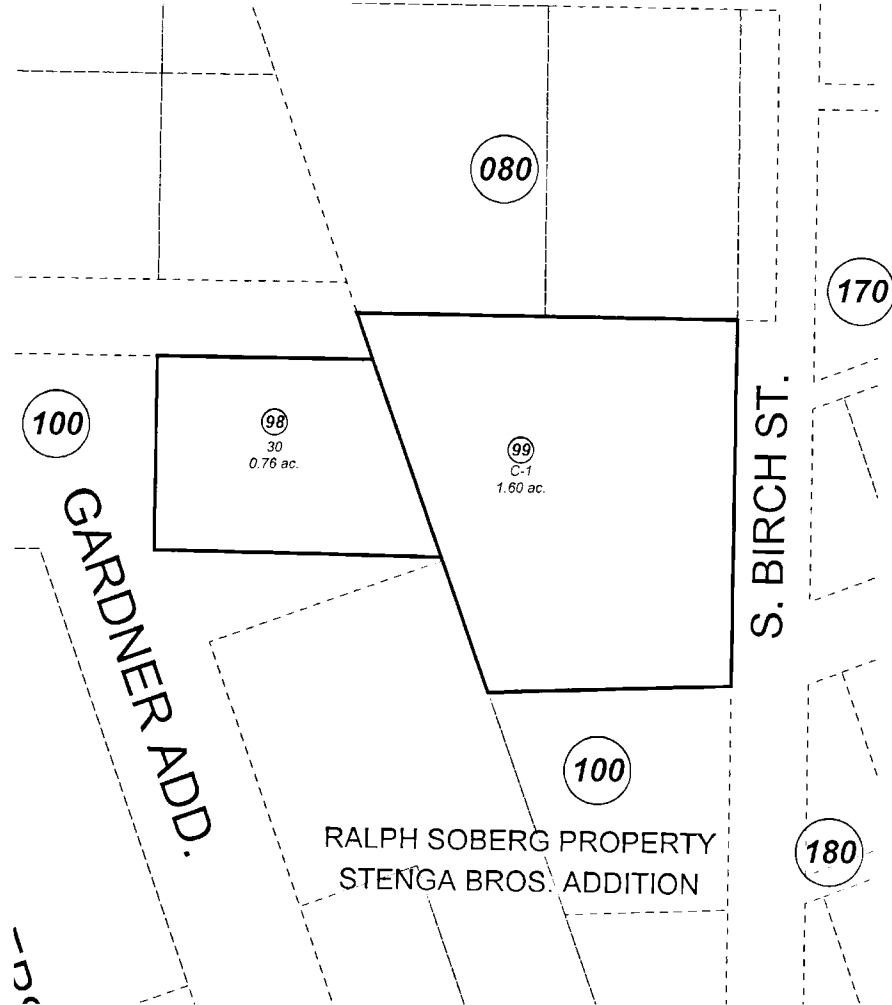
- ① SPACE 01
- ② SPACE 02
- ③ SPACE 03
- ④ SPACE 04
- ⑤ SPACE 05
- ⑥ SPACE 06
- ⑦ SPACE 07
- ⑧ SPACE 08
- ⑨ SPACE 09
- ⑩ SPACE 10
- ⑪ SPACE 11
- ⑫ SPACE 12
- ⑬ SPACE 13
- ⑭ SPACE 14
- ⑮ SPACE 15
- ⑯ SPACE 16



JANUARY 17, 2002

For 2002 assessment roll		
Delete	Add	Revise
	98	99
	(LEGAL CHANGE)	

Assessor's Map  
Kenai Peninsula Borough



This map is prepared for Kenai Peninsula Borough Assessing Dept. use only and is not intended for conveyance nor is it a survey.

Note- Assessor's block Numbers Shown in Ellipses  
Assessor's Parcel Numbers Shown in Circles