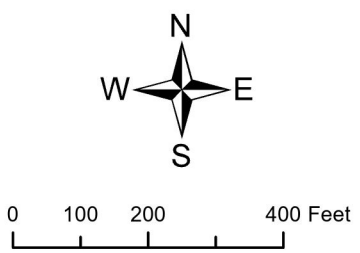
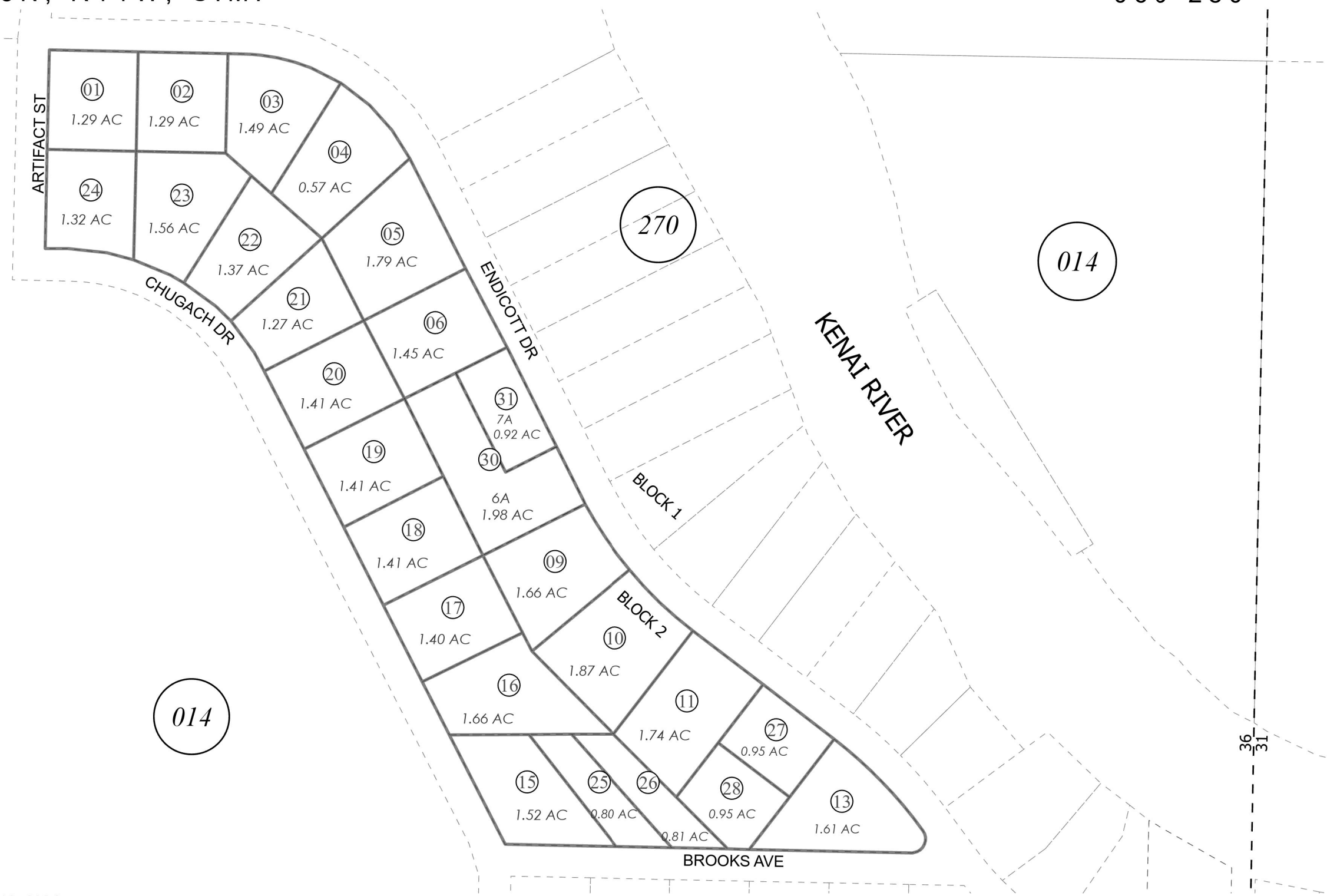


POR. SEC. 36, T05N, R11W, S.M.

060-280



MAY 13, 2024

For 2025 assessment roll		
Delete	Add	Revise
To		
07-08	30-31	

Assessor's Map  
Kenai Peninsula Borough

SLIKOK CREEK 1977 RESUB LOT 2 BLK 2 KN78100  
SLIKOK CREEK ALASKA SUBD MOORE REPLAT KN2024010

This map is prepared for Kenai Peninsula Borough Assessing Dept. use only and is not intended for conveyance nor is it a survey.

Note- Assessor's block Numbers Shown in Ellipses  
Assessor's Parcel Numbers Shown in Circles