

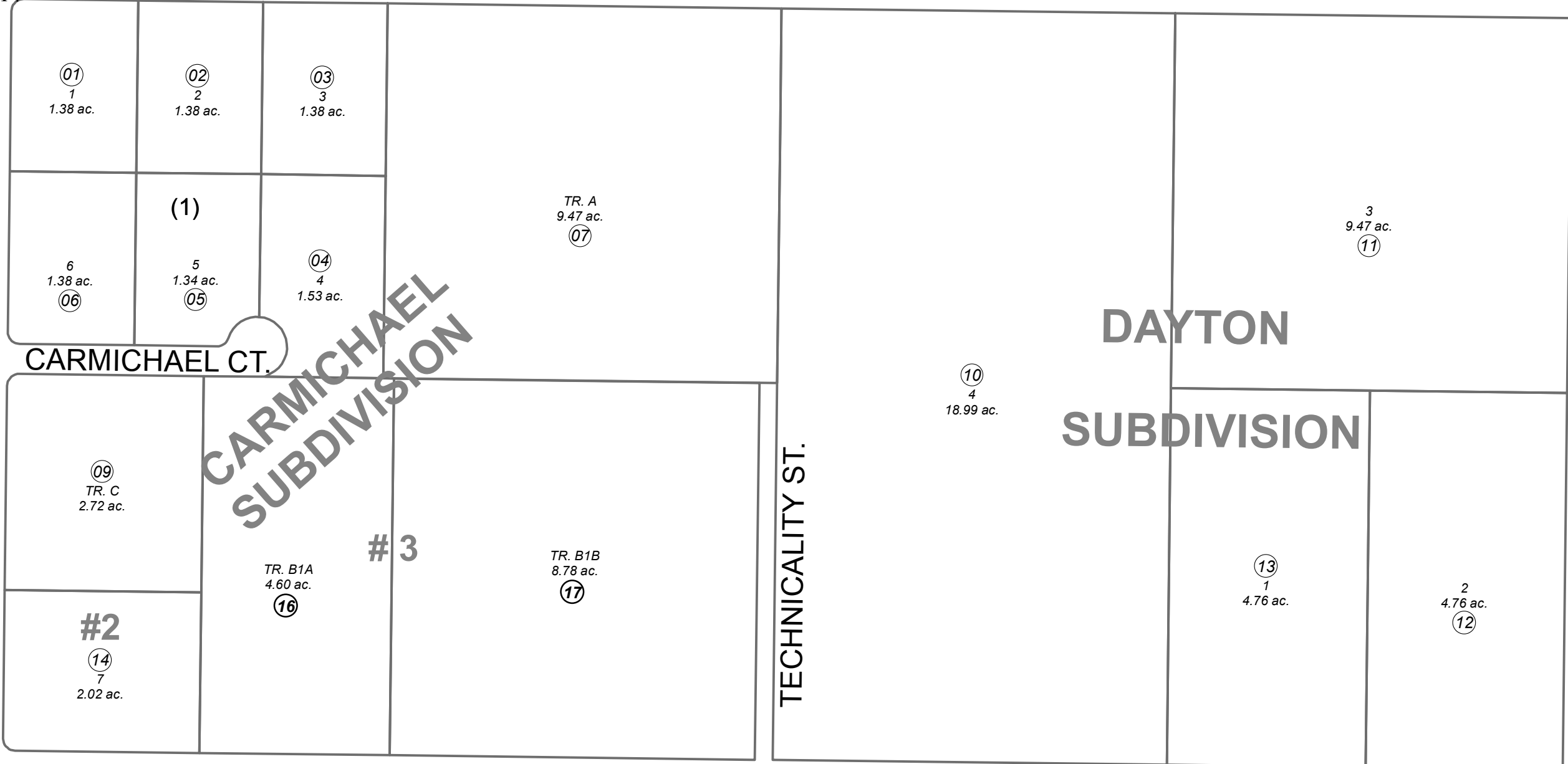
N1/2 NW1/4 SEC. 14, T05N, R09W, S.M.

063-820

BLEXES AVE.

620

10 11
15 14



CARMICHAEL SUBDIVISION

DAYTON SUBDIVISION

DIANE ST.

CARMICHAEL CT.

TECHNICALITY ST.

GLACIER AVE.

143

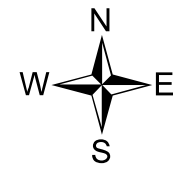
740

880

570

MAY 5, 2016

For 2017 assessment roll		
Delete	Add	Revise
To		
15	16,17	



0 100 200 Feet

Assessor's Map
Kenai Peninsula Borough

DAYTON SUB □ KN0810147
CARMICHAEL SUB □ KN0830111
CARMICHAEL SUB #2 □ KN2003088
CARMICHAEL SUB #3 □ KN2016002

Note- Assessor's block Numbers Shown in Ellipses
Assessor's Parcel Numbers Shown in Circles

This map is prepared for Kenai Peninsula Borough Assessing Dept. use only and is not intended for conveyance nor is it a survey.