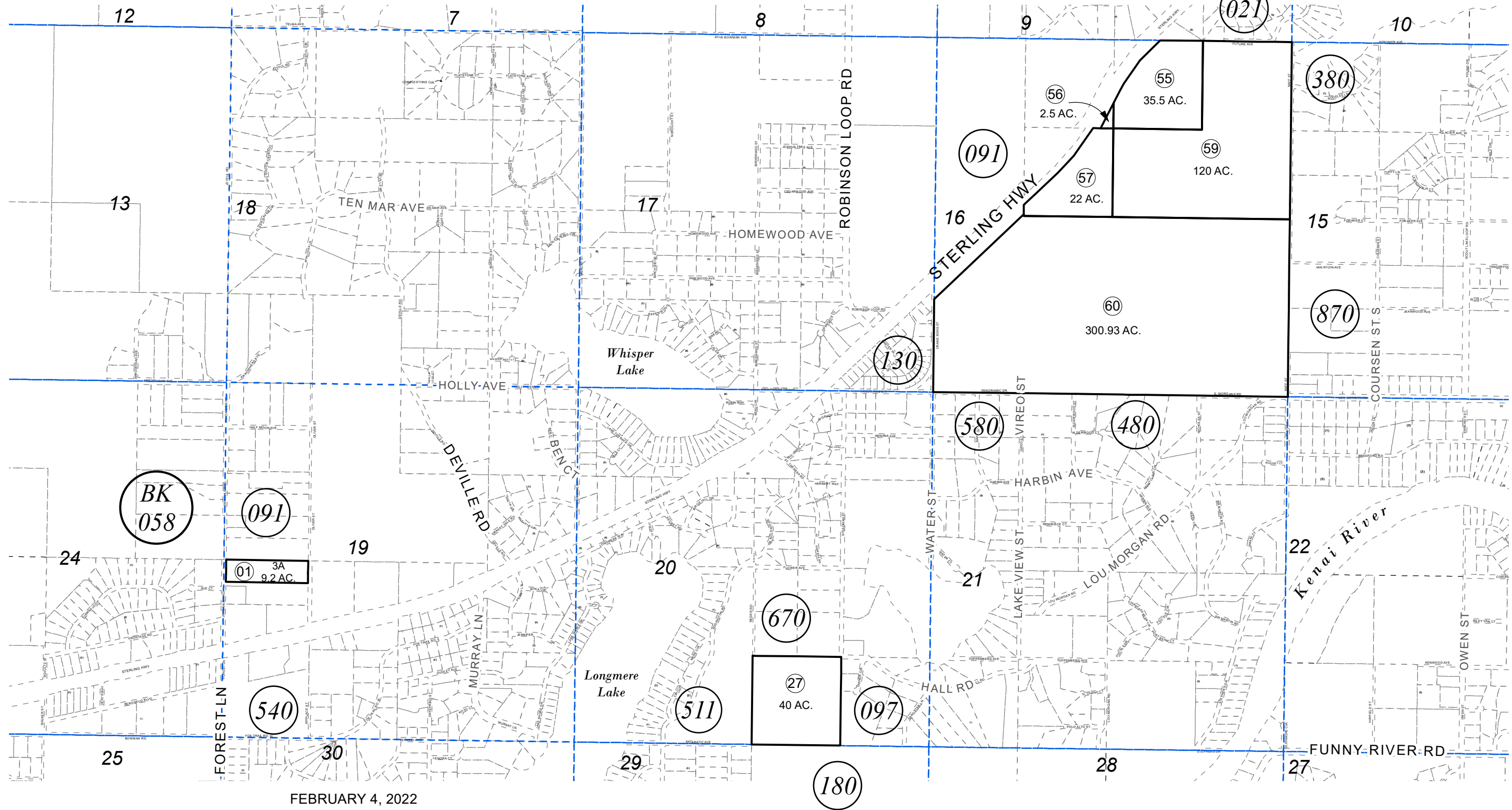
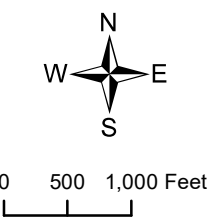


POR. SEC. 16, 19, AND 20, T05N, R09W, S.M.

063-092



FEBRUARY 4, 2022



For 2022 assessment roll		
Delete	Add	Revise
To		
	01	

Assessor's Map
Kenai Peninsula Borough

DAHLER SUB REVIS REPLAT KN2021092

This map is prepared for Kenai Peninsula Borough Assessing Dept. use only and is not intended for conveyance nor is it a survey.
Note- Assessor's block Numbers Shown in Ellipses
Assessor's Parcel Numbers Shown in Circles