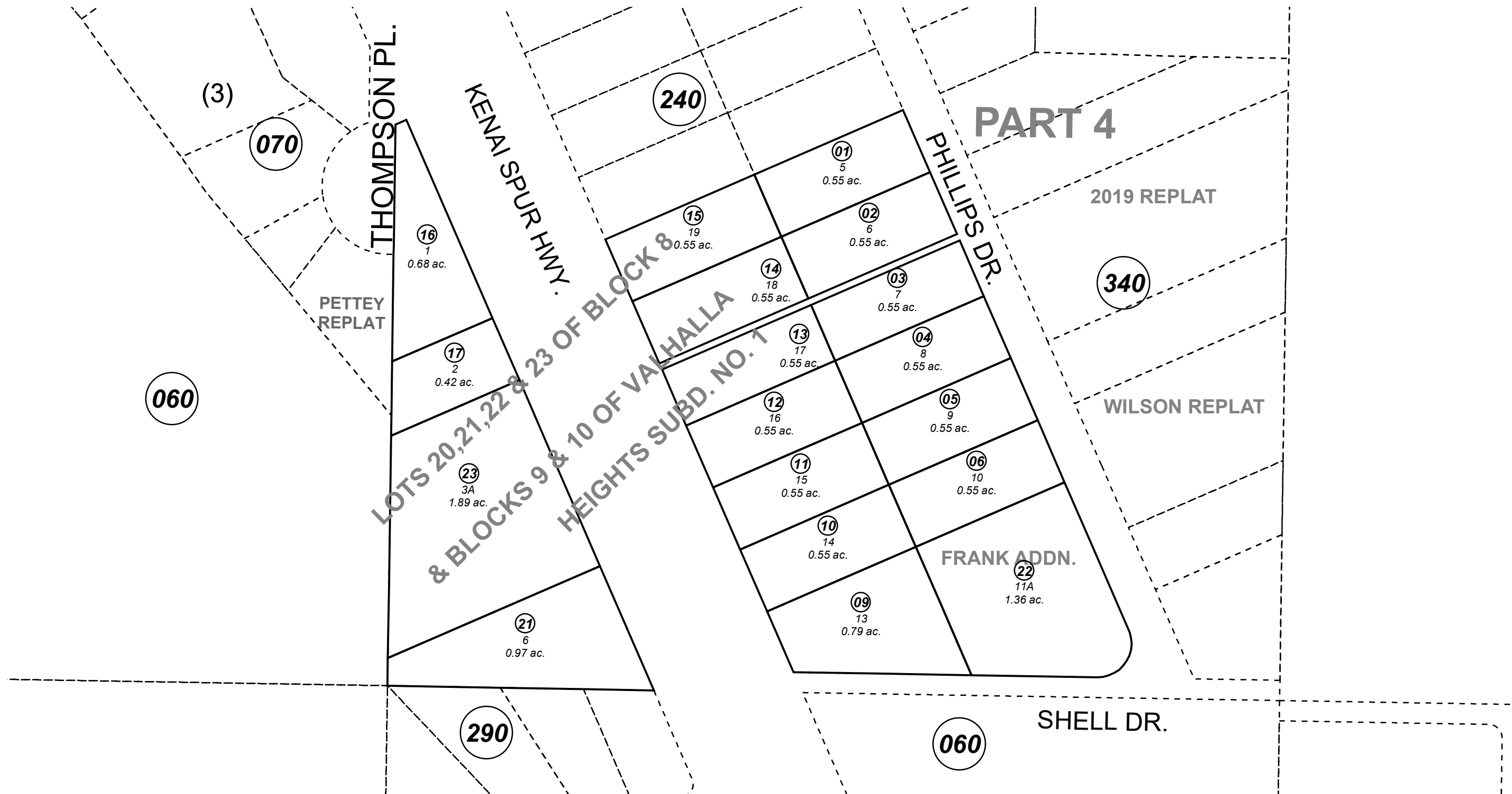


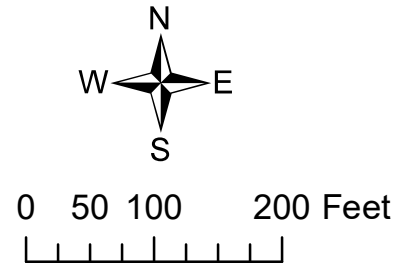
POR. SEC. 6, T05N, R10W, S.M.

049-250



JANUARY 2, 2020

For 2020 assessment roll		
Delete	Add	Revise
To		
18-20	23	



Assessor's Map  
Kenai Peninsula Borough

VALHALLA HEIGHTS SUB PART 1 KN0001633  
VALHALLA HEIGHTS SUB FRANK ADDN KN2002122  
VALHALLA HEIGHTS SUB WHITE REPLAT KN2019074

Note- Assessor's block Numbers Shown in Ellipses  
Assessor's Parcel Numbers Shown in Circles

This map is prepared for Kenai Peninsula Borough Assessing Dept. use only and is not intended for conveyance nor is it a survey.