

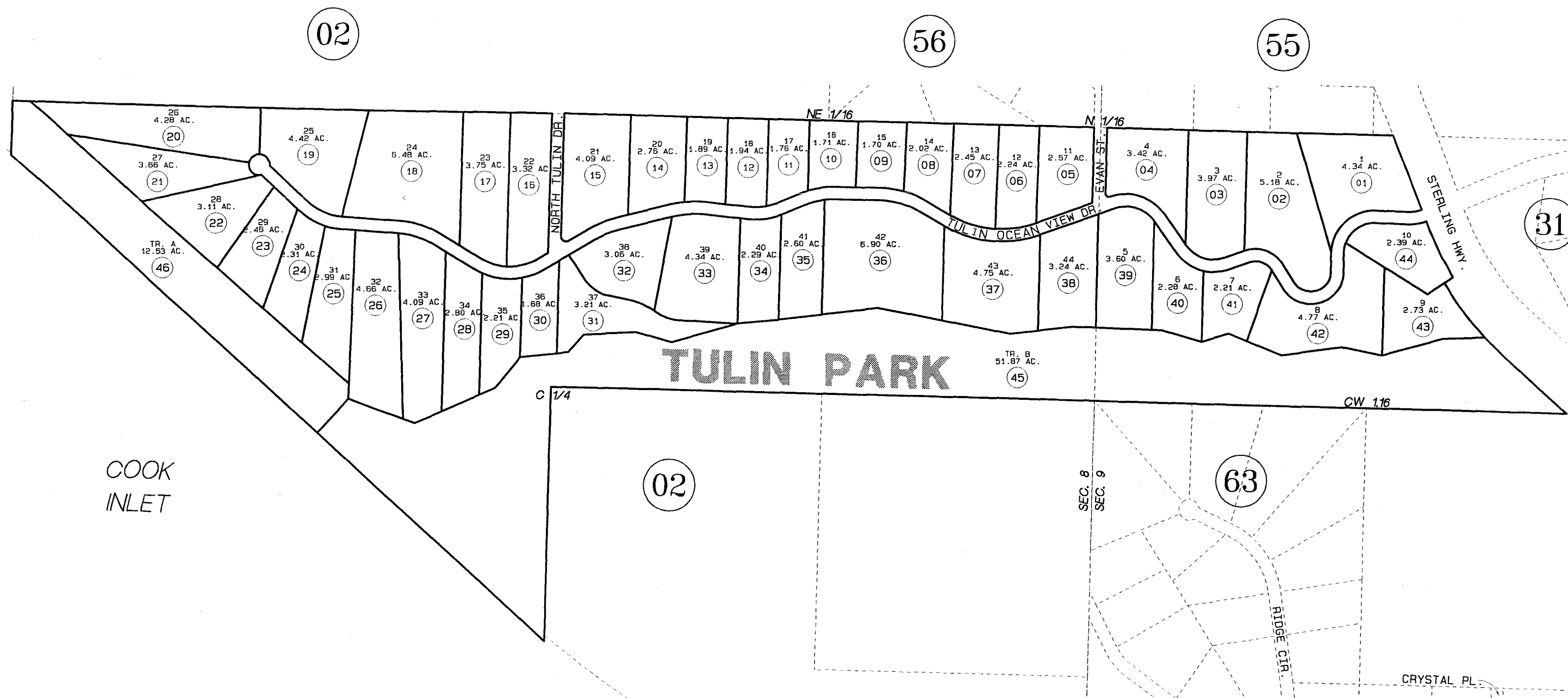
GOV'T. LOTS 1&2 & S1/2 NE1/4 SEC. 8

173-023

&

S1/2 NW1/4 SEC. 9 LYING WEST OF STERLING HWY.

T6S, R14W, SEWARD MERIDIAN



COOK
INLET

02

63

DATE: DEC. 15, 1995

FOR 1996 ASSESSMENT ROLL		
DELETE	ADD	REVISED
TO		
NEW PAGE		

TULIN PARK HM950001
 Assessor's Map
 Kenai Peninsula Borough

THIS MAP IS PREPARED FOR KENAI PENINSULA BOROUGH ASSESSING DEPT. USE ONLY AND IS NOT INTENDED FOR ANY OTHER USE OR REPRESENTATION

NOTE - Assessor's Block Numbers Shown In Ellipses
 Assessor's Parcel Numbers Shown In Circles