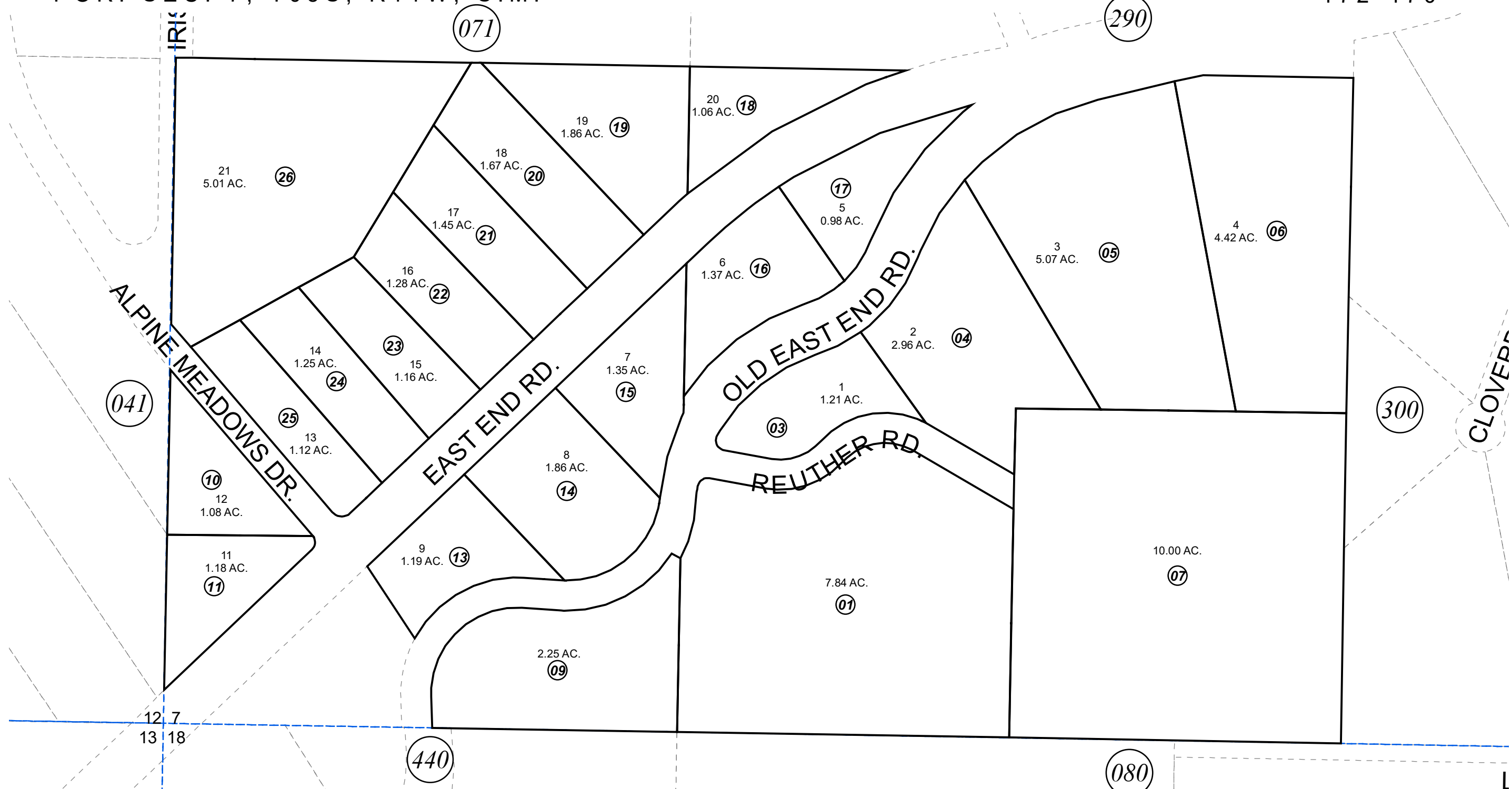


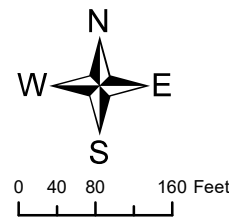
POR. SEC. 7, T05S, R11W, S.M.

172-470



SEPTEMBER 18, 2019

For 2020 assessment roll		
Delete	Add	Revise
To		
12	172440+	



Assessor's Map  
Kenai Peninsula Borough

HM0830056 CONDRA TERRACE SUB  
HM0870001 CONDRA TERRACE TOO SUB

This map is prepared for Kenai Peninsula Borough Assessing Dept. use only and is not intended for conveyance nor is it a survey.  
Note- Assessor's block Numbers Shown in Ellipses  
Assessor's Parcel Numbers Shown in Circles