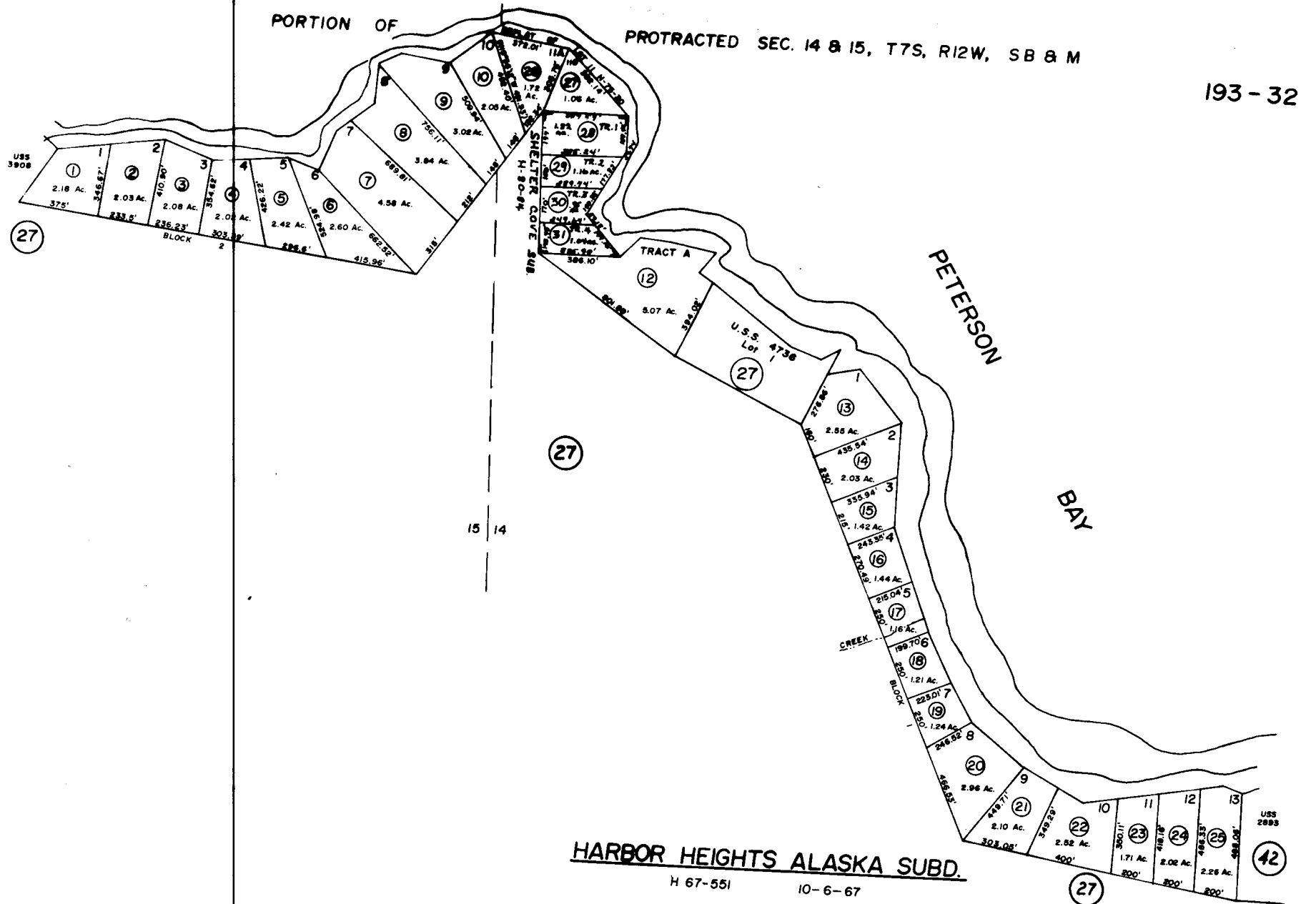


PORTION OF

PROTRACTED SEC. 14 & 15, T7S, R12W, SB & M

193-32



HARBOR HEIGHTS ALASKA SUBD.

H 67-551

10-6-67

NOTE - Assessor's Block Numbers Shown in Ellipses
Assessor's Parcel Numbers Shown in Circles

Kenai Peninsula Borough, Alaska