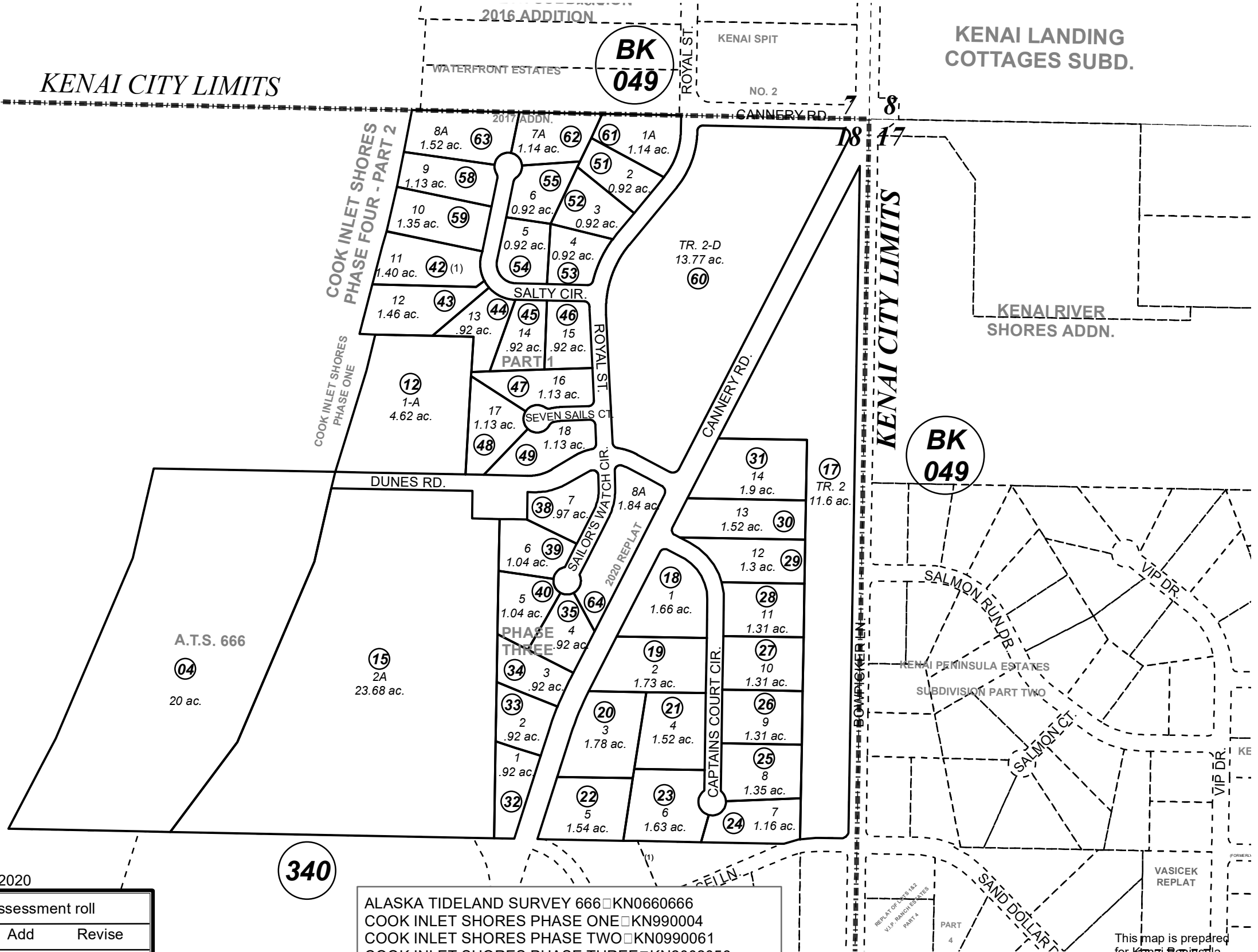


KENAI CITY LIMITS

KENAI LANDING COTTAGES SUBD.

COOK INLET



0 200 400 Feet

APRIL 21, 2020

For 2021 assessment roll		
Delete	Add	Revise
		To
36,37	64	

Assessor's Map
Kenai Peninsula Borough

340

ALASKA TIDELAND SURVEY 666 □ KN0660666
 COOK INLET SHORES PHASE ONE □ KN990004
 COOK INLET SHORES PHASE TWO □ KN0990061
 COOK INLET SHORES PHASE THREE □ KN2002056
 COOK INLET SHORES PHASE FOUR PART 1 KN2008104
 COOK INLET SHORES PHASE FOUR PART 2 KN2017016
 COOK INLET SHORES 2017 ADDN □ KN2019027
 COOK INLET SHORES 2020 REPLAT KN2020013

This map is prepared for Kenai Peninsula Borough Assessing Dept. use only and is not intended for conveyance nor is it a survey.

Note- Assessor's block Numbers Shown in Ellipses
Assessor's Parcel Numbers Shown in Circles