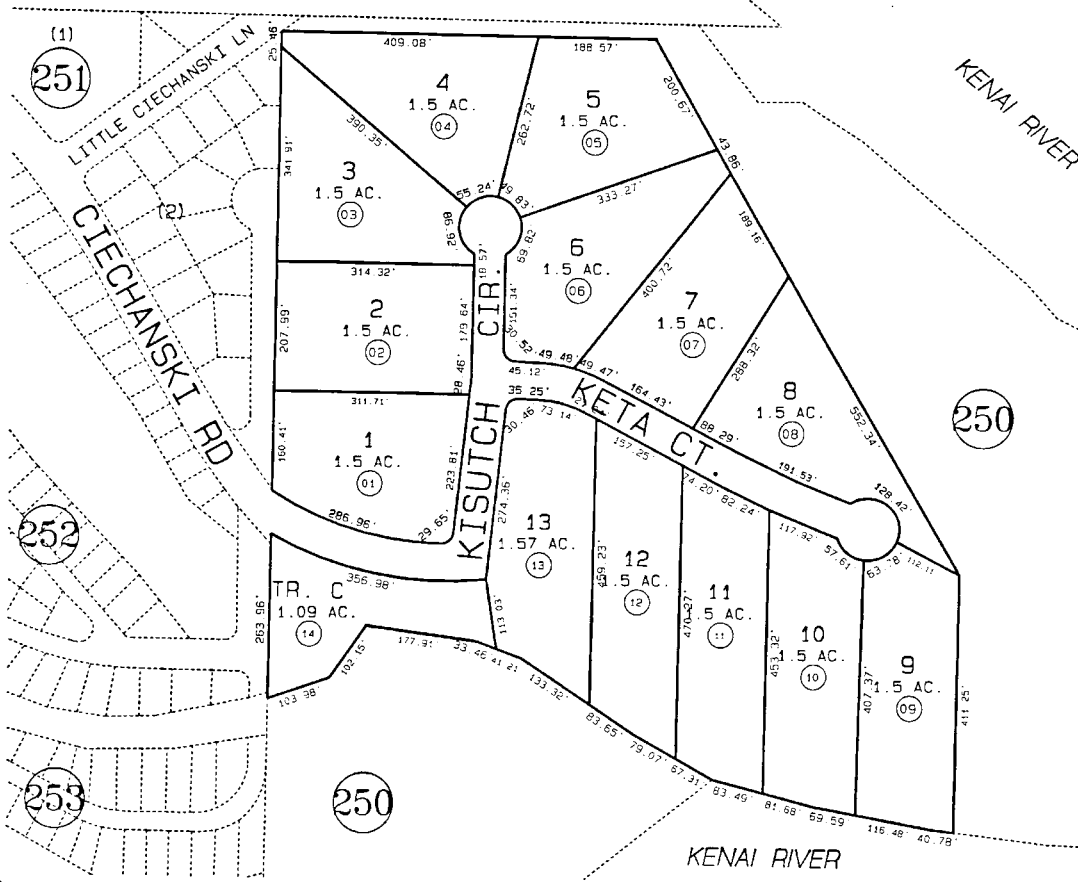


258



DATE: MAY 14, 1998

FOR 1999 ASSESSMENT ROLL		
DELETE	ADD	REVISED
TO NEW PAGE		

Assessor's Map
 Kenai Peninsula Borough
 TIMBERLAND TERRACE PHASE TWO KN980008

THIS MAP IS PREPARED FOR KENAI PENINSULA BOROUGH ASSESSING DEPT USE ONLY AND IS NOT INTENDED FOR ANY OTHER USE OR REPRESENTATION
 NOTE - Assessor's Block Numbers Shown in Ellipses
 Assessor's Parcel Numbers Shown in Circles