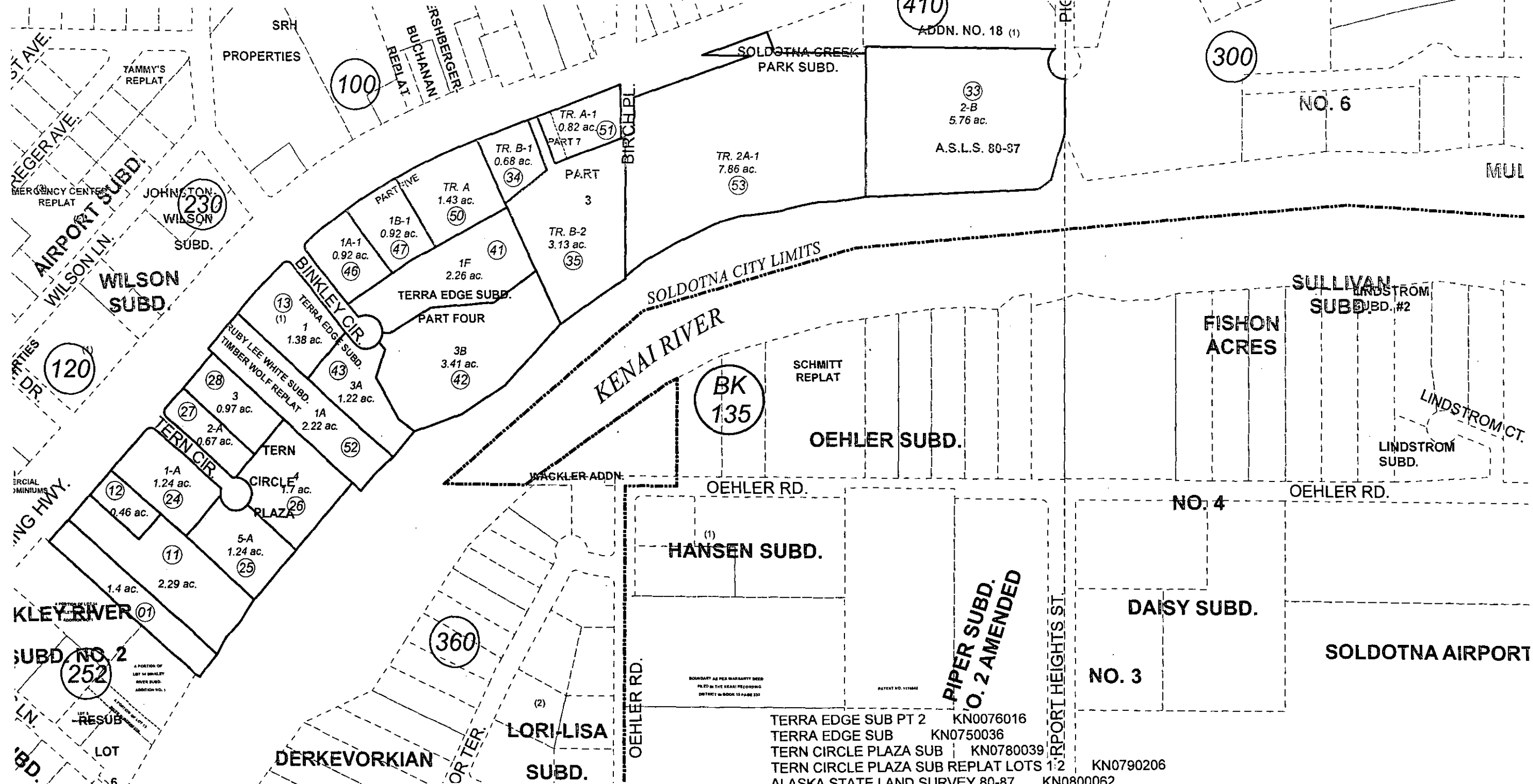


POR. SEC. 32, T05N, R10W, S.M.

060-240

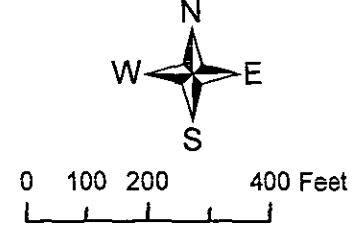


- TERRA EDGE SUB PT 2 KN0076016
- TERRA EDGE SUB KN0750036
- TERN CIRCLE PLAZA SUB KN0780039
- TERN CIRCLE PLAZA SUB REPLAT LOTS 1-2 KN0790206
- ALASKA STATE LAND SURVEY 80-87 KN0800062
- TERRA EDGE SUB PART 3 KN0850072
- TERRA EDGE SUB PART 4 KN0940034
- RUBY LEE WHITE SUB KN0970021
- TERRA EDGE SUB PART FIVE KN0970073
- TERRA EDGE SUB PT 6 KN2000048
- TERRA EDGE SUB PART SEVEN KN2003046
- RUBY LEE WHITE TIMBER WOLF REPLAT KN2007072
- TIMBER WOLF RESORT CONDOMINIUMS PHASE 1 KN2007086
- SOLDOTNA CREEK PARK SUB KN2010010
- RECORD OF SURVEY KN2010058

NOVEMBER 28, 2011

For 2012 assessment roll		
Delete	Add	Revise
		52
(REMOVE CONDOMINIUM REFERENCE)		

Assessor's Map  
Kenai Peninsula Borough



This map is prepared for Kenai Peninsula Borough Assessing Dept. use only and is not intended for conveyance nor is it a survey.  
Note- Assessor's block Numbers Shown in Ellipses  
Assessor's Parcel Numbers Shown in Circles