

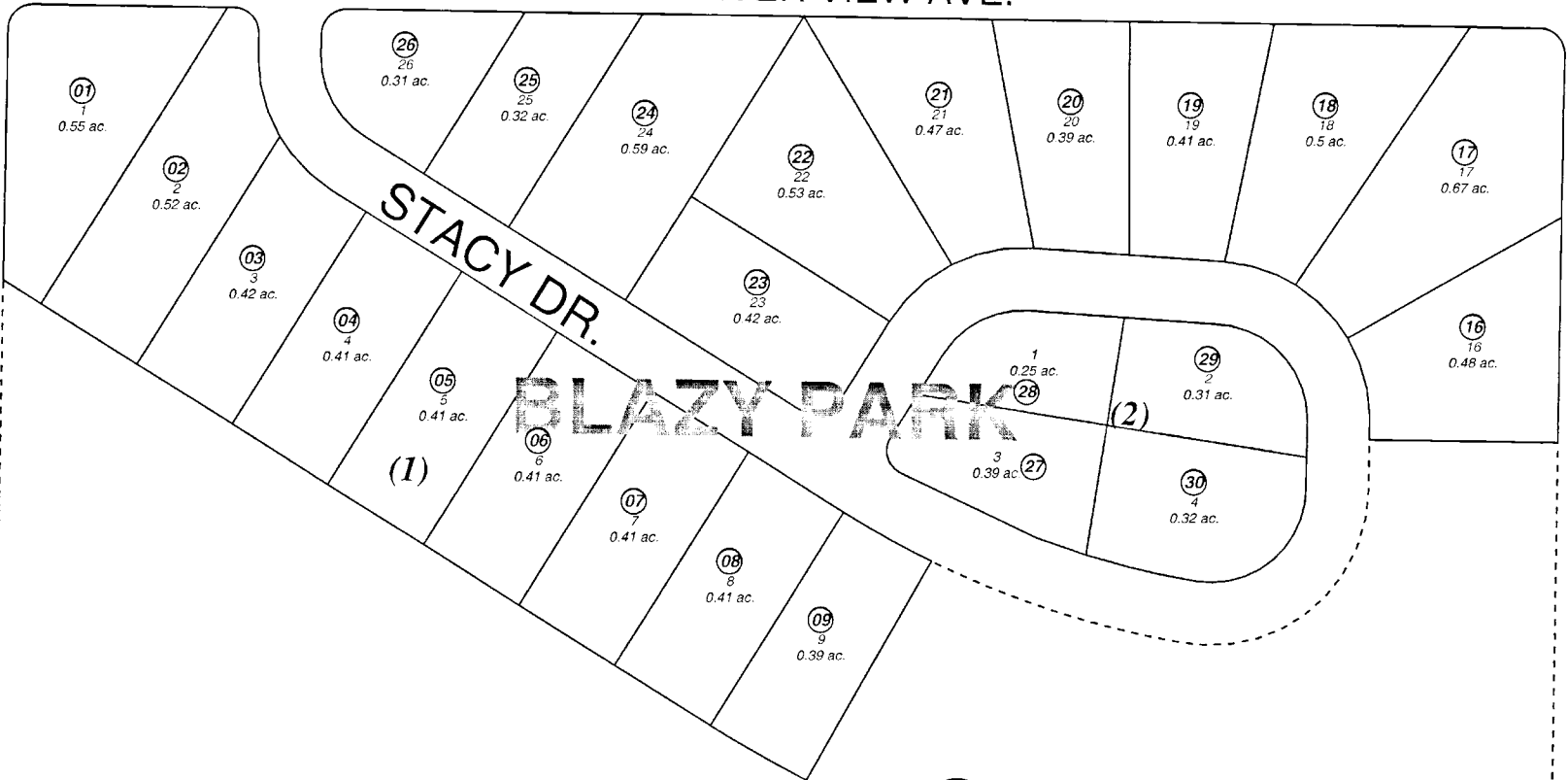
140

140

RIVER VIEW AVE.

150

SOUTH KOBUK ST.



BLAZY PARK

(1)

(2)

NO. 2

012

NO 110

S. FIREWEED ST.



JANUARY 3, 2003

For 2003 assessment roll		
Delete	Add	Revise
To		
10-15	06001202	

Assessor's Map
Kenai Peninsula Borough

BLAZY PARK SUB KN0750043

This map is prepared for Kenai Peninsula Borough Assessing Dept. use only and is not intended for conveyance nor is it a survey.

Note- Assessor's block Numbers Shown in Ellipses
Assessor's Parcel Numbers Shown in Circles