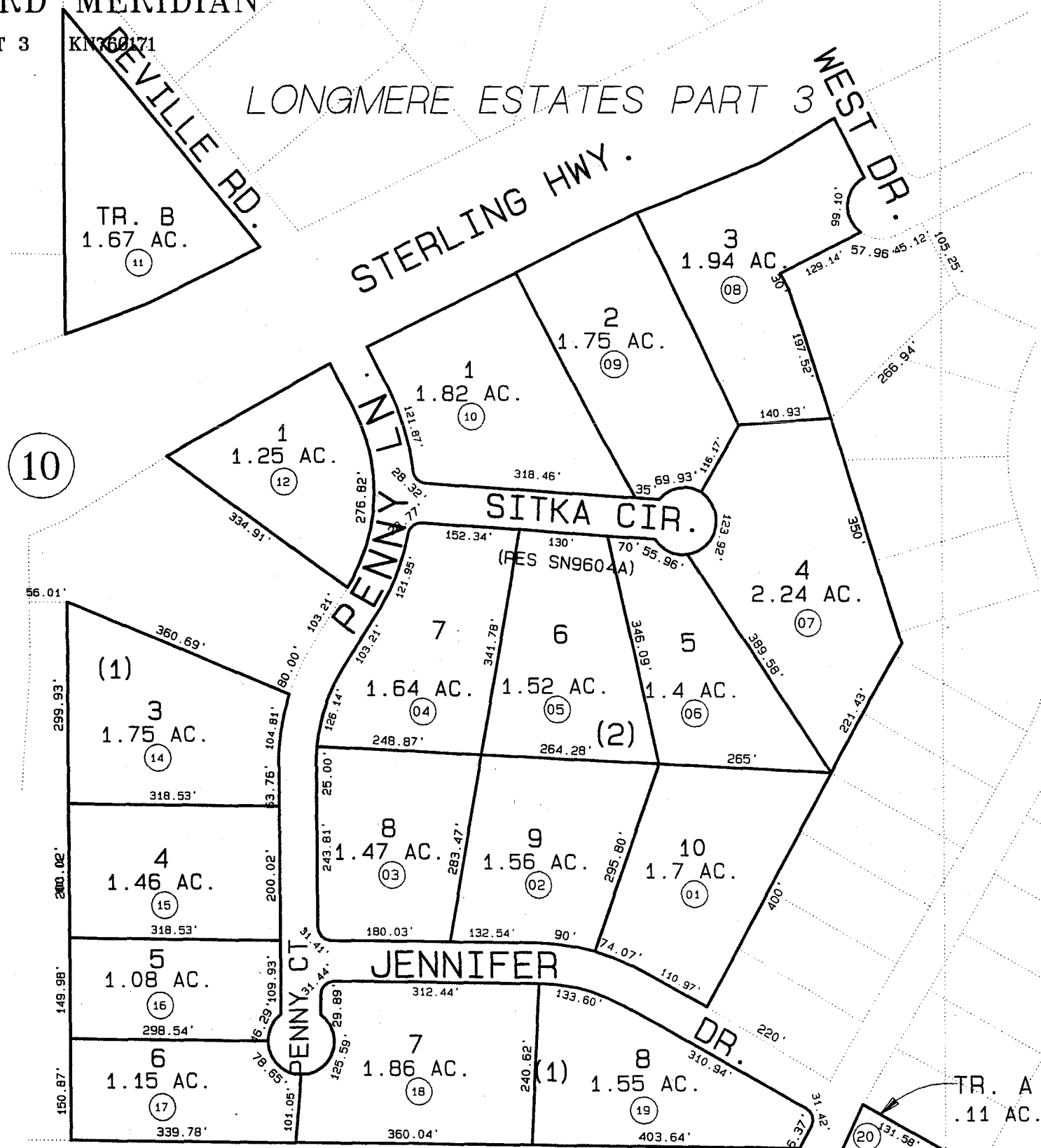


POR. NE1/4 SE1/4 & SE1/4 NE1/4 SEC. 19,
T5N, R9W, SEWARD MERIDIAN

063-520

LONGMERE ESTATES PART 3 KN760171

LONGMERE ESTATES PART 3



10

24

25

11



DATE: SEPT. 11, 1998

FOR 19 99 ASSESSMENT ROLL		
DELETE	ADD	REVISED
TO		
13	06310006	

Assessor's Map
Kenai Peninsula Borough

TR. A
.11 AC.

THIS MAP IS PREPARED FOR KENAI PENINSULA BOROUGH ASSESSING DEPT. USE ONLY AND IS NOT INTENDED FOR ANY OTHER USE OR REPRESENTATION

NOTE - Assessor's Block Numbers Shown In Ellipses
Assessor's Parcel Numbers Shown In Circles