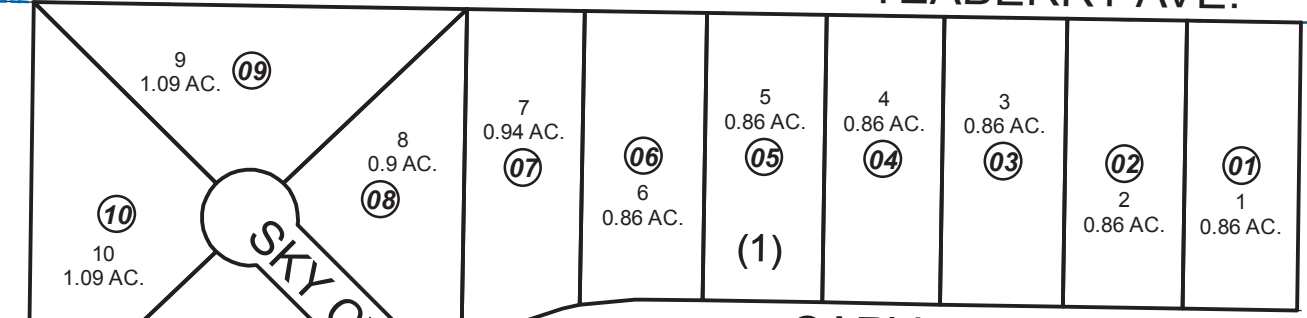


POR. SEC. 5, T05N, R10W, S.M.

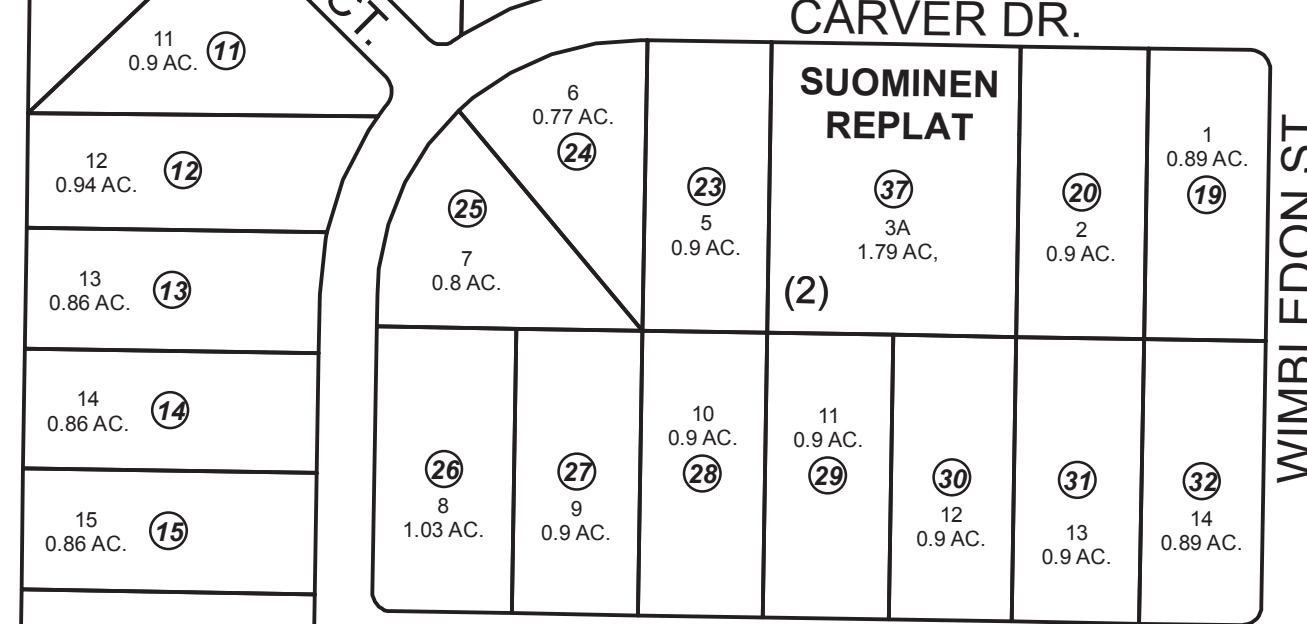
BK
025

057-260

TEABERRY AVE.



CARVER DR.



SUOMINEN
REPLAT

(2)

CARVER
PART ONE

(3)

WIMBLEDON ST.

MACVIE
REPLAT

OLIVIA WAY

(360)

(5)

(6)

GENE AVE.

(4)

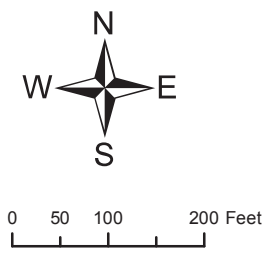
(010)

(210)

GA SUBS. & RESUBS.

JANUARY 3, 2018

For 2018 assessment roll		
Delete	Add	Revise
To		
21,22	37	



Assessor's Map
Kenai Peninsula Borough

CARVER SUB PART 1 KN0001685
CARVER SUB SUOMINEN REPLAT KN2017069

Note- Assessor's block Numbers Shown in Elipses
Assessor's Parcel Numbers Shown in Circles

This map is prepared
for Kenai Peninsula
Borough Assessing Dept.
use only and is not
intended for conveyance
nor is it a survey.