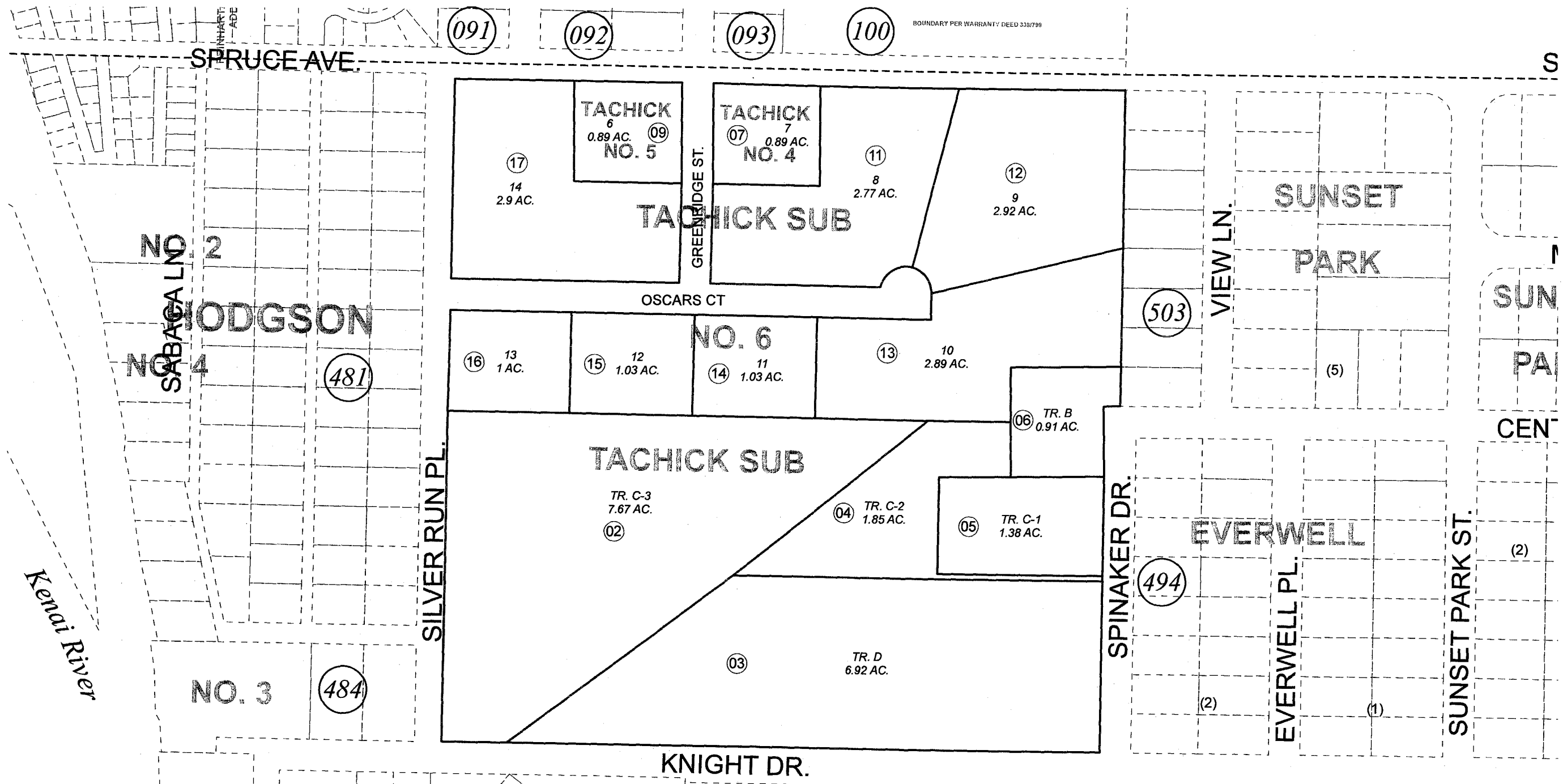


NW1/4, NE1/4, SEC. 30, T05N, R10W, S.M.

057-620



NOVEMBER 4, 2008

For 2009 assessment roll		
Delete	Add	Revise
	To	
10	11-17	

Assessor's Map
Kenai Peninsula Borough

BK
059

TACHICK SUB KN0720035
TACHICK SUB TRACTS C & D KN0740047
TACHICK RESUB OF TRACT C KN0790112
TACHICK SUB NO 4 KN0840137
TACHICK SUB NO 5 KN0850199
TACHICK SUB NO 6 KN2008110

This map is prepared for Kenai Peninsula Borough Assessing Dept. use only and is not intended for conveyance nor is it a survey.
Note- Assessor's block Numbers Shown in Ellipses
Assessor's Parcel Numbers Shown in Circles