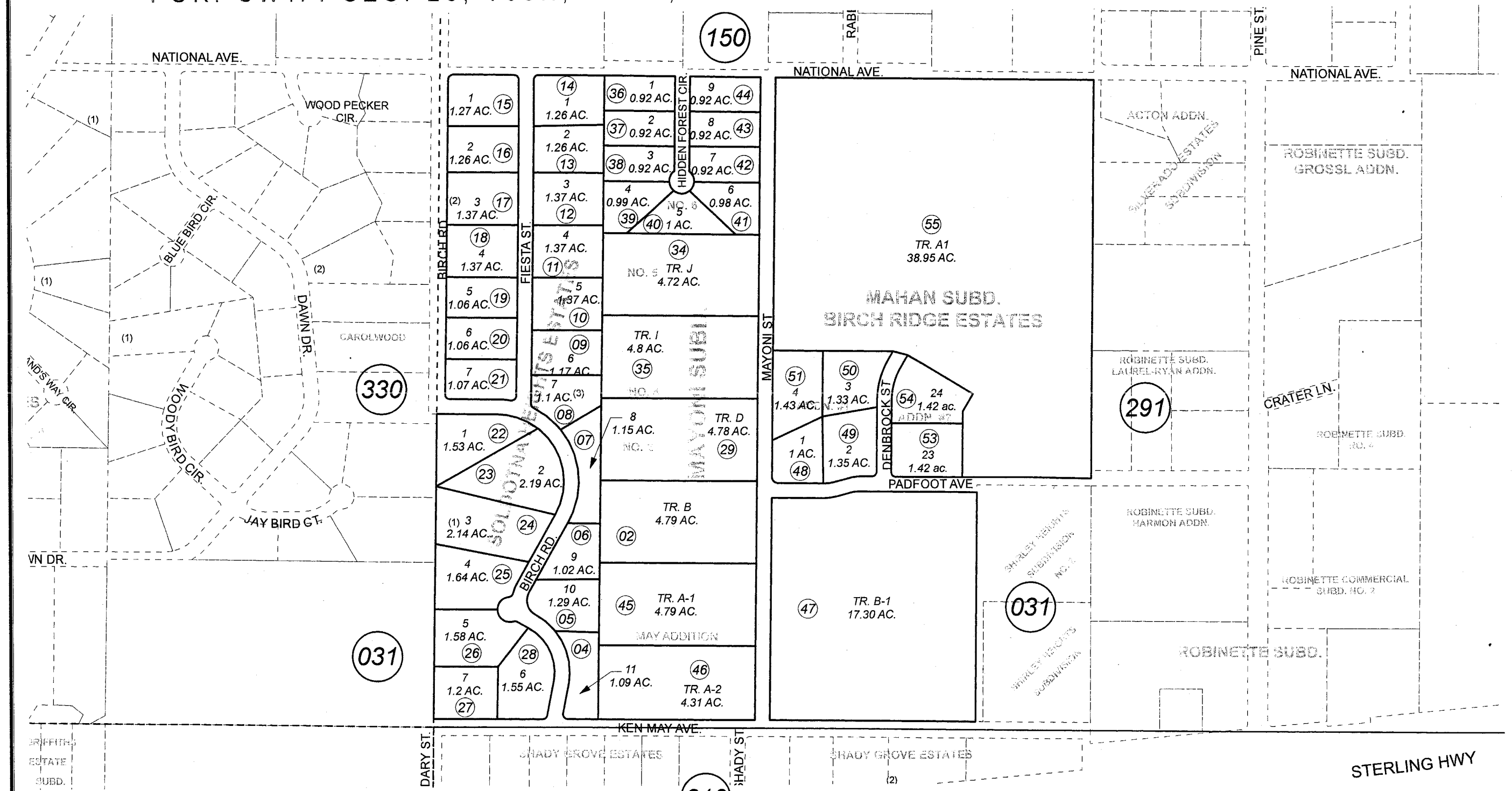


POR. SW1/4 SEC. 23, T05N, R10W, S.M.

058-260



DECEMBER 26, 2007

For 2008 assessment roll		
Delete	Add	Revise
To		
52	53-55	

Assessor's Map
Kenai Peninsula Borough

- 210
 MAYONI SUB □ KN0760177
 SOLDOTNA HEIGHTS ESTATES SUB □ KN0780094
 MAYONI SUB NO 2 □ KN0810074
 MAYONI SUB NO 4 □ KN0830122
 MAYONI SUB NO 5 □ KN0830163
 MAYONI SUB NO 6 □ KN0850114
 MAYONI SUB MAY ADDN □ KN2005042
 MAHAN SUB BIRCH RIDGE ESTATES ADDN #1 □ KN2006078
 MAHAN SUB BIRCH RIDGE ESTATES ADDN #2 KN2007130



This map is prepared for Kenai Peninsula Borough Assessing Dept. use only and is not intended for conveyance nor is it a survey.
 Note- Assessor's block Numbers Shown in Ellipses
 Assessor's Parcel Numbers Shown in Circles