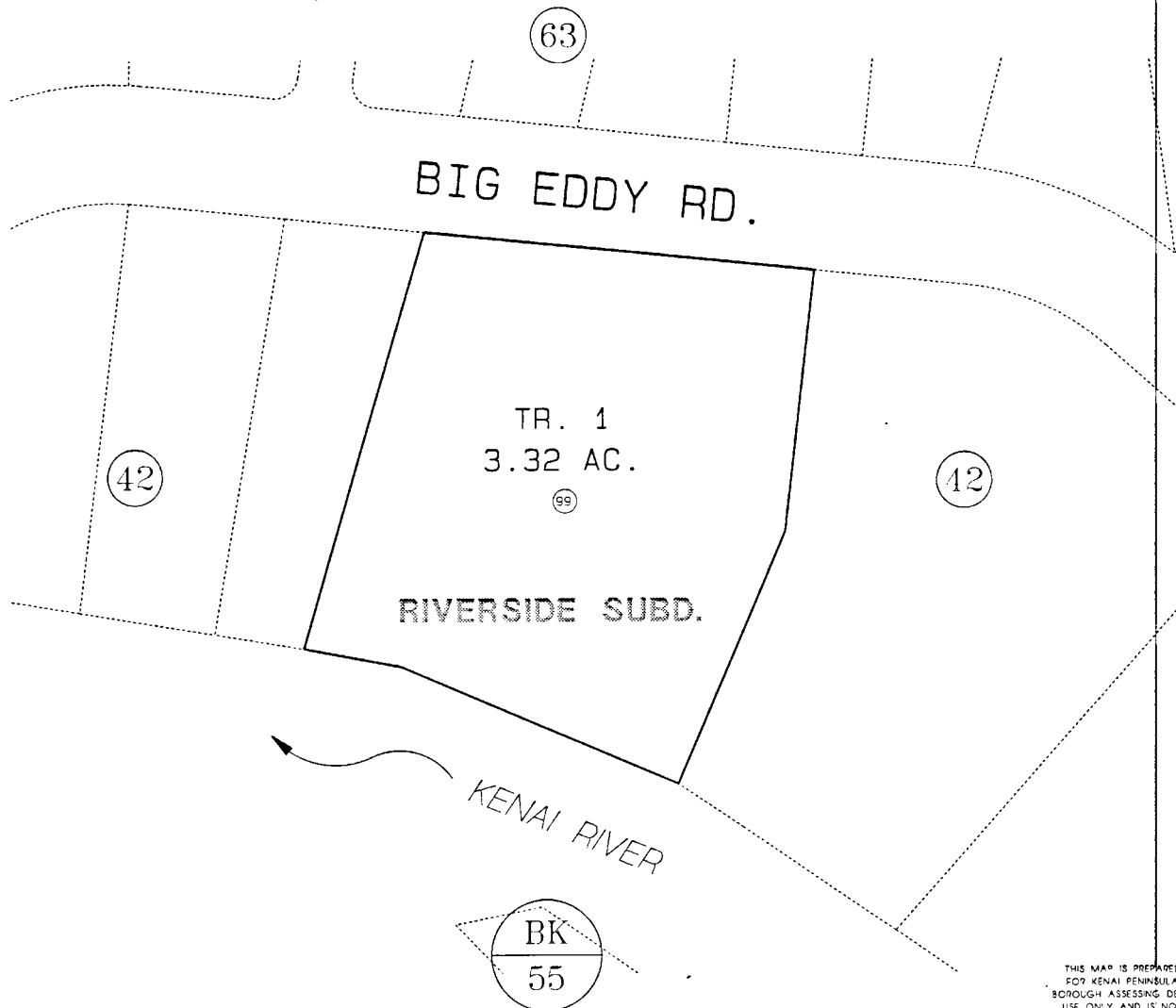


POR SEC. 19, T5N, R10W, S.M.

057-421

RIVERSIDE CAMPGROUND

- (01) SPACE 01 (23) SPACE 23
- (02) SPACE 02 (24) SPACE 24
- (03) SPACE 03 (25) SPACE 25
- (04) SPACE 04 (26) SPACE 26
- (05) SPACE 05 (27) SPACE 27
- (06) SPACE 06 (28) SPACE 28
- (07) SPACE 07 (29) SPACE 29
- (08) SPACE 08 (30) SPACE 30
- (09) SPACE 09 (31) SPACE 31
- (10) SPACE 10 (32) SPACE 32
- (11) SPACE 11
- (12) SPACE 12
- (13) SPACE 13
- (14) SPACE 14
- (15) SPACE 15
- (16) SPACE 16
- (17) SPACE 17
- (18) SPACE 18
- (19) SPACE 19
- (20) SPACE 20
- (21) SPACE 21
- (22) SPACE 22



DATE: OCT. 13, 1999

FOR 2000 ASSESSMENT ROLL		
DELETE	ADD	REVISED

TO
NEW
PAGE

Assessor's Map
Kenai Peninsula Borough

THIS MAP IS PREPARED FOR KENAI PENINSULA BOROUGH ASSESSING DEPT. USE ONLY AND IS NOT INTENDED FOR CONVEYANCE NOR IS IT A SURVEY.

NOTE - Assessor's Block Numbers Shown In Ellipses
Assessor's Parcel Numbers Shown In Circles