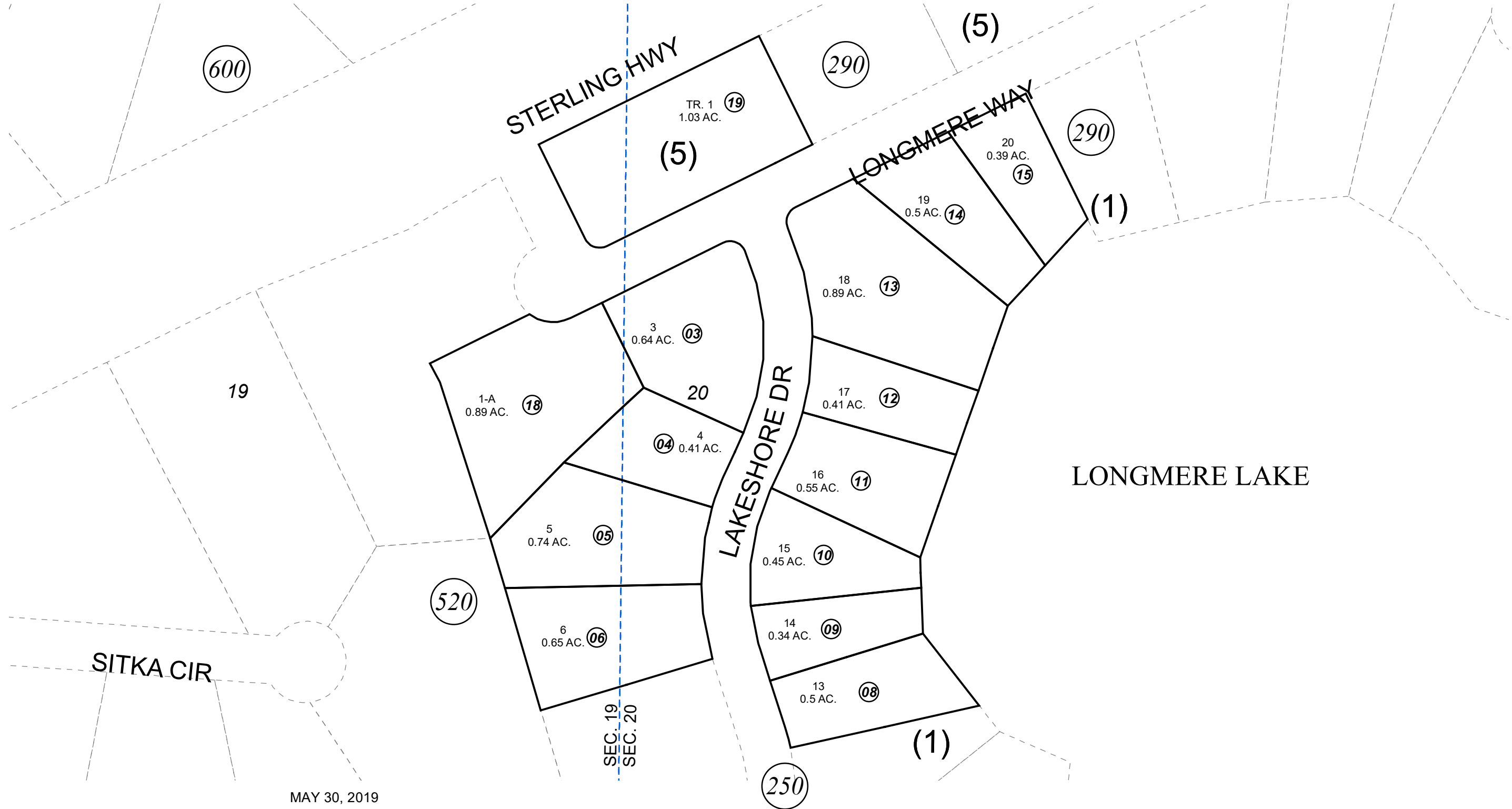


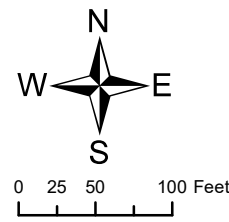
POR. SEC. 19 & 20, T05N, R09W, S.M.

063-240



MAY 30, 2019

For 2020 assessment roll		
Delete	Add	Revise
	To	
07	063250+	



Assessor's Map  
Kenai Peninsula Borough

KN0001780 LONGMERE ESTATES SUB PART 1  
 KN0760171 LONGMERE ESTATES SUB PART 3  
 KN0910051 LONGMERE ESTATES GAGNON ADDN

This map is prepared for Kenai Peninsula Borough Assessing Dept. use only and is not intended for conveyance nor is it a survey.  
 Note- Assessor's block Numbers Shown in Ellipses  
 Assessor's Parcel Numbers Shown in Circles