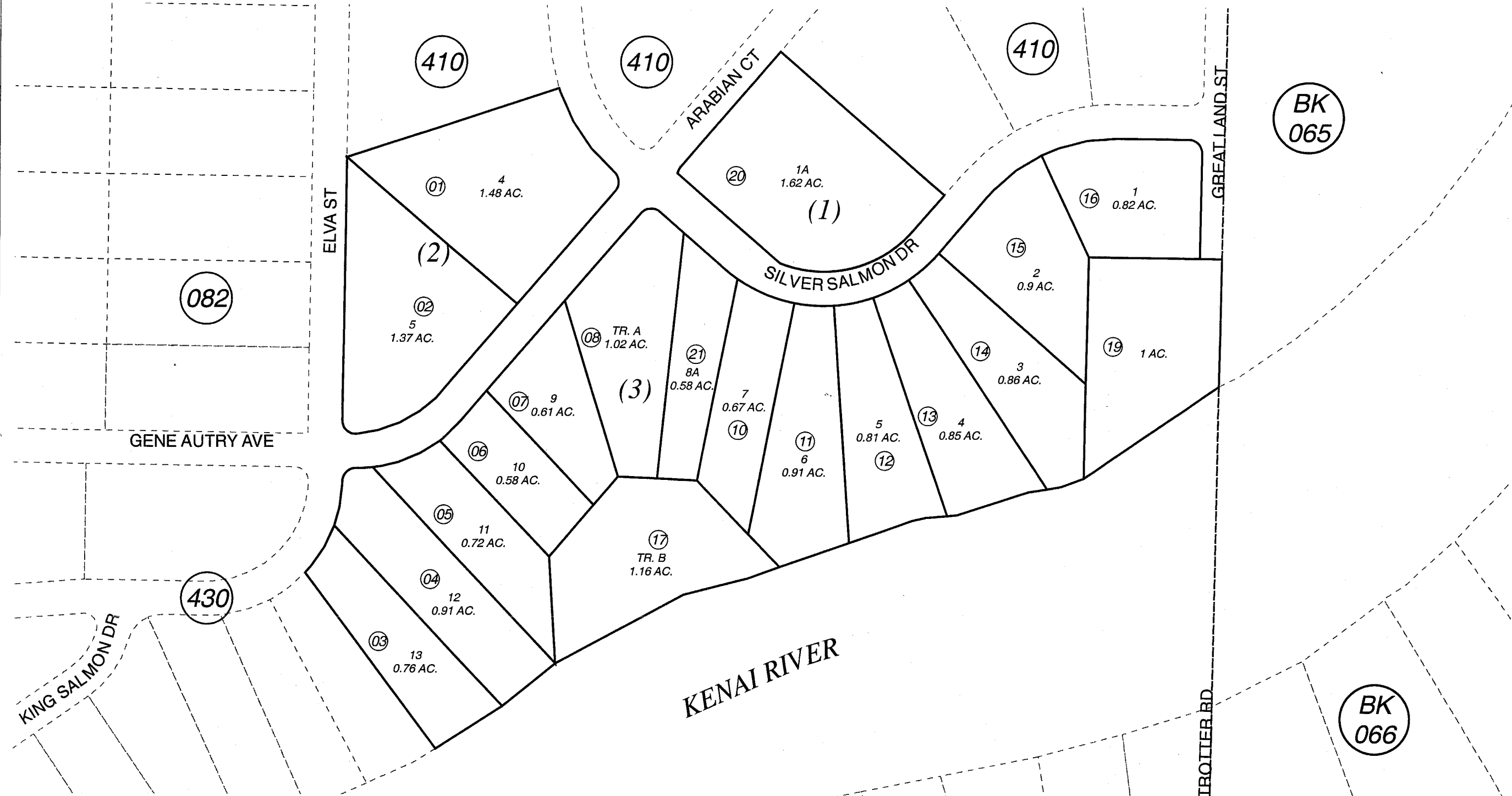


POR. SEC. 13, T05N, R09W, S.M.

063-420



JANUARY 5, 2006

For 2006 assessment roll		
Delete	Add	Revise
To		
9,18	20,21	

Assessor's Map
Kenai Peninsula Borough

MOOSE RIVER ESTATES SUB KN0740098
MOOSE RIVER ESTATES SUB TANGHE ADDN KN2005119

This map is prepared for Kenai Peninsula Borough Assessing Dept. use only and is not intended for conveyance nor is it a survey.
Note- Assessor's block Numbers Shown in Ellipses
Assessor's Parcel Numbers Shown in Circles