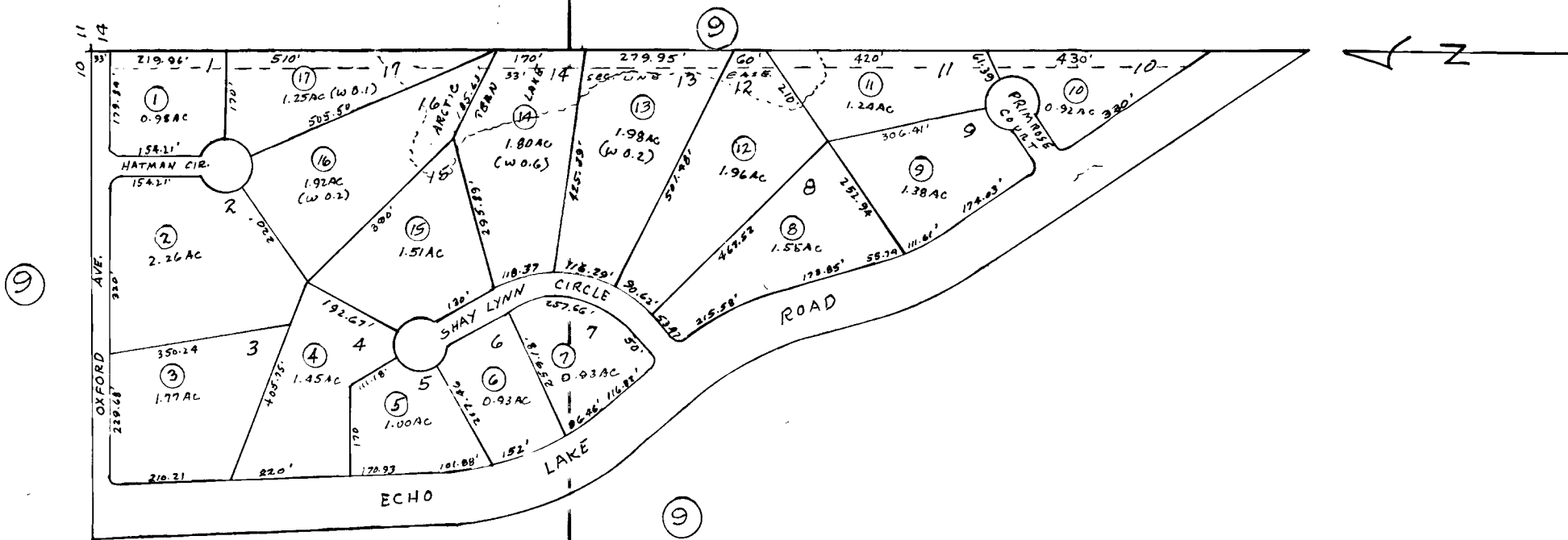


POR. SEC. 15, T4N, R11W, S.M.

131-72



**ECHO LAKE SUB. ANDREWS
1983 NORTH ADD. K83-273**

Assessor's Map
Kenai Peninsula Borough, Alaska

NOTE - Assessor's Block Numbers Shown in Ellipses
Assessor's Parcel Numbers Shown in Circles