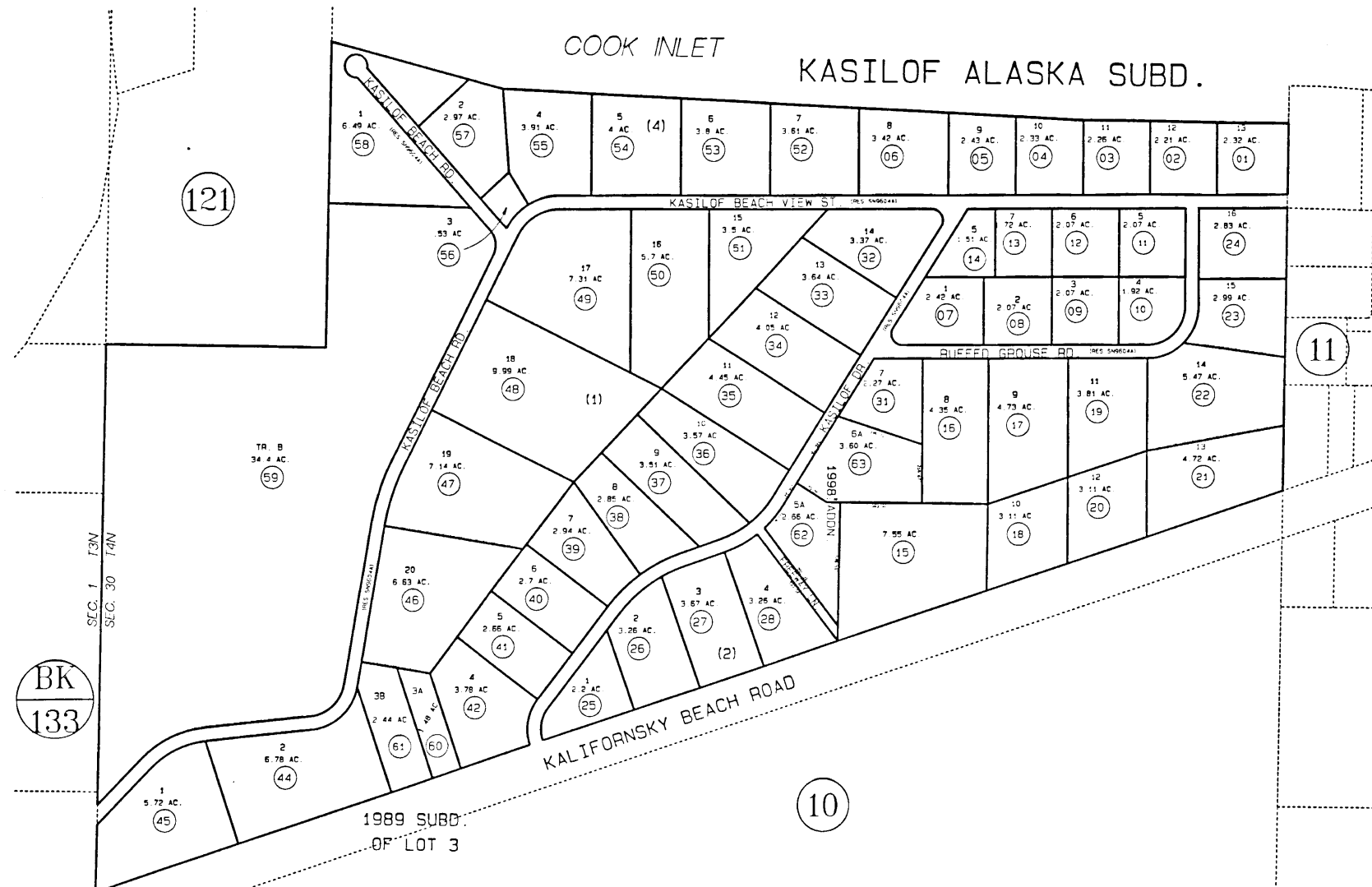


COOK INLET

KASILOF ALASKA SUBD.



DATE JAN. 8, 1999

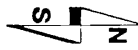
FOR 19 99 ASSESSMENT ROLL

DELETE	ADD	REVISED

TO

29,30	62,63
-------	-------

Assessor's Map  
Kenai Peninsula Borough



THIS MAP IS PREPARED FOR KENAI PENINSULA BOROUGH ASSESSING DEPT USE ONLY AND IS NOT INTENDED FOR ANY OTHER USE OR REPRESENTATION

NOTE - Assessor's Block Numbers Shown in Ellipses Assessor's Parcel Numbers Shown in Circles