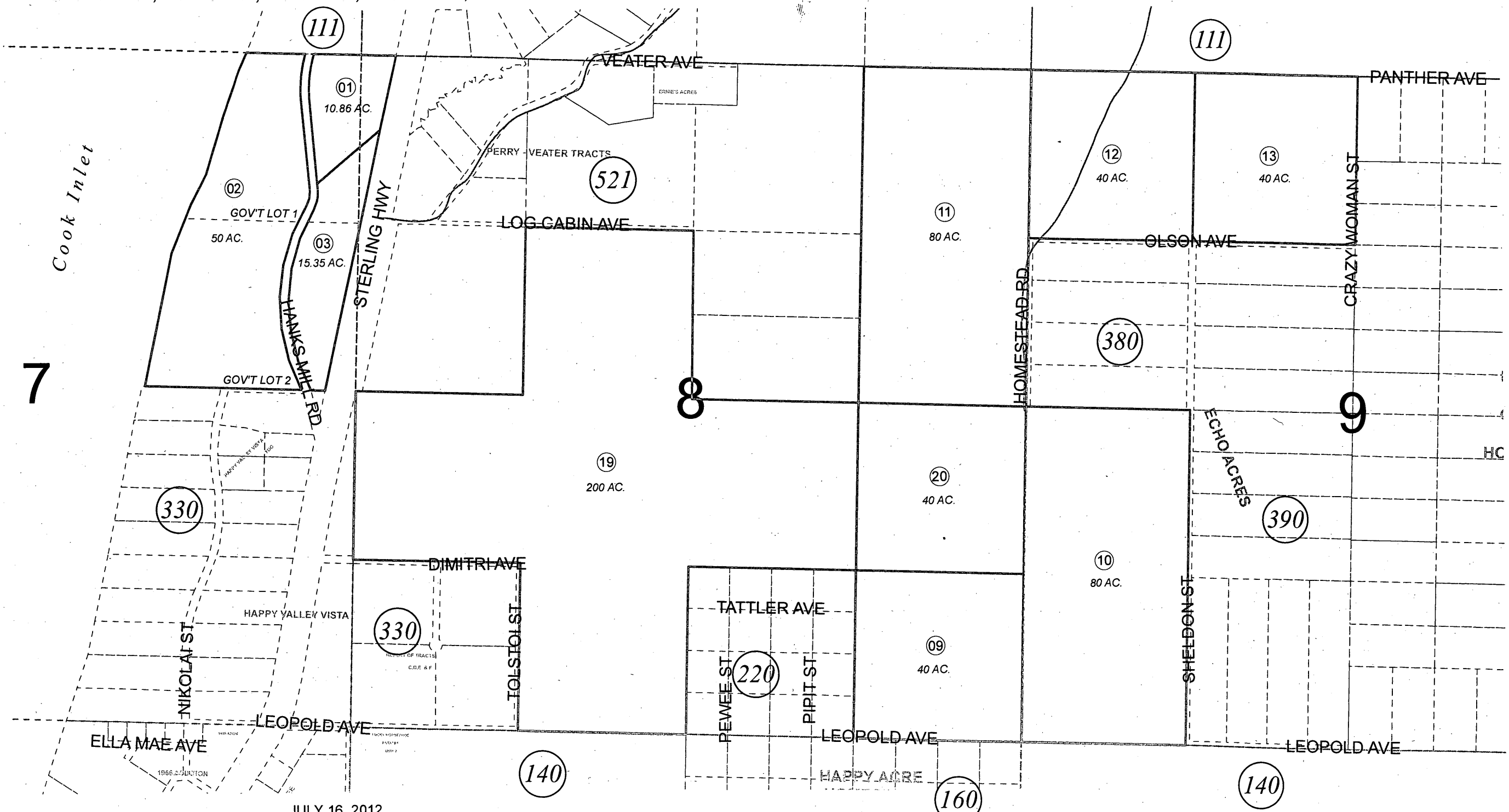


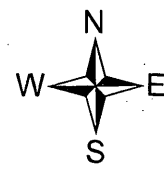
SEC. 7, 8 & 9, T03S, R14W, S.M.

159-112

Cook Inlet
7



JULY 16, 2012



For 2013 assessment roll		
Delete	Add	Revise
To		
MAP CORRECTION		

Assessor's Map
Kenai Peninsula Borough

This map is prepared for Kenai Peninsula Borough Assessing Dept. use only and is not intended for conveyance nor is it a survey.
Note- Assessor's block Numbers Shown in Ellipses. Assessor's Parcel Numbers Shown in Circles