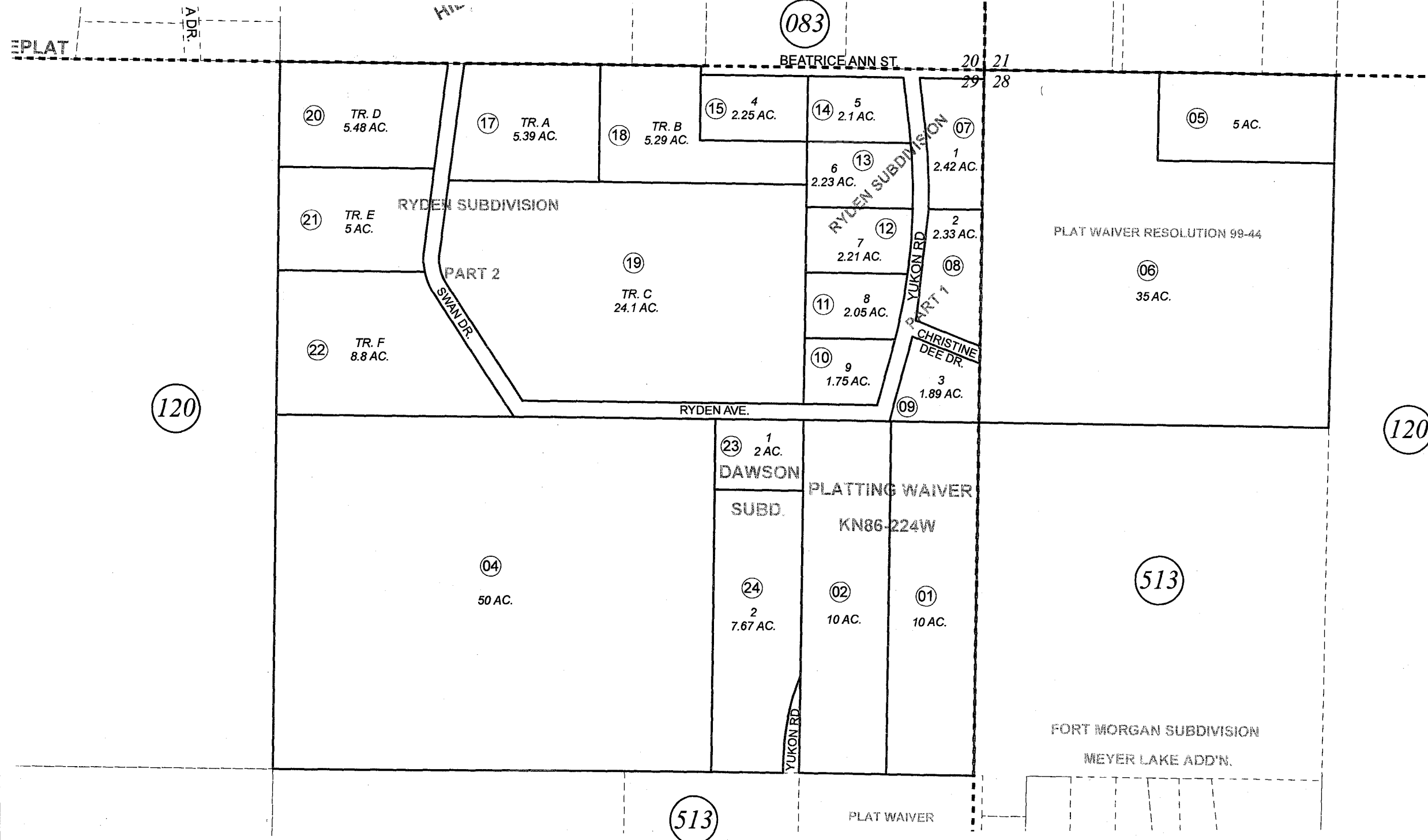


S 1/2 NE 1/4, SEC. 29 & NW 1/4 NW 1/4, SEC. 28, T03N, R11W, S.M.

133-512



AUGUST 29, 2008

For 2009 assessment roll		
Delete	Add	Revise
	To	
3	23,24	

Assessor's Map
Kenai Peninsula Borough

RYDEN SUB PART 1 KN0990091
RYDEN SUB PART 2 KN2008056
DAWSON SUB KN2008086

Note- Assessor's block Numbers Shown in Ellipses
Assessor's Parcel Numbers Shown in Circles

This map is prepared
for Kenai Peninsula
Borough Assessing Dept.
use only and is not
intended for conveyance
nor is it a survey.