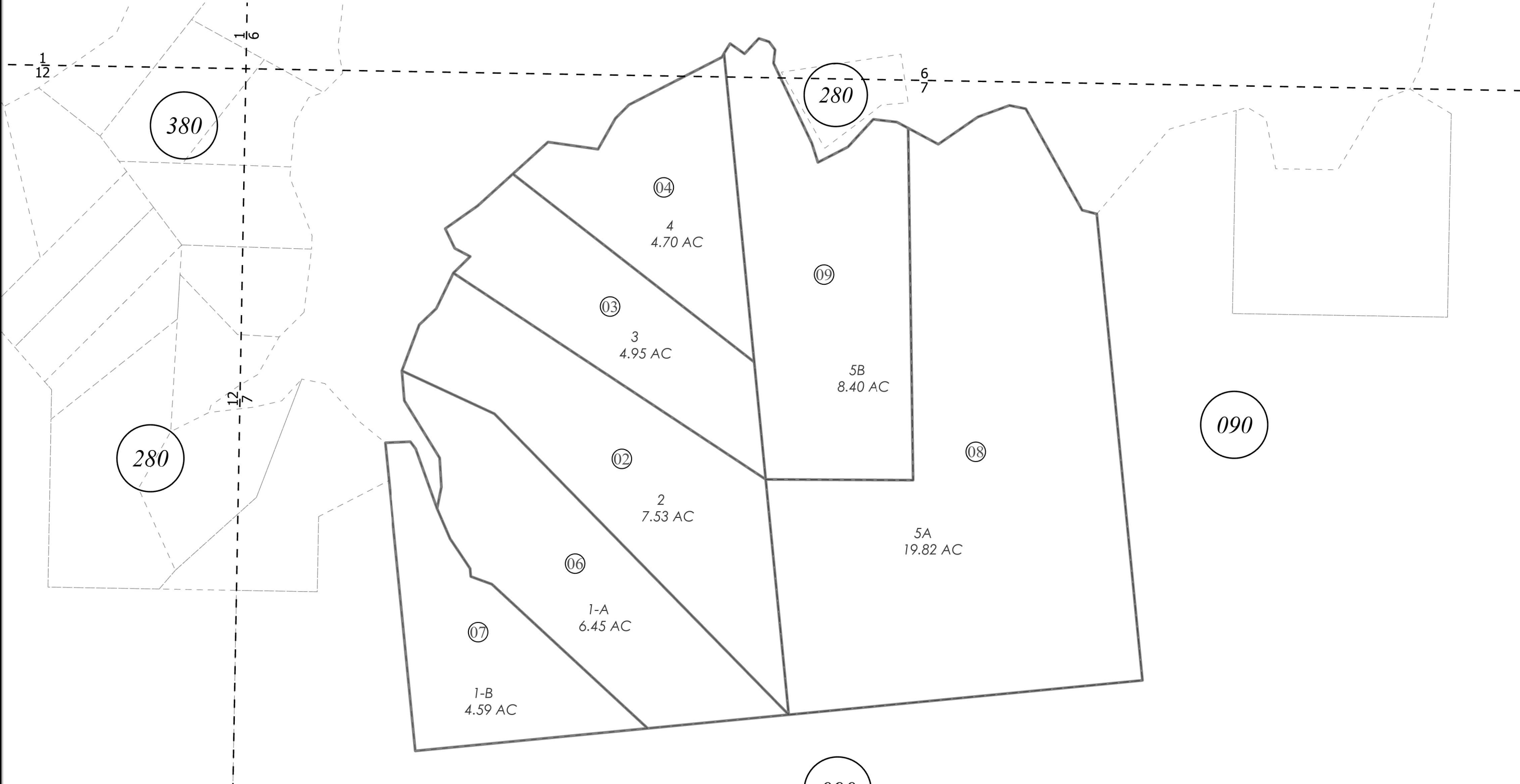


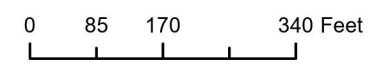
POR. SEC. 6 & 7, T07S, R11W, S.M.

193-281



MAY 23, 2024

For 2025 assessment roll		
Delete	Add	Revise
	To	
05	08-09	



Assessor's Map
Kenai Peninsula Borough

BROKEN AXLE SUB HM2006029
BROKEN AXLE SUB 2011 ADDN HM2011049
BROKEN AXLE NO 2 HM2024009

This map is prepared for Kenai Peninsula Borough Assessing Dept. use only and is not intended for conveyance nor is it a survey.
Note- Assessor's block Numbers Shown in Elipses
Assessor's Parcel Numbers Shown in Circles