

NW1/4 SEC. 5, T02N, R11W, S.M.

137-230

BK
133

BURNT NORTON
SUBDIVISION

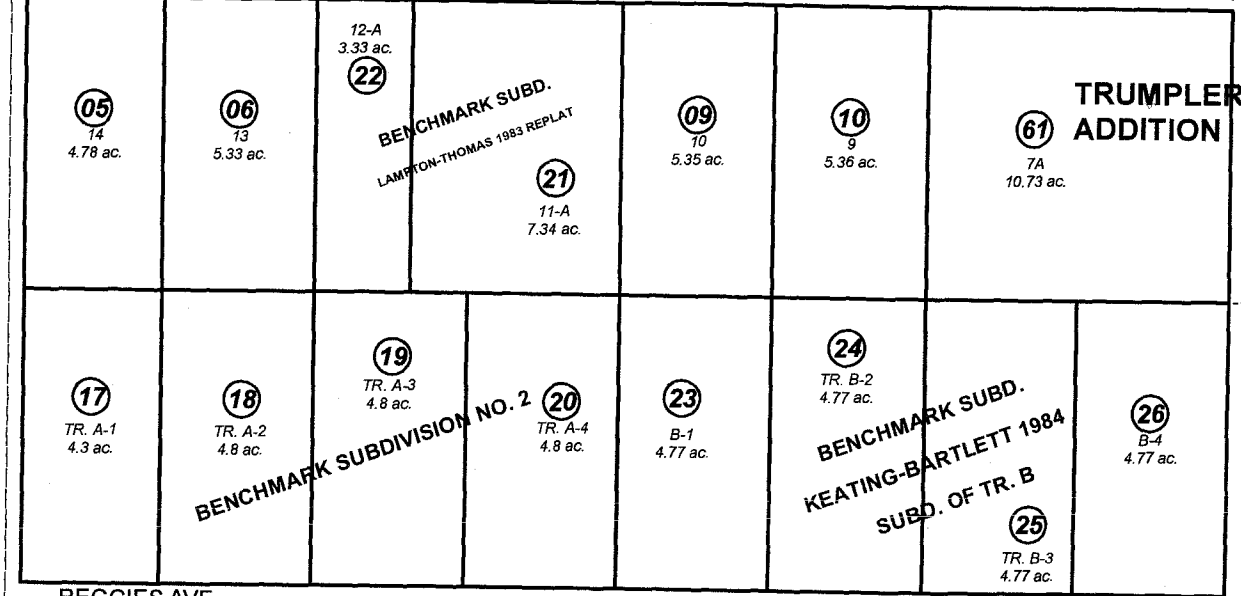
32

CABIN AVE.

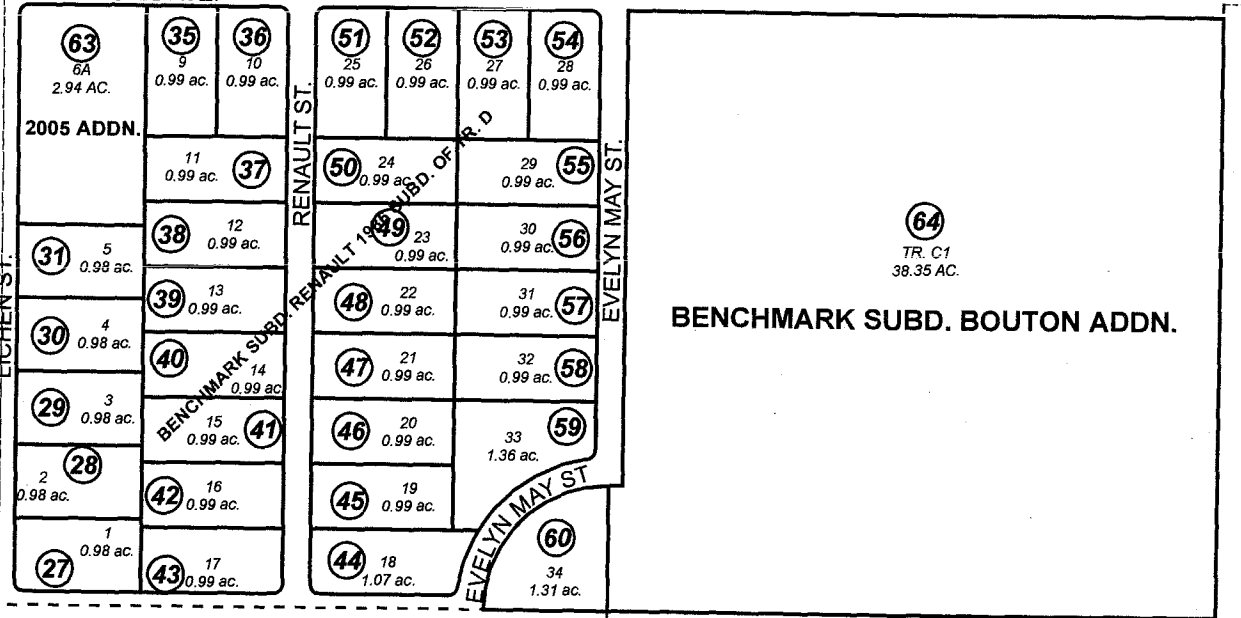
BULL MOOSE ST.

1" HOMESTEAD SUBDIVISION

030



REGGIES AVE.



FRIENDSHIP AVE.

030



JULY 16, 2007

For 2008 assessment roll		
Delete	Add	Revise
	To	
13-16	64	

Assessor's Map
Kenai Peninsula Borough

- BENCHMARK SUB KN0760002
- BENCHMARK RESUB TRACT C KN0780132
- BENCHMARK SUB NO 2 KN0830204
- BENCHMARK SUB LAMPTON-THOMAS 1983 REPLAT KN0840094
- BENCHMARK SUB KEATING BARTLETT 1984 SUB KN0840227
- BENCHMARK SUB RENAULT 1986 SUB OF KN0860122
- BENCHMARK SUB TRUMPLER ADDN KN2002048
- BENCHMARK SUB 2005 ADDN KN2005034
- BENCHMARK SUB BOUTON ADDN KN2007042

This map is prepared for Kenai Peninsula Borough Assessing Dept. use only and is not intended for conveyance nor is it a survey.

Note- Assessor's block Numbers Shown in Ellipses
Assessor's Parcel Numbers Shown in Circles