

POR. SEC. 11, T03N, R12W, S.M.

133-023

340

CHIESLAK SUBD.

MEYER SUBDIVISION

LARRY AVE

COHOE LOOP RD.

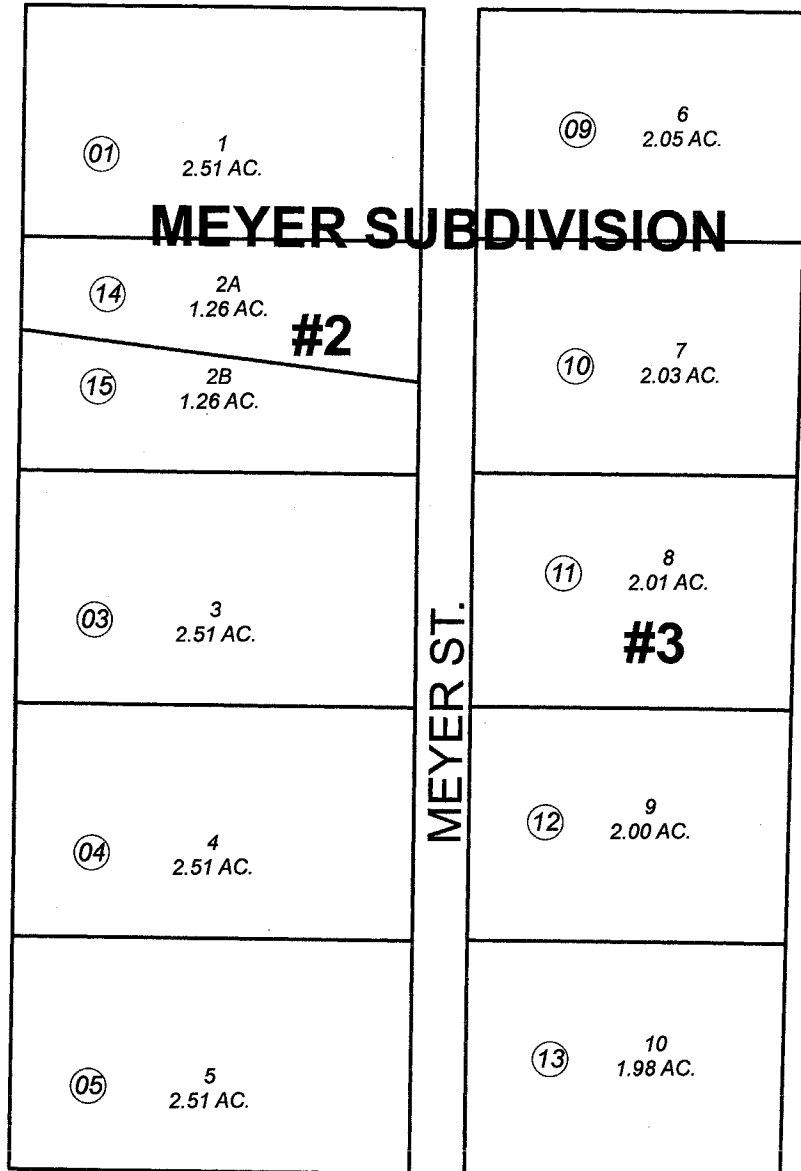
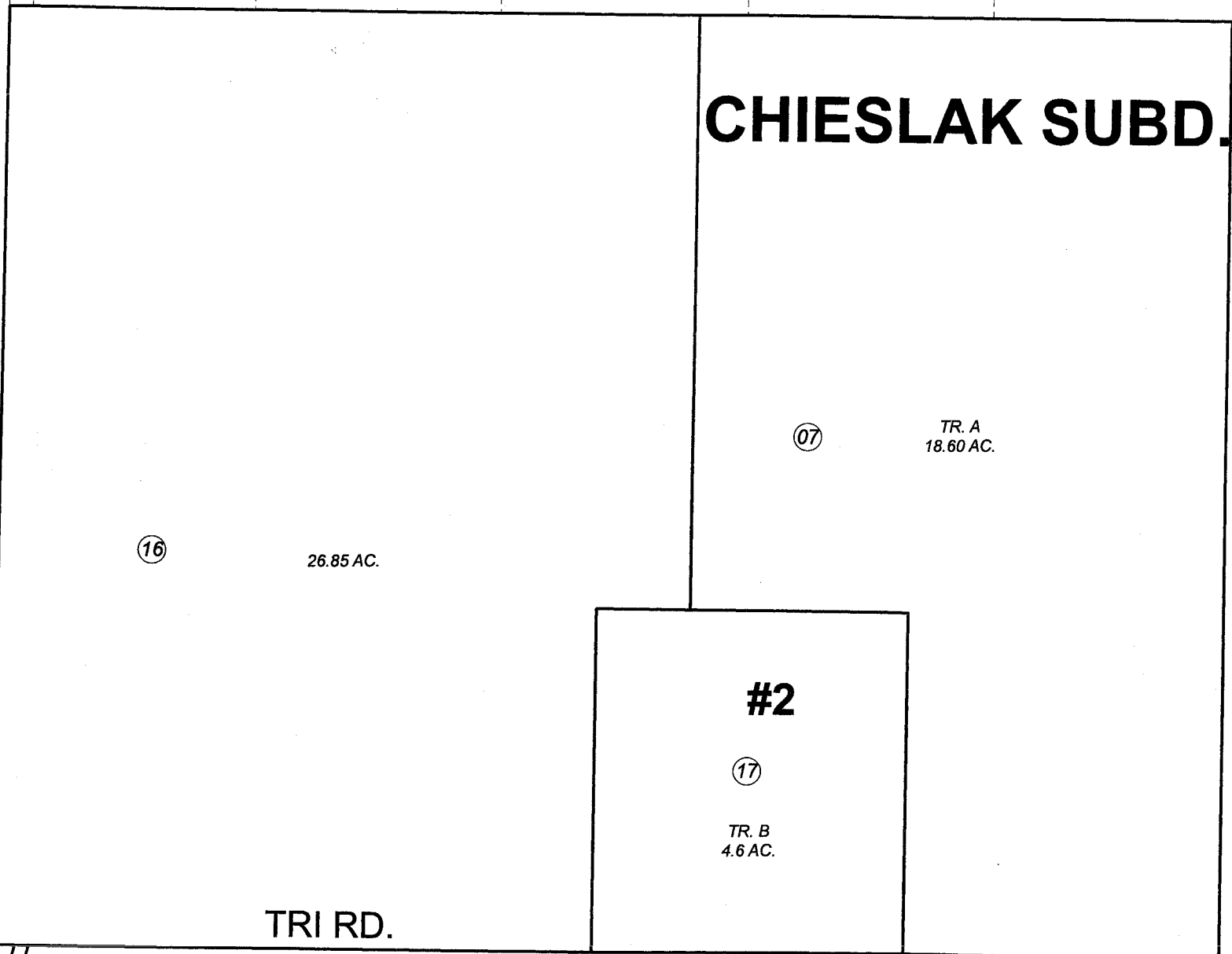
MEYER ST.

HERMANSEN DR. (FORMERLY TRI RD.)

530

020

075



10 11
14 15



JUNE 10, 2008

For 2009 assessment roll		
Delete	Add	Revise
	To	
8	16,17	

Assessor's Map
Kenai Peninsula Borough

MEYER SUB KN2000053
 CHIESLAK SUB KN2005051
 MEYER SUB #2 KN2006047
 MEYER SUB #3 KN2006048
 CHIESLAK SUB #2 KN2008003

R/W NAME CHANGED BY RES. SN89-04

This map is prepared for Kenai Peninsula Borough Assessing Dept. use only and is not intended for conveyance nor is it a survey.

Note- Assessor's block Numbers Shown in Elipses
 Assessor's Parcel Numbers Shown in Circles