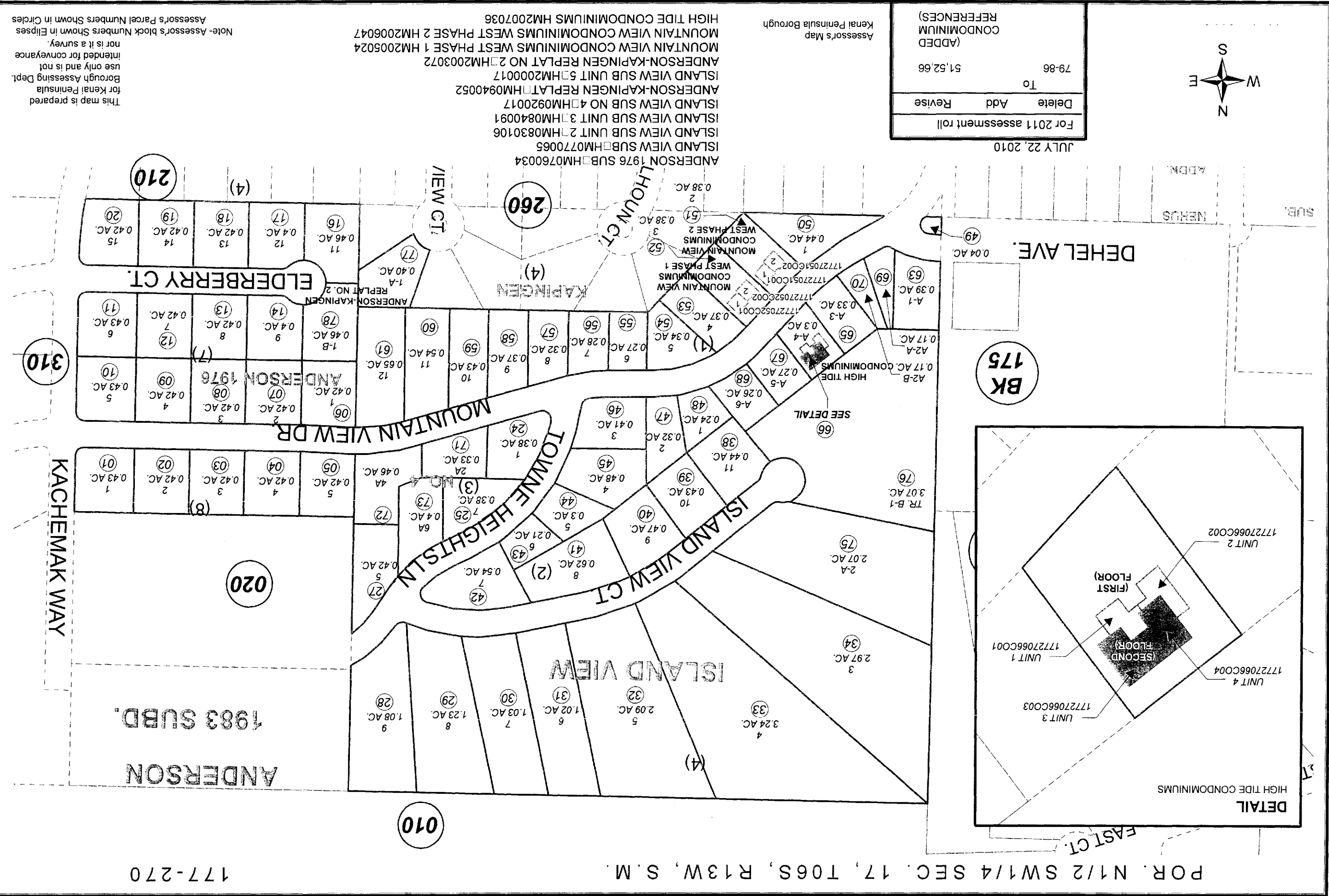


POR. N1/2 SW1/4 SEC. 17, T06S, R13W, S.M. 177-270



For 2011 assessment roll	
Delete	Add
Revise	
79-86	51,52,66
(ADDED) CONDOMINIUM	
REFERENCES)	



Assessor's Map
Kenai Peninsula Borough

ANDERSON 1976 SUBD. HM0760034
ISLAND VIEW SUB UNIT 2. HMM0830106
ISLAND VIEW SUB UNIT 3. HMM0840091
ISLAND VIEW SUB UNIT 4. HMM0920017
ANDERSON-KAPINGEN REPLAT. HMM0940052
ISLAND VIEW SUB UNIT 5. HMM2000017
ANDERSON-KAPINGEN REPLAT NO 2. HMM2003072
MOUNTAIN VIEW CONDOMINIUMS WEST PHASE 1 HM2005024
MOUNTAIN VIEW CONDOMINIUMS WEST PHASE 2 HM2006047
HIGH TIDE CONDOMINIUMS HM2007036

This map is prepared for Kenai Peninsula Borough Assessing Dept. use only and is not intended for conveyance nor is it a survey. Note- Assessor's block Numbers Shown in Ellipses and Assessor's Parcel Numbers Shown in Circles