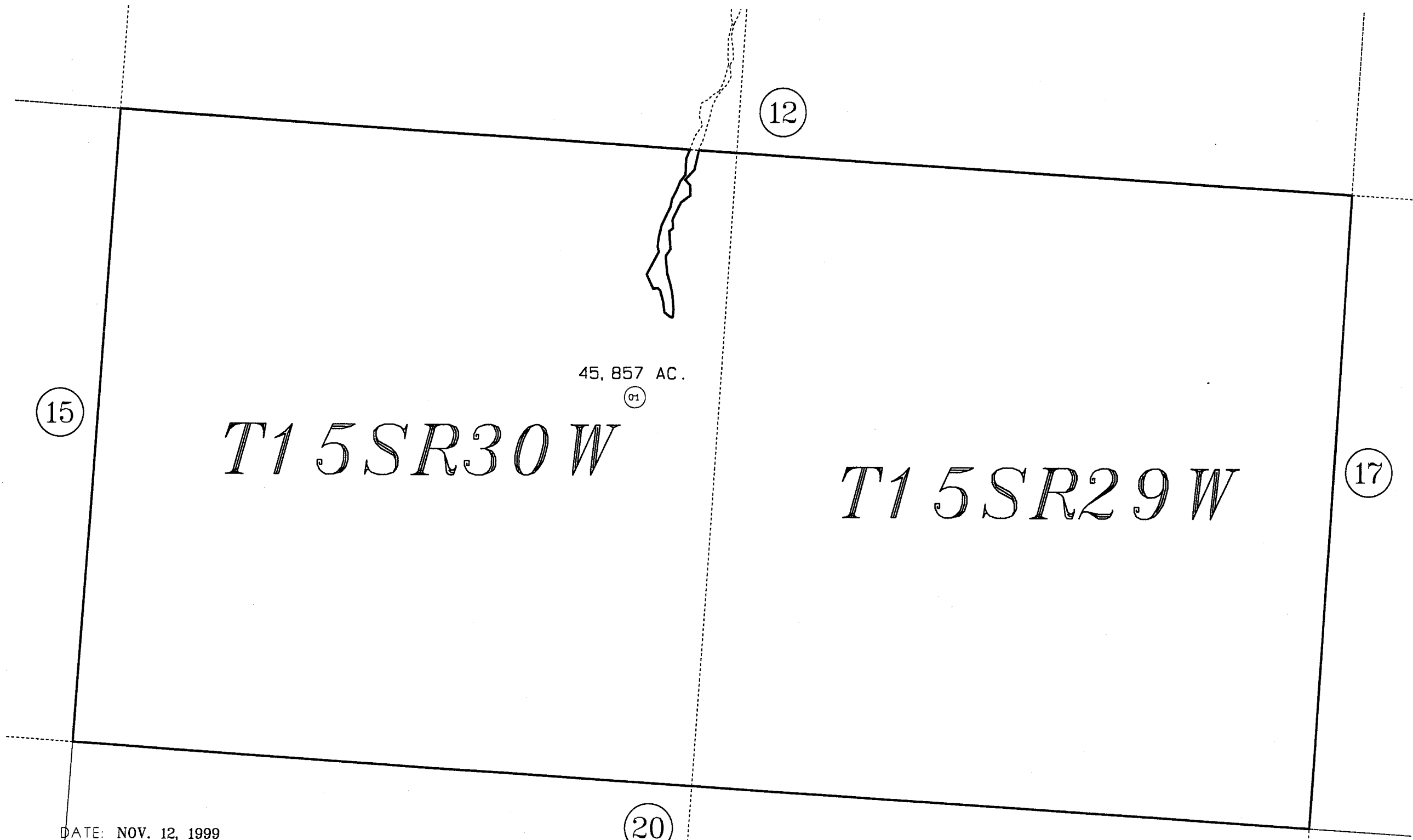


T15S, R29W, R30W, S.M.

241-160



15

12

45,857 AC.
01

T15SR30W

T15SR29W

17

20



DATE: NOV. 12, 1999
 FOR 2000 ASSESSMENT ROLL
 DELETE ADD REVISED
 TO
 NEW
 PAGE

Assessor's Map
 Kenai Peninsula Borough

THIS MAP IS PREPARED
 FOR KENAI PENINSULA
 BOROUGH ASSESSING DEPT.
 USE ONLY AND IS NOT
 INTENDED FOR CONVEYANCE.
 NOR IS IT A SURVEY

NOTE - Assessor's Block Numbers Shown In Ellipses
 Assessor's Parcel Numbers Shown In Circles