

S1/2 SEC. 17, T5S, R12W, SEWARD MERIDIAN

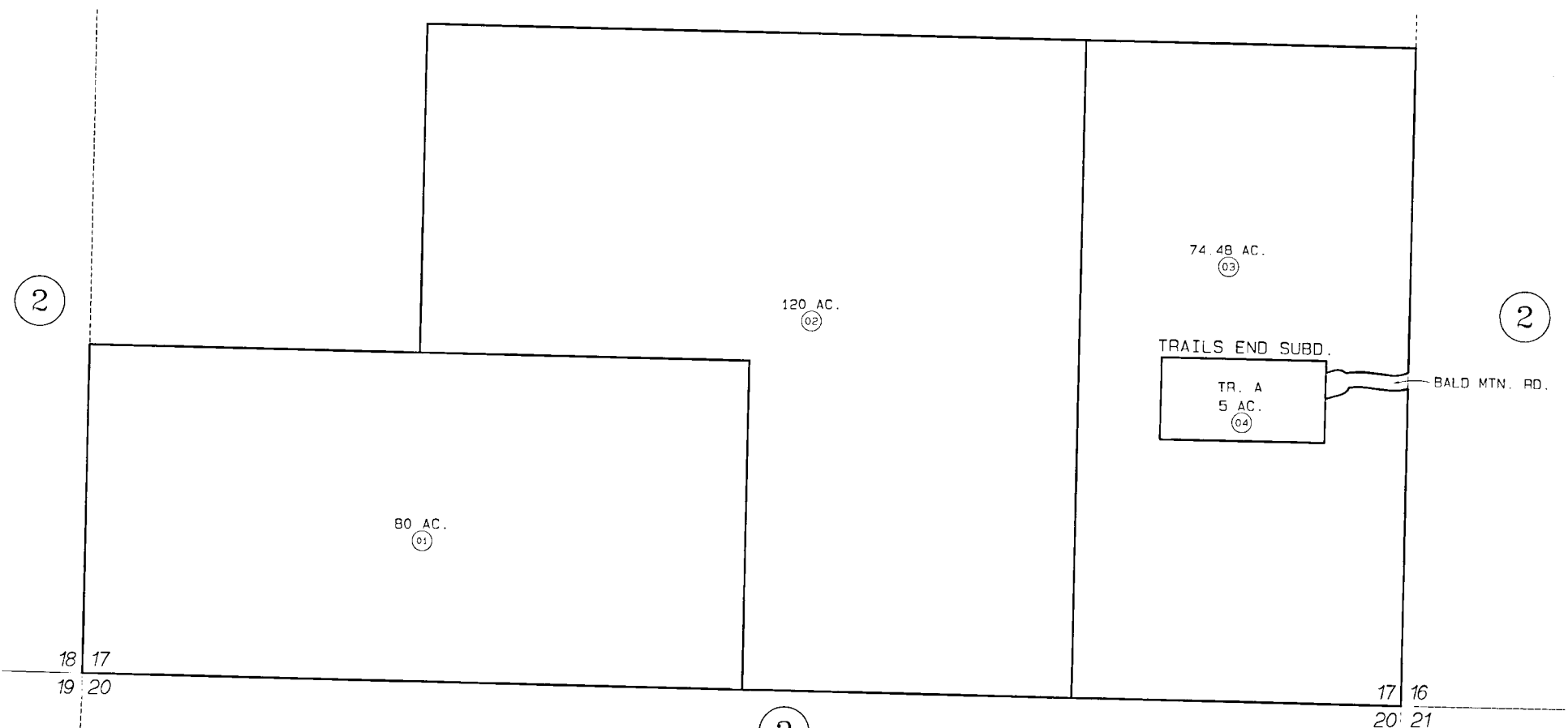
172-021

2

2

2

2



18 17  
19 20

17 16  
20 21



DATE: FEB. 10, 1997

FOR 1997 ASSESSMENT ROLL		
DELETE	ADD	REVISED
TO		3
(ACREAGER CHANGE)		

Assessor's Map  
Kenai Peninsula Borough

TRAILS END HM840074  
RECORD OF SURVEY WITHIN T5S R12W SEC. 17 HM960050RS

NOTE - Assessor's Block Numbers Shown In Ellipses  
Assessor's Parcel Numbers Shown In Circles

THIS MAP IS PREPARED  
FOR KENAI PENINSULA  
BOROUGH ASSESSING DEPT.  
USE ONLY AND IS NOT  
INTENDED FOR ANY  
OTHER USE OR REPRESENTATION