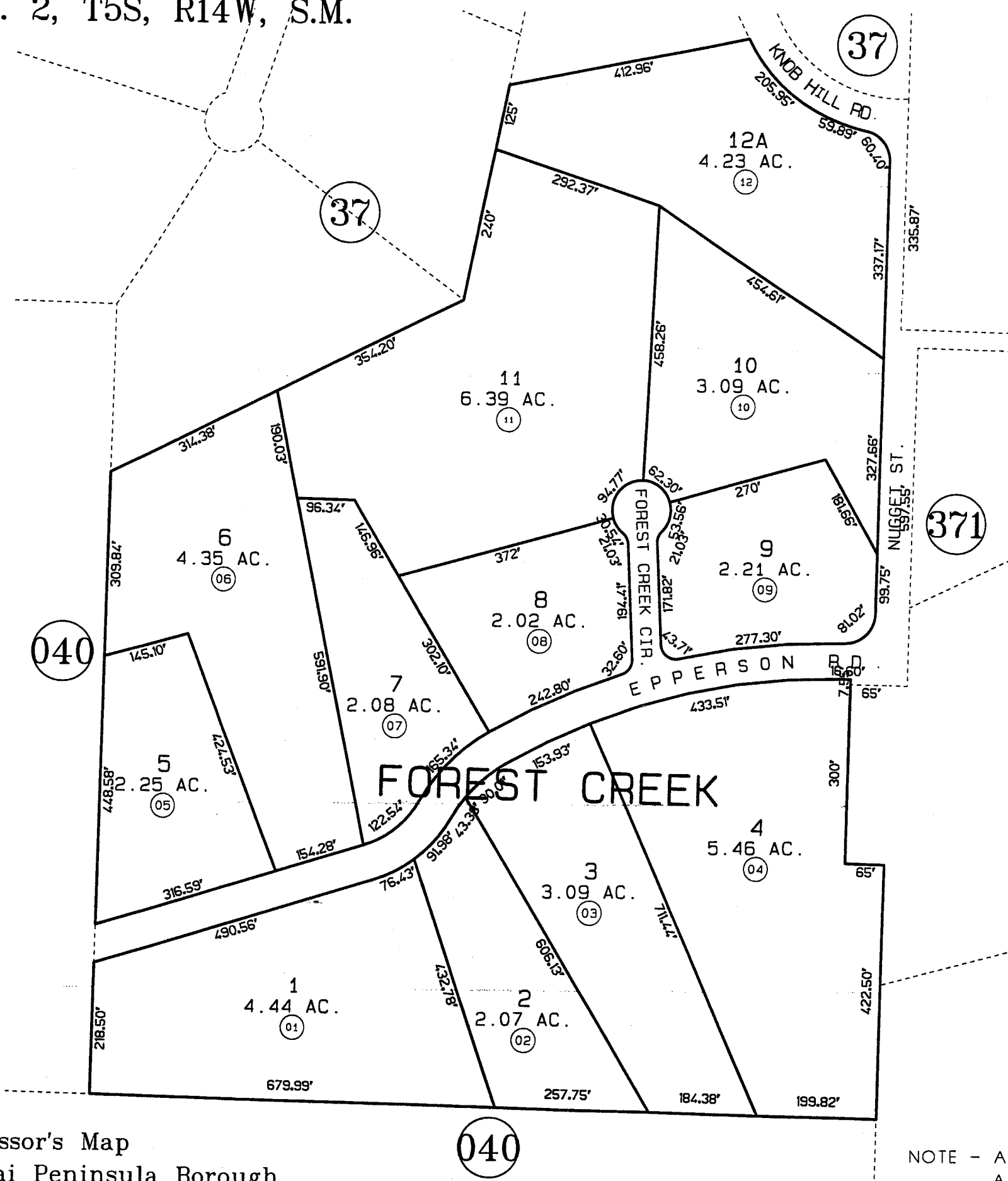


POR. W1/2 NE1/4 SEC. 2, T5S, R14W, S.M.

FOREST CREEK HM970035

171-372



DATE: DEC. 26, 1997

FOR 19 98 ASSESSMENT ROLL

DELETE	ADD	REVISED

TO NEW PAGE

Assessor's Map  
Kenai Peninsula Borough

THIS MAP IS PREPARED FOR KENAI PENINSULA BOROUGH ASSESSING DEPT. USE ONLY AND IS NOT INTENDED FOR ANY OTHER USE OR REPRESENTATION

NOTE - Assessor's Block Numbers Shown In Ellipses  
Assessor's Parcel Numbers Shown In Circles