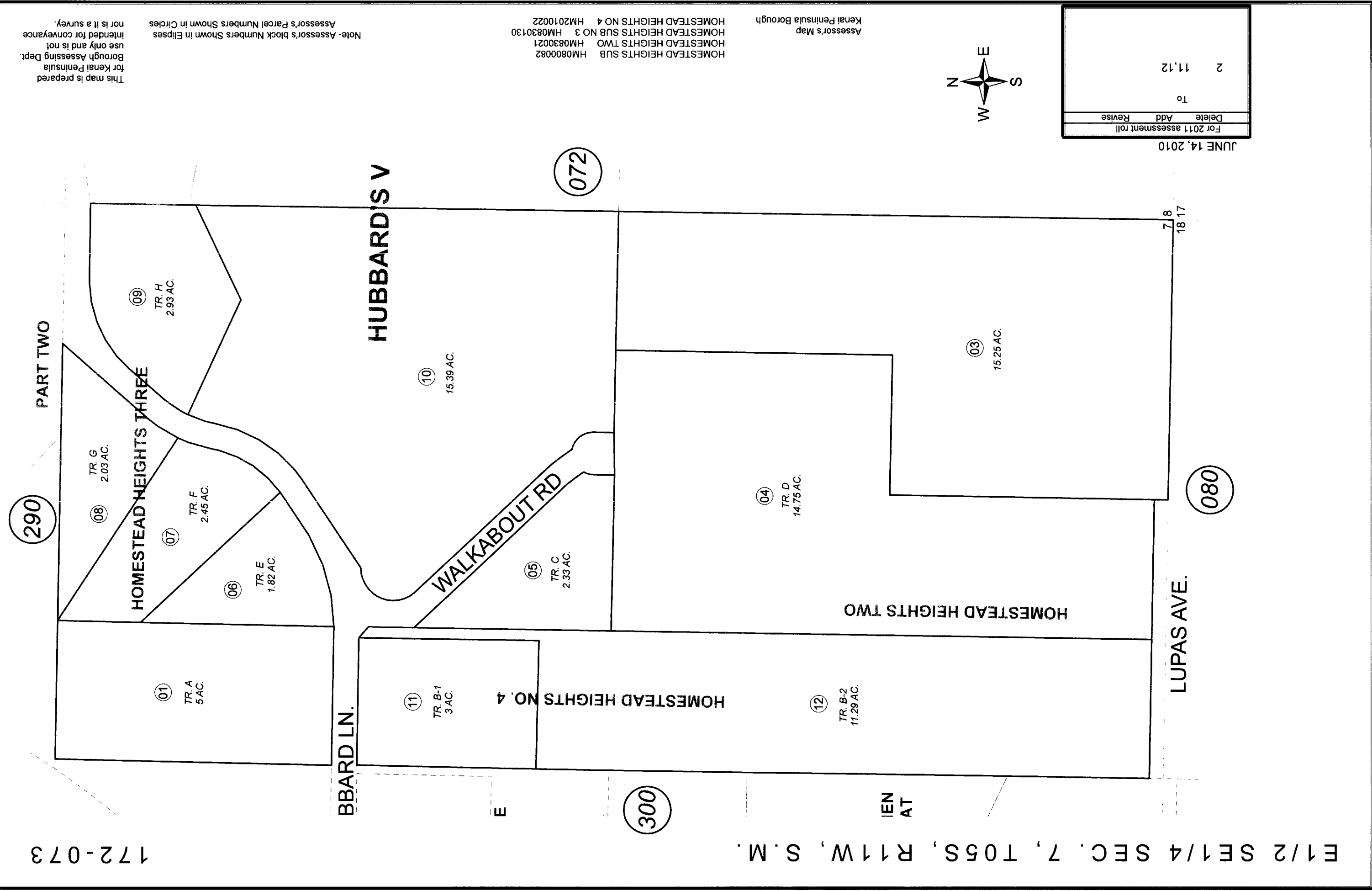


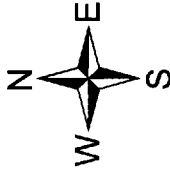
172-073

E 1/2 SE 1/4 SEC. 7, T05S, R11W, S.M.



For 2011 assessment roll	
Delete	Add
Revise	
To	2
11,12	

JUNE 14, 2010



Assessor's Map  
Kenai Peninsula Borough

HOMESTEAD HEIGHTS SUB HM0800082  
 HOMESTEAD HEIGHTS TWO HM0830021  
 HOMESTEAD HEIGHTS SUB NO 3 HM0830130  
 HOMESTEAD HEIGHTS NO 4 HM2010022

Note- Assessor's black Numbers Shown in Ellipses

This map is prepared for Kenai Peninsula Borough Assessing Dept. use only and is not intended for conveyance nor is it a survey.