

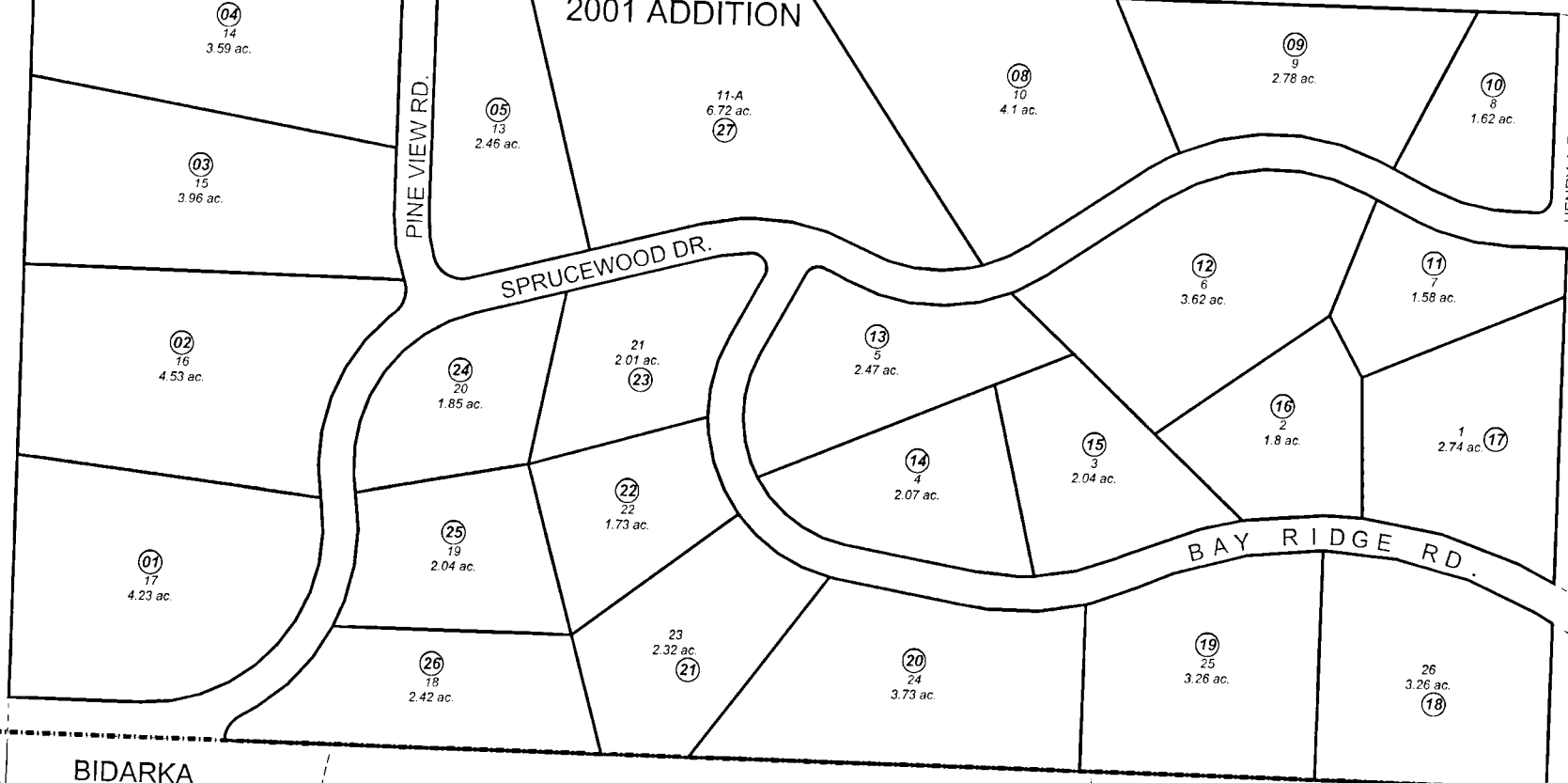
SE 1/4 NW 1/4 & SW 1/4 NE 1/4 SEC. 14, T06S, R14W, S.M.

173-720

# RAVEN RIDGE SUBDIVISION

160

## 2001 ADDITION



160

BK 175

BK 175



JANUARY 14, 2002

For 2007 assessment roll		
Delete	Add	Revisn
		To
6,7	27	

Assessor's Map  
Kenai Peninsula Borough

RAVEN RIDGE SUB HM0820009  
RAVEN RIDGE 2001 ADDN HM2001063

This map is prepared for Kenai Peninsula Borough Assessing Dept. use only and is not intended for conveyance nor is it a survey.

Note- Assessor's block Numbers Shown in Ellipses  
Assessor's Parcel Numbers Shown in Circles