

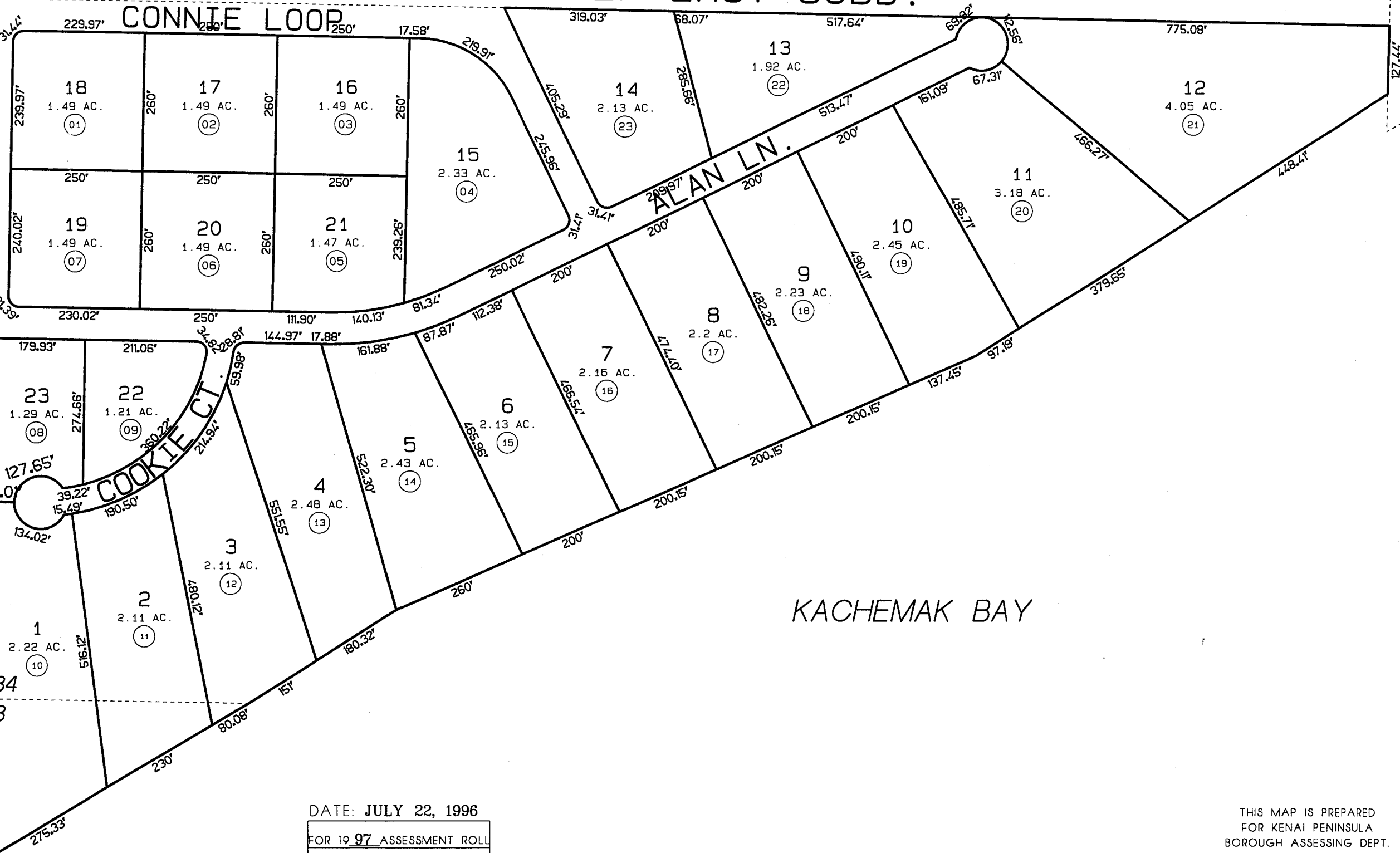
6

GOV'T. LOT 1 SEC. 3, T6S, R12W, SEWARD MERIDIAN
GOV'T. LOTS 3&4 SEC. 34, T5S, R12W, SEWARD MERIDIAN
STONESTEP EAST SUBD.

172-370

6

GREER RD.



3

33 34
4 3

KACHEMAK BAY

DATE: JULY 22, 1996

FOR 19 97 ASSESSMENT ROLL

DELETE	ADD	REVISED
--------	-----	---------

TO

REVISED
PAGE

Assessor's Map
Kenai Peninsula Borough STONESTEP EAST HM800055

THIS MAP IS PREPARED FOR KENAI PENINSULA BOROUGH ASSESSING DEPT. USE ONLY AND IS NOT INTENDED FOR ANY OTHER USE OR REPRESENTATION

NOTE - Assessor's Block Numbers Shown In Ellipses Assessor's Parcel Numbers Shown In Circles