

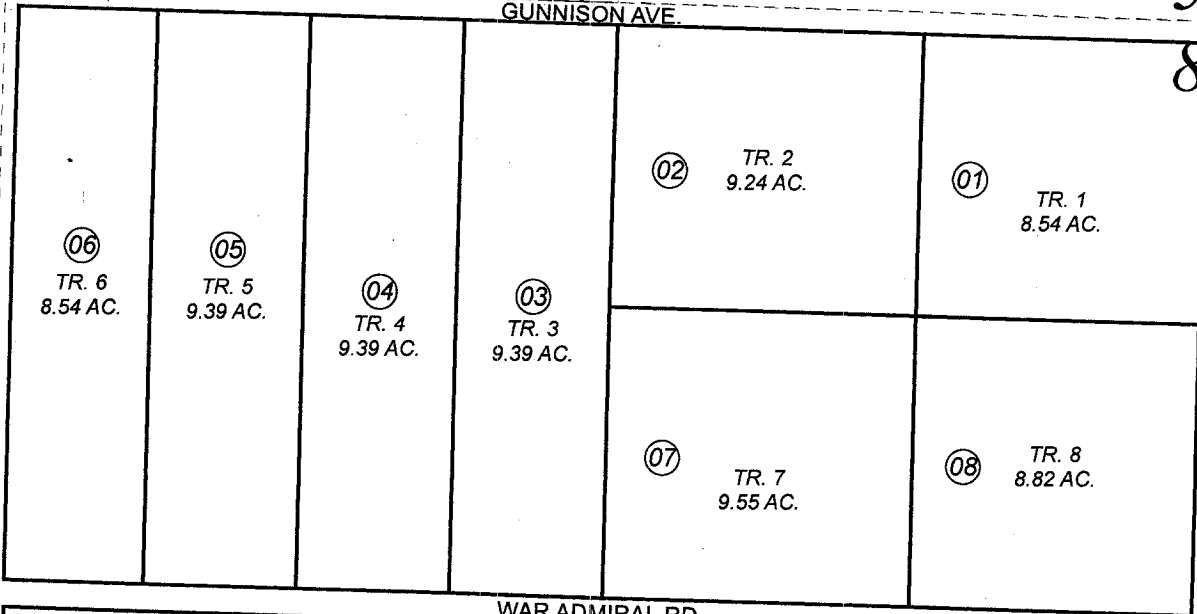
171-320

POR. SEC. 8, T05S, R14W, S.M.

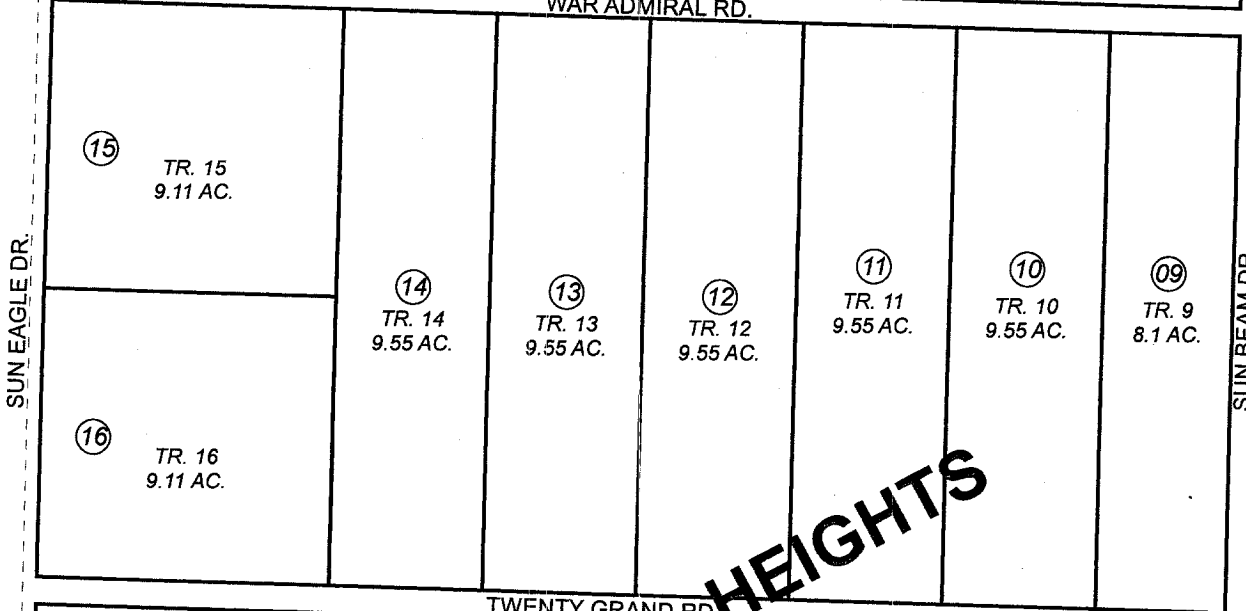
010

5
4
8
9

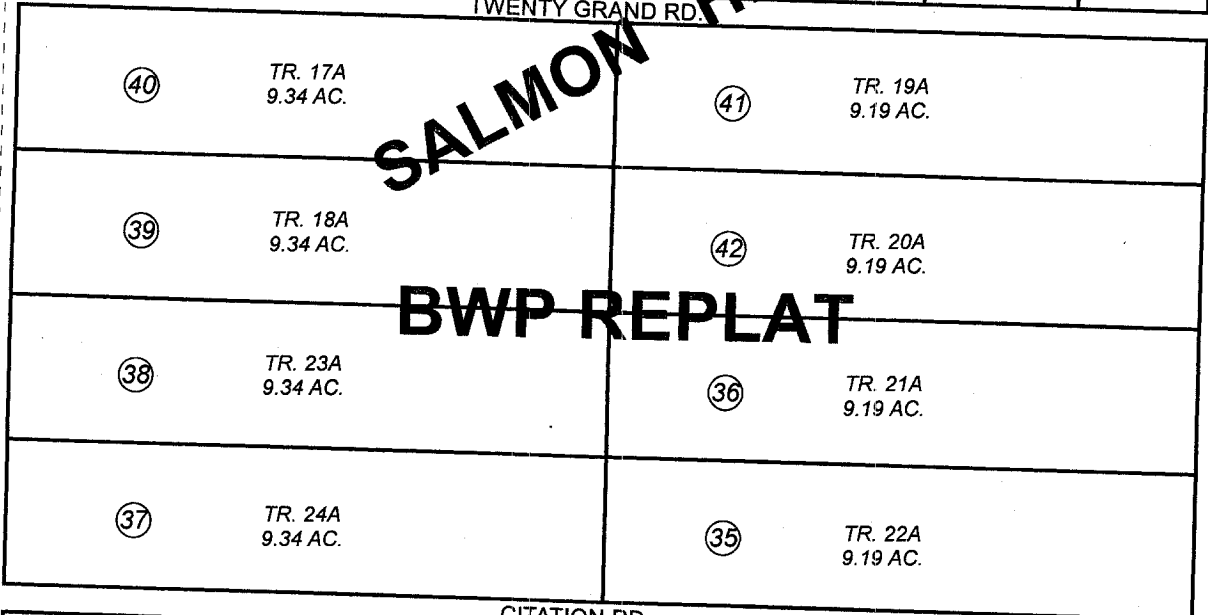
GUNNISON AVE.



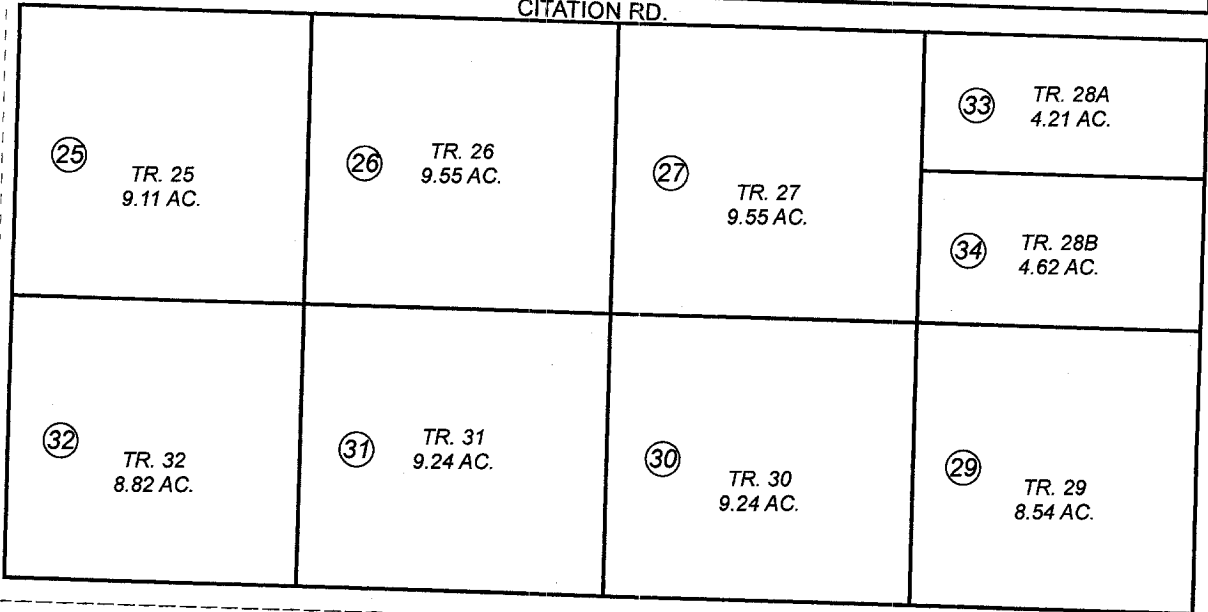
WAR ADMIRAL RD.



TWENTY GRAND RD.



CITATION RD.



ALUT AVE.

470

021

SALMON HEIGHTS
BWP REPLAT

This map is prepared for Kenai Peninsula Borough Assessing Dept. use only and is not intended for conveyance nor is it a survey.

Note- Assessor's block Numbers Shown in Ellipses Assessor's Parcel Numbers Shown in Circles

SALMON HEIGHTS SUB HM0742196
SALMON HEIGHTS SUB BWP REPLAT HM2007065

Assessor's Map
Kenai Peninsula Borough



AUGUST 10, 2007

For 2008 assessment roll	
Delete	Revise
To	
17-24	33-42
28	