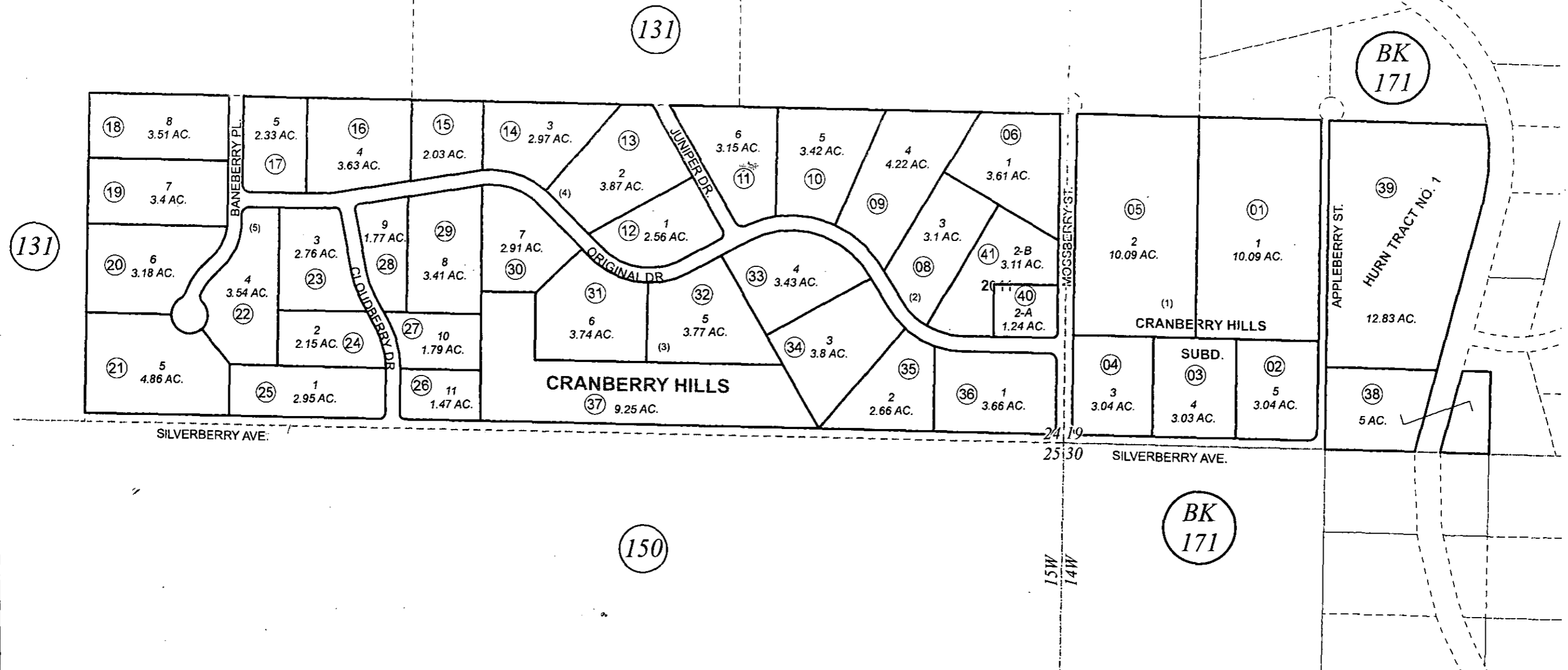


POR. S1/2 S1/2 SEC. 24, T05S, R15W, S.M.
 GOV'T LOT 4, SEC. 19, T05S, R14W, S.M.

169-210



0 125 250 500 Feet

DECEMBER 15, 2011

For 2012 assessment roll		
Delete	Add	Revise
To		
07	40,41	

Assessor's Map
 Kenai Peninsula Borough

CRANBERRY HILLS SUB HM0770058
 CRANBERRY HILLS 2011 HM2011047

This map is prepared for Kenai Peninsula Borough Assessing Dept. use only and is not intended for conveyance nor is it a survey.
 Note- Assessor's block Numbers Shown in Ellipses
 Assessor's Parcel Numbers Shown in Circles