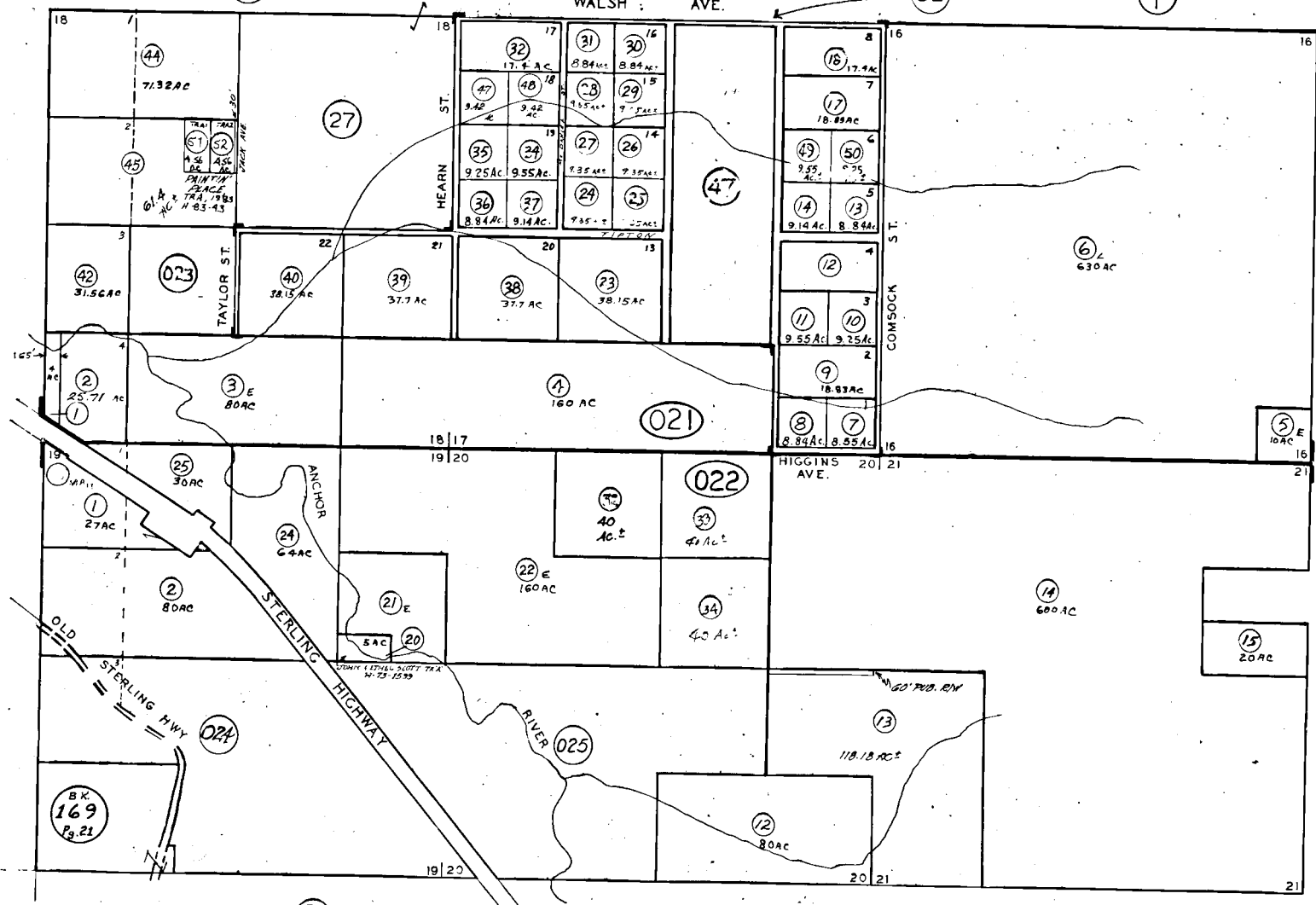


SEC. 16-21-T5S.-R.14 W.-S.B&M

WALSH AVE.



ANCHOR RIVER RANCHOS
H72-328 4-6-72

Kenai Peninsula Borough, Alaska

NOTE - Assessor's Block Numbers Shown in Ellipses
Assessor's Parcel Numbers Shown in Circles

BK 169

BK 169
Pg. 21

5

3

3