

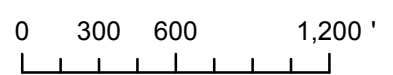
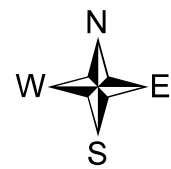
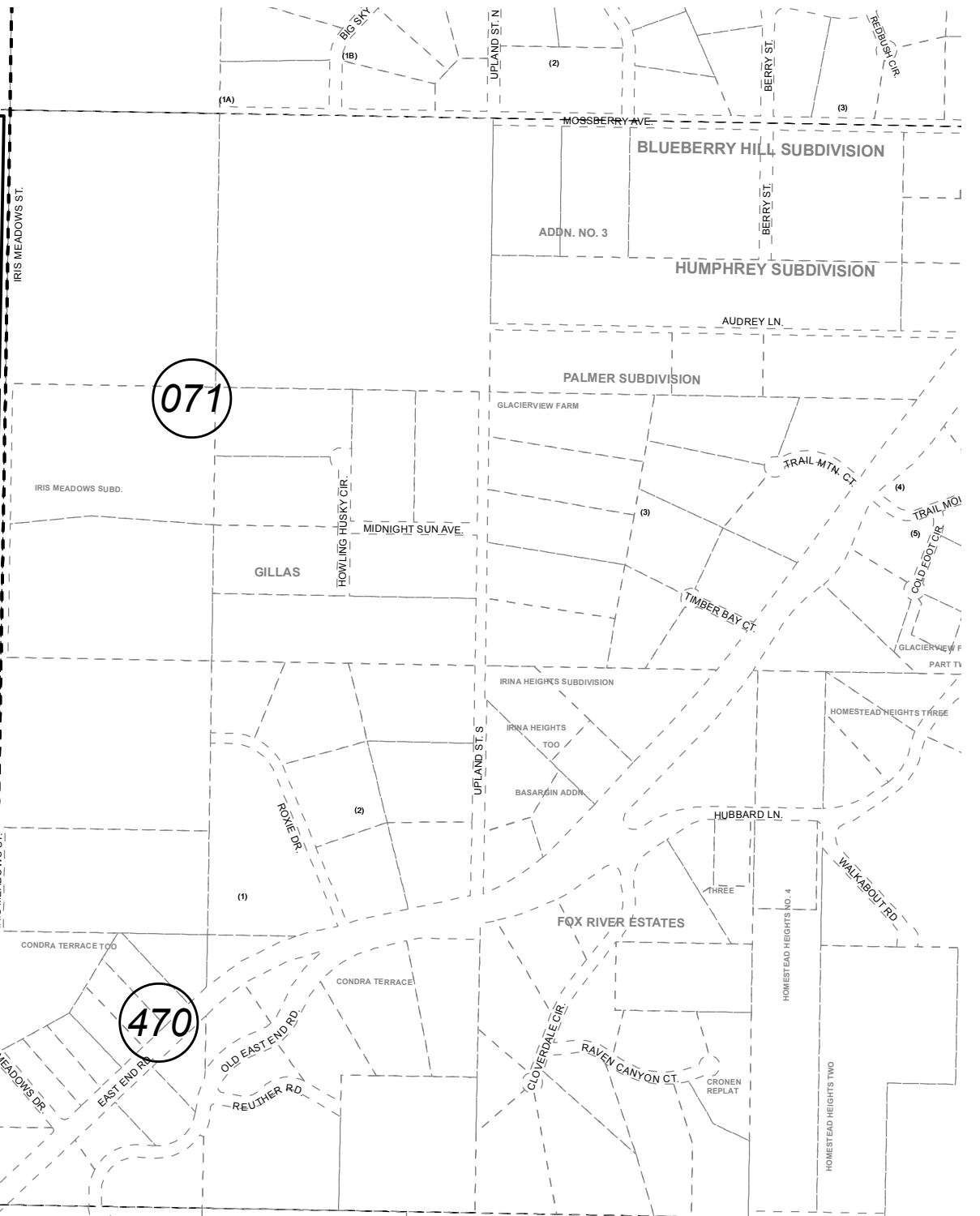
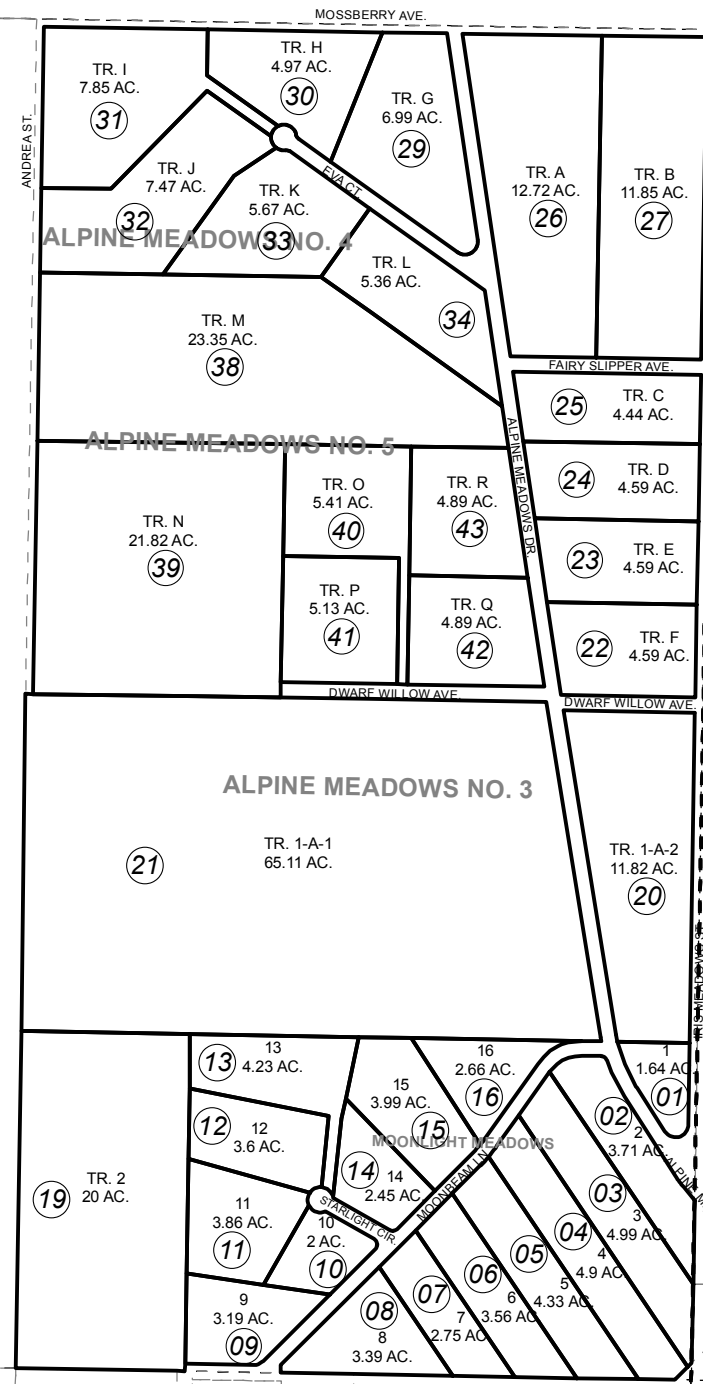
040

040

071

470

420



JUNE 22, 2016

For 2017 assessment roll		
Delete	Add	Revise
To		
ADDED AMENDED PLAT NOTE		

Assessor's Map
Kenai Peninsula Borough

- MOONLIGHT MEADOWS HM0990025
- ALPINE MEADOWS NO 2 HM2001030
- ALPINE MEADOWS NO 3 HM2005005
- ALPINE MEADOWS NO 4 HM2005051
- ALPINE MEADOWS NO 5 HM2005063
- MOONLIGHT MEADOWS AMENDED HM2016009

This map is prepared for Kenai Peninsula Borough Assessing Dept. use only and is not intended for conveyance nor is it a survey.

Note- Assessor's block Numbers Shown in Ellipses
Assessor's Parcel Numbers Shown in Circles