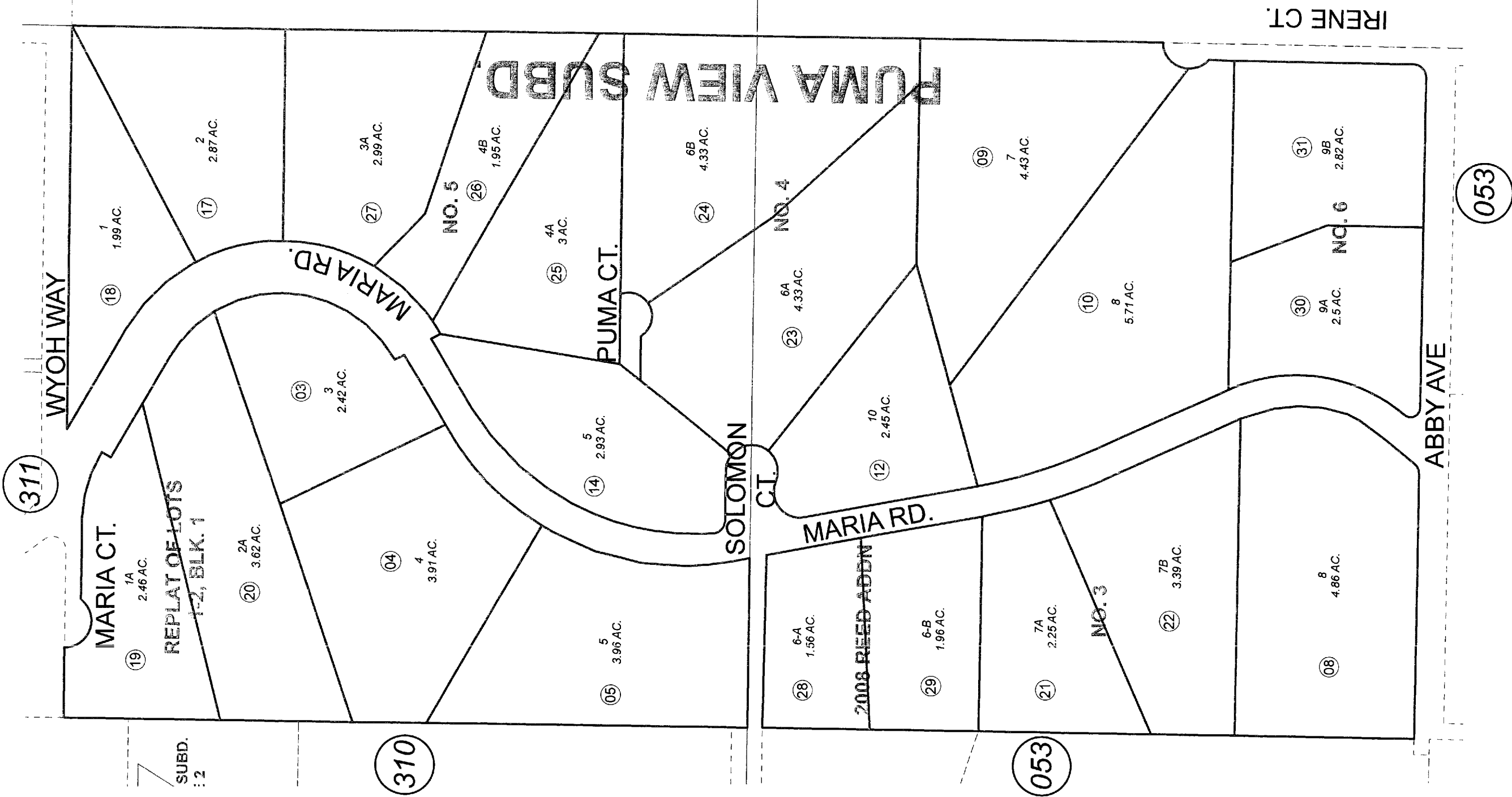
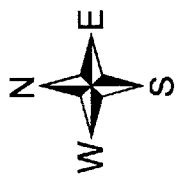


NE 1/4 NE 1/4 SEC. 24, SE 1/4 SE 1/4 SEC. 13, T05S, R12W, S.M. 172-180



Delete	
Add	Revise
For 2011 assessment roll	
OCTOBER 5, 2010	
To	11 30,31



Assessor's Map
Kenai Peninsula Borough

PUMA VIEW SUB HM0760085
 PUMA VIEW SUB REPLAT LOTS 1-2 BLK 1 HM0780041
 PUMA VIEW SUB NO 3 HM0850008
 PUMA VIEW SUB NO 4 HM0850127
 PUMA VIEW SUB NO 5 HM0870009
 PUMA VIEW SUB 2008 REED ADDN HM2008064
 PUMA VIEW SUB NO 6 HM2010043

Note - Assessor's block Numbers Shown in Ellipses
Assessor's Parcel Numbers Shown in Circles

This map is prepared for Kenai Peninsula Borough Assessing Dept. use only and is not intended for conveyance nor is it a survey.